



90° angular housing type KD-WG

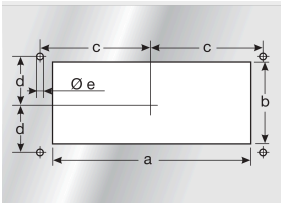
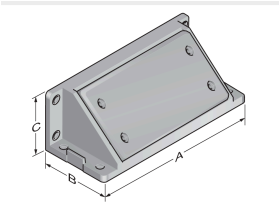


Product information

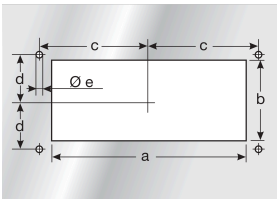
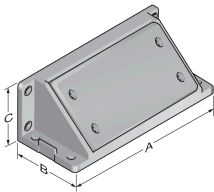
With the angular housing type KD-WG, cables can be inserted at a 90° angle to the control cabinet.
The angular housing can either be screwed on directly or attached without tools using the snap-on frame type AR 24.

- Suitable for all 24-pin variants of the KDL/E+, KDL/B, KDP/Z, KDP/N & KDP/X
- IP65
- Made in Germany

Information, conformities and approvals



Article	Order No.	Color	PU pcs.
KD-WG	87121176	Black	1



Article	Order No.	A mm	B mm	C mm	a mm	b mm	c mm	d mm	e mm
KD-WG	87121176	146	60	63	112	36	65	16	5.5

Classification



ETIM 9: EC002624 || eClass 14: 27182815 || UNSPSC: 39121312 ||

All details given in our sales brochures and catalogues, as well as the information available online, are based on our current knowledge of the products described. The electronic data and files made available by Murrplastik, particularly CAD files are based on our current knowledge of the product described. A legally binding assurance of certain properties or the suitability for a certain purpose can not be determined from this information. All information with respect to the chemical and physical properties of Murrplastik products, as well as application advice given verbally, in writing or by tests, is given to the best of our knowledge. They do not release the buyer from the obligation to carry out his own tests and trials in order to determine the concrete suitability of the products for the intended purpose. Murrplastik accepts no responsibility for the available information being up-to-date, correct or complete. Neither do we accept responsibility for the quality of this information. Murrplastik accepts no liability for damage caused as a result of using our products. Murrplastik reserves the right to make technical changes and improvements through constant further development of products and services. Our General Terms and Conditions apply.