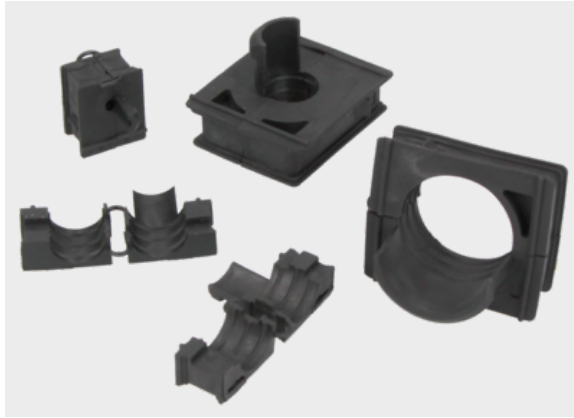




Cable entry grommet type KDT/ZE+



Product information

Cable entry grommet for pre-assembled cables in connection with cable entry system KDL/E+

- Approved for railway technology (except special grommets)
- The grommets are retrofitted around the cable.
- Strain relief even better with simple cable ties
- Thermal stability: -40 °C – +100 °C
- Fire classification: V0 (special grommets: HB)
- RoHS compliant
- UV resistant
- Made in Germany



Information, conformities and approvals



Article	Order No.	Diameter smallest / largest	for Ø mm	For opening small / large	No. of openings	Flexa-T old Conduit	PU pcs.
KDT/ZE 2xASI double grommet	87121280				2		10
BST KDT/ZE ASI	87121281						10
Grommet, small							
KDT/ZE+ 02 1)	87121308	2 / 3	2 - 3	yes / no	1		10
KDT/ZE+ 03	87121310	3 / 4	3 - 4	yes / no	1		10
KDT/ZE+ 04	87121312	4 / 5	4 - 5	yes / no	1		10
KDT/ZE+ 05	87121314	5 / 6	5 - 6	yes / no	1		10
KDT/ZE+ 06	87121316	6 / 7	6 - 7	yes / no	1		10
KDT/ZE+ 07	87121318	7 / 8	7 - 8	yes / no	1		10
KDT/ZE+ 08	87121320	8 / 9	8 - 9	yes / no	1		10
KDT/ZE+ 09	87121322	9 / 10	9 - 10	yes / no	1		10
KDT/ZE+ 10	87121324	10 / 11	10 - 11	yes / no	1		10
KDT/ZE+ 11	87121326	11 / 12	11 - 12	yes / no	1		10
KDT/ZE+ 12	87121328	12 / 13	12 - 13	yes / no	1		10



Cable entry grommet type KDT/ZE+

Article	Order No.	Diameter smallest / largest	for Ø mm	For opening small / large	No. of openings	Flexa-T old Conduit	PU pcs.
KDT/ZE+ 13	87121330	13 / 14	13 - 14	yes / no	1		10
KDT/ZE+ 14	87121332	14 / 15	14 - 15	yes / no	1		10
KDT/ZE+ 15	87121334	15 / 16	15 - 16	yes / no	1		10
Grommet, large							
KDT/ZE+ 16	87121336	16 / 17	16 - 17	no / yes	1		10
KDT/ZE+ 17	87121338	17 / 18	17 - 18	no / yes	1		10
KDT/ZE+ 18	87121340	18 / 19	18 - 19	no / yes	1		10
KDT/ZE+ 19	87121342	19 / 20	19 - 20	no / yes	1		10
KDT/ZE+ 20	87121344	20 / 21	20 - 21	no / yes	1		10
KDT/ZE+ 21	87121346	21 / 22	21 - 22	no / yes	1		10
KDT/ZE+ 22	87121348	22 / 23	22 - 23	no / yes	1		10
KDT/ZE+ 23	87121350	23 / 24	23 - 24	no / yes	1		10
KDT/ZE+ 24	87121352	24 / 25	24 - 25	no / yes	1		10
KDT/ZE+ 25	87121354	25 / 26	25 - 26	no / yes	1		10
KDT/ZE+ 26	87121356	26 / 27	26 - 27	no / yes	1		10
KDT/ZE+ 27	87121358	27 / 28	27 - 28	no / yes	1		10
KDT/ZE+ 28	87121360	28 / 29	28 - 29	no / yes	1		10
KDT/ZE+ 29	87121362	29 / 30	29 - 30	no / yes	1		10
KDT/ZE+ 30	87121364	30 / 31	30 - 31	no / yes	1		10
KDT/ZE+ 31 1)	87121366	31 / 32	31 - 32	no / yes	1		10
Variable cable grommet (Protection class IP 42)							
KDT/VE 3-7	87121272		3 - 7	yes / no	1		10
KDT/VE 7-10	87121274		7 - 10	yes / no	1		10
Multi-line grommet 2-line							
KDT/ZE 2x4 double grommet 2)	87121284		4	yes / no	2		10



Cable entry grommet type KDT/ZE+

Article	Order No.	Diameter smallest / largest	for Ø mm	For opening small / large	No. of openings	Flexa-T old Conduit	PU pcs.
KDT/ZE 2x5 double grommet 2)	87121286		5	yes / no	2		10
KDT/ZE 2x6 double grommet 2)	87121288		6	yes / no	2		10
KDT/ZE 2x7 double grommet 2)	87121290		7	yes / no	2		10
KDT/ZE 2x8 double grommet 2)	87121291		8	yes / no	2		10
Dummy grommet							
BTK/E+ Dummy grommet small 1)	87121380	/		yes / no	0		10
BTK/E+ dummy grommet large 1)	87121370	/		no / yes	0		10
BTK/E	87121266			yes / no	0		10
Multi-line grommet 4-line							
KDT/ZE 4x2 quadruple grommet 2)	87121292		2	yes / no	4		10
KDT/ZE 4x3 quadruple grommet 2)	87121293		3	yes / no	4		10
KDT/ZE 4x4 quadruple grommet 2)	87121294		4	yes / no	4		10
KDT/ZE 4x5 quadruple grommet 2)	87121295		5	yes / no	4		10
KDT/ZE 4x6 quadruple grommet 2)	87121296		6	yes / no	4		10
Multiple grommet - only for cables without connectors							
KDT/ZE+ flex 03-13	87121372	3 / 13	3 - 13	yes / no	1		4
KDT/ZE+ flex 13-30	87121374	13 / 30	13 - 30	no / yes	1		4
Conduit grommet							
SDT/ZE 07	87174250			yes / no	1	M10/P07	10
SDT/ZE 09	87174252			yes / no	1	M12/P09	10
SDT/ZE 11	87174254			yes / no	1	M16/P11	10
SDT/ZE 16	87174256			no / yes	1	M20/P16	10
SDT/ZE 21	87174258			no / yes	1	M25/P21	10



Cable entry grommet type KDT/ZE+

Article	Order No.	Diameter smallest / largest	for Ø mm	For opening small / large	No. of openings	Flexa-T old Conduit	PU pcs.
Plug grommet (compatible with Murrelektronik, Balluff and ifm)							
KDT/ZE+ M8 1)	87121384	/		yes / no	1		10
KDT/ZE+ M12 1)	87121382	/		yes / no	1		10
ASI grommet (for ASI cable)							
KDT/ZE ASI	87121282			yes / no	1		10
Adapter grommet (adapter for small grommet)							
ATG/E	87121268			no / yes	1		10
1) no UR-approval 2) Unused openings can be closed off with type BSP dummy plugs							
1) no UR-approval 2) Unused openings can be closed off with type BSP dummy plugs							

Material properties



Thermoplastic elastomer (TPE)

Thermal properties



Temperature / temperature range
-40 °C - 100 °C

Protection class



Protection class
IP65

Fire properties



Fire classification
acc. to UL94: V0



Fire properties as per EN 45545-2
C.I.T. R22 / R23 :HL3
Ds (max.) R22 / R23 :HL3
LOI R22 / R23 :HL3



Cable entry grommet type KDT/ZE+

Technical information



Halogen-free



LABS free



According to ISO 4892-2

Conformity



RoHS (EC Directive 2011/65/EU)

Approvals and operating permits



EU railway approval



CSA approval



ECOLAB approval



UL Type 12



cURus approval

General information



Made in Germany