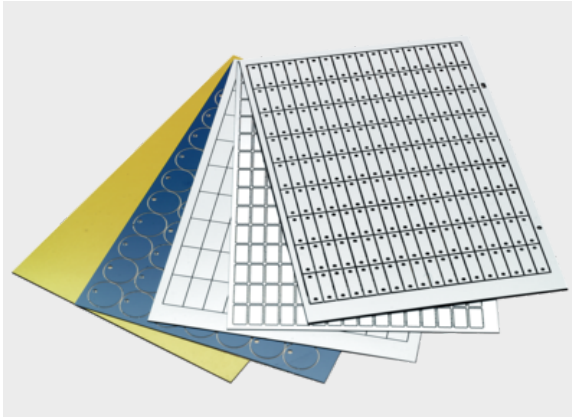


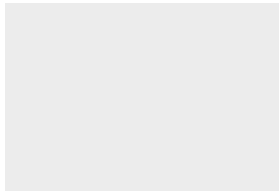
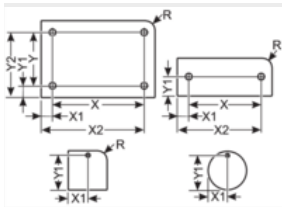
DM Rectangular without radius, 2x hole



Product information

- Duomatt is a double-layer material with an UV resistant colored outer layer for marking with a Murrplastik engraving or plotter system.
- Available in various color combinations
- Three different carrier materials available
- Different geometries and holes
- UV resistant outer layer
- Material thickness 0.8 mm or 1.5 mm
- Other sizes available on request

Information, conformities and approvals



Article	Order No.	Color	Label size mm	Number x Holes mm	Material thickness mm	Quantity per mat	Min. order quantity	Software Article	PU pcs.
Without corner radius; with adhesive foil									
DM 100x20 HF, 2x3.75MM 1)	8601226059	White / Black	100 x 20	2x 3.75	1.5	18		D97	18
DM 100x35 HF, 2x4.0MM 1)	8601226076	Black / White	100 x 35	2x 4.0	1.5	10		L83	10
DM 100x50 HF, 2x2.6MM 1)	8601226037	Yellow / Black	100 x 50	2x 2.6	1.5	6		2U	6
DM 105x52 HF, 2x6.0MM 1)	8601226048	Siemens silver / Black	105 x 52	2x 6.0	0.8	6		A44	6
DM 10x20 HF, 2x4.0MM 1)	8601226044	White / Black	10 x 20	2x 4.0	0.8	243		7C	243
DM 10x45 HF, 2x2.5MM 1)	8601226023	Silver / Black	10 x 45	2x 2.5	1.5	112		138	112
DM 10x45 HF, 2x3.0MM 1)	8601226045	White / Black	10 x 45	2x 3.0	0.8	112		9C	112
DM 110x10 HF, 2x3.5MM 1)	8601226047	Gray / White	110 x 10	2x 3.5	1.5	34		A24	34
DM 110x10 HF, 2x3.5MM 1)	8601226046	Orange / White	110 x 10	2x 3.5	1.5	34		A23	34
DM 110x30 HF, 2x3.5MM 1)	8601220127	Yellow / Black	110 x 30	2x 3.5	1.5	12		9S	12
DM 12x34 HF, 2x3.5MM	8601226016	White / Black	12 x 34	2x 3.5	0.8	115		528	115



DM Rectangular without radius, 2x hole

Article	Order No.	Color	Label size mm	Number x Holes mm	Material thickness mm	Quantity per mat	Min. order quantity	Software Article	PU pcs.
1) DM 12x90 HF, 2x3MM	8601226083	Black / White	12 x 90	2x 3.0	1.5	46		M93	46
1) DM 144x42 HF, 2x6.8MM	8601226034	White / Black	144 x 42	2x 6.8	1.5	8		IT	8
1) DM 14x45 HF, 2x3.0MM	8601226004	White / Black	14 x 45	2x 3.0	0.8	80		635	80
1) DM 15x45 HF, 2x3.5MM	8601226019	Black / White	15 x 45	2x 3.5	0.8	72		G21	72
1) DM 15x60 HF, 2x2.6MM	8601226027	Siemens silver / Black	15 x 60	2x 2.6	1.5	57		662	54
1) DM 17x20 HF, 2x2.5MM	8601226072	Siemens silver / Black	17 x 20	2x 2.5	0.8	144		K74	144
1) DM 18x62 HF, 2x6.8MM	8601226033	White / Black	18 x 62	2x 6.8	1.5	45		IU	45
1) DM 20x42 HF, 2x3.0MM	8601226013	White / Black	20 x 42	2x 3.0	1.5	56		378	56
1) DM 20x60 HF, 2x2.2MM	8601226081	Black / White	20 x 60	2x 2.2	0.8	42		M85	42
1) DM 20x60 HF, 2x2.5MM	8601226061	Siemens silver / Black	20 x 60	2x 2.5	1.5	42		H96	42
1) DM 20x60 HF, 2x3.5MM	8601226038	Bright blue / White	20 x 60	2x 3.5	1.5	42		3S	42
1) DM 20x60 HF, 2x3.5MM	8601226020	Black / White	20 x 60	2x 3.5	0.8	42		G20	42
1) DM 20x60 HF, 2x3.5MM	8601226071	White / Black	20 x 60	2x 3.5	1.5	42		J65	42
1) DM 20x80 HF, 2x3.0MM	8601226084	Black / White	20 x 80	2x 3.0	1.5	28		A7A	28
1) DM 20x80 HF, 2x3.0MM	8601226007	Silver / Black	20 x 80	2x 3.0	1.5	28		989	28
1) DM 210x40 HF, 2x3.5MM	8601226068	White / Red	210 x 40	2x 3.5	1.5	4		J62	4
1) DM 210x52 HF, 2x6.0MM	8601226051	Siemens silver / Black	210 x 52	2x 6.0	0.8	3		A47	3
1) DM 22x60 HF, 2x6.0MM	8601226078	White / Black	22 x 60	2x 6.0	1.5	39		L88	39
1) DM 25x45 HF, 2x4.2MM	8601226032	Siemens silver / Black	25 x 45	2x 4.2	1.5	44		A40	44
1) DM 25x60 HF, 2x3.5MM	8601226070	White / Red	25 x 60	2x 3.5	1.5	33		J64	33
1) DM 25x60 HF, 2x4.5MM	8601226065	White / Black	25 x 60	2x 4.5	1.5	33		J30	33
1) DM 27x12 HF, 2x3.0MM	8601226000	White / Black	27 x 12	2x 3.0	0.8	140		87	140



DM Rectangular without radius, 2x hole

Article	Order No.	Color	Label size mm	Number x Holes mm	Material thickness mm	Quantity per mat	Min. order quantity	Software Article	PU pcs.
¹⁾ DM 27x12.5 HF, 2x2.6MM	8601226002	Silver / Black	27 x 12.5	2x 2.6	0.8	140		457	140
¹⁾ DM 30x15 HF, 2x2.5MM	8601226011	Silver / Black	30 x 15	2x 2.5	0.8	108		372	108
¹⁾ DM 30x15 HF, 2x3.6MM	8601226018	White / Black	30 x 15	2x 3.6	0.8	108		052	108
¹⁾ DM 30x180 HF, 2x3.5MM	8601220126	Yellow / Black	30 x 180	2x 3.5	1.5	9		9R	9
¹⁾ DM 30x60 HF, 2x3.2MM	8601226073	Black / White	30 x 60	2x 3.2	0.8	27		K80	27
¹⁾ DM 30x60 HF, 2x3.2MM	8601226058	Siemens silver / Black	30 x 60	2x 3.2	1.5	27		D22	27
¹⁾ DM 36x18 HF, 2x2.2MM	8601226066	Red / White	36 x 18	2x 2.2	0.8	80		J58	80
¹⁾ DM 36x18 HF, 2x2.2MM	8601226067	Black / White	36 x 18	2x 2.2	0.8	80		J59	80
¹⁾ DM 37x18 HF, 2x3.0MM	8601226060	White / Black	37 x 18	2x 3.0	1.5	70		E28	70
¹⁾ DM 40x10 HF, 2x2.6MM	8601226029	Siemens silver / Black	40 x 10	2x 2.6	1.5	119		667	119
¹⁾ DM 40x10 HF, 2x3.5MM	8601226009	Siemens silver / Black	40 x 10	2x 3.5	0.8	119		AX6	119
¹⁾ DM 40x10 HF, 2x3.5MM	8601226031	Siemens silver / Black	40 x 10	2x 3.5	1.5	119		A22	119
¹⁾ DM 40x15 HF, 2x2.5MM	8601226017	White / Black	40 x 15	2x 2.5	1.5	84		014	84
¹⁾ DM 40x180 HF, 2x3.5MM	8601226069	White / Red	40 x 180	2x 3.5	1.5	7		J63	7
¹⁾ DM 40x20 HF, 2x2.5MM	8601226040	White / Black	40 x 20	2x 2.5	1.5	63		4N	63
¹⁾ DM 40x22 HF, 2x2.8MM	8601226041	Yellow / Black	40 x 22	2x 2.8	1.5	56		5P	56
¹⁾ DM 40x22 HF, 2x2.8MM	8601226022	White / Black	40 x 22	2x 2.8	1.5	56		081	56
¹⁾ DM 40x25 HF, 2x2.5MM	8601226064	White / Black	40 x 25	2x 2.5	0.8	49		J26	49
¹⁾ DM 40x40 HF, 2x2.6MM	8601226030	Siemens silver / Black	40 x 40	2x 2.6	1.5	28		668	28
¹⁾ DM 40x40 HF, 2x2.8MM	8601226025	White / Black	40 x 40	2x 2.8	0.8	28		292	28
¹⁾ DM 42x18 HF, 2x2.8MM	8601226062	Red / White	42 x 18	2x 2.8	0.8	60		196	60



DM Rectangular without radius, 2x hole

Article	Order No.	Color	Label size mm	Number x Holes mm	Material thickness mm	Quantity per mat	Min. order quantity	Software Article	PU pcs.
DM 42x18 HF, 2x2,8MM 1)	8601226057	Black / White	42 x 18	2x 2.8	0.8	60		A57	60
DM 46x46 HF, 2x6,0MM 1)	8601226052	Siemens silver / Black	46 x 46	2x 6.0	0.8	24		A48	24
DM 50x15 HF, 2x2,8MM 1)	8601226021	White / Black	50 x 15	2x 2.8	1.5	60		080	60
DM 50x20 HF, 2x2,2MM 1)	8601226082	Black / White	50 x 20	2x 2.2	0.8	45		M86	45
DM 50x20 HF, 2x3MM 1)	8601226074	White / Black	50 x 20	2x 3.0	1.5	45		L29	45
DM 50x25 HF, 2x3,2MM 1)	8601226035	White / Black	50 x 25	2x 3.2	0.8	35		IZ	35
DM 50x30 HF, 2x3,0MM 1)	8601226005	White / Black	50 x 30	2x 3.0	0.8	30		439	30
DM 50x50 HF, 2x2,6MM 1)	8601226036	Siemens silver / Black	50 x 50	2x 2.6	1.5	15		2T	15
DM 52x18 HF, 2x2,5MM 1)	8601226024	Black / White	52 x 18	2x 2.5	0.8	50		224	50
DM 52x37 HF, 2x6,0MM 1)	8601226049	Siemens silver / Black	52 x 37	2x 6.0	0.8	25		A45	25
DM 52x52 HF, 2x6,0MM 1)	8601226054	Siemens silver / Black	52 x 52	2x 6.0	0.8	15		A50	15
DM 70x27 HF, 2x2,6MM 1)	8601226043	Siemens silver / Black	70 x 27	2x 2.6	1.5	24		5Z	24
DM 70x35 HF, 2x6MM 1)	8601226079	White / Black	70 x 35	2x 6.0	1.5	20		L87	20
DM 72x19 HF, 2x2,0MM 1)	8601226010	White / Black	72 x 19	2x 2.0	1.5	36		864	36
DM 72x19 HF, 2x3,2MM 1)	8601226075	White / Black	72 x 19	2x 3.2	1.5	36		L62	36
DM 74x148 HF, 2x6,0MM 1)	8601226050	Siemens silver / Black	74 x 148	2x 6.0	0.8	3		A46	3
DM 74x52 HF, 2x6,0MM 1)	8601226053	Siemens silver / Black	74 x 52	2x 6.0	0.8	12		A49	9
DM 80x15 HF, 2x3,5MM 1)	8601226028	Siemens silver / Black	80 x 15	2x 3.5	1.5	36		666	36
DM 90x10 HF, 2x3,5MM 1)	8601226056	Gray / White	90 x 10	2x 3.5	1.5	51		B81	51
DM 90x10 HF, 2x3,5MM 1)	8601226055	Orange / White	90 x 10	2x 3.5	1.5	51		B86	51
DM° 15x80 HF, 2x4,0MM 1)	8601226042	Siemens silver / Black	15 x 80	2x 4.0	0.8	38		5U	38
Without corner radius; with self-adhesive foil									



DM Rectangular without radius, 2x hole

Article	Order No.	Color	Label size mm	Number x Holes mm	Material thickness mm	Quantity per mat	Min. order quantity	Software Article	PU pcs.
DM 100x20 SK, 2x3.75 mm 1)	8601220008	Blue / White	100 x 20	2x 3.75	0.8	18		241	18
DM 100x20 SK, 2x3.75 mm 1)	8601220007	Red / White	100 x 20	2x 3.75	0.8	18		RK0	18
DM 100x20 SK, 2x3.75 mm 1)	8601220006	Black / White	100 x 20	2x 3.75	0.8	18		RK1	18
DM 100x20 SK, 2x3.75 mm 1)	8601220135	White / Black	100 x 20	2x 3.75	1.5	18		D94	18
DM 100x30 SK, 2x3.0MM 1)	8601220065	White / Black	100 x 30	2x 3.0	0.8	12		772	12
DM 10x25 SK, 2x2.2MM 1)	8601220129	Siemens silver / Black	10 x 25	2x 2.2	0.8	189		A10	189
DM 10x30 SK, 2x2.0MM 1)	8601220015	White / Black	10 x 30	2x 2.0	1.5	162		B43	162
DM 10x30 SK, 2x2.2MM 1)	8601220125	Siemens silver / Black	10 x 30	2x 2.2	0.8	162		90	162
DM 10x30 SK, 2x3.0MM 1)	8601220014	White / Black	10 x 30	2x 3.0	1.5	162		B47	162
DM 10x30 SK, 2x3.2MM 1)	8601220131	Siemens silver / Black	10 x 30	2x 3.2	0.8	162		D55	168
DM 10x30 SK, 2x3.2MM 1)	8601220102	Silver / Black	10 x 30	2x 3.2	0.8	162		039	162
DM 120x60 SK, 2x3.5MM 1)	8601220116	White / Black	120 x 60	2x 3.5	1.5	6		549	6
DM 13x37 SK, 2x2.2MM 1)	8601220038	Siemens silver / Black	13 x 37	2x 2.2	0.8	105		B45	105
DM 13x37 SK, 2x2.2MM 1)	8601220037	Silver / Black	13 x 37	2x 2.2	0.8	105		B44	105
DM 13x37 SK, 2x2.2MM 1)	8601220033	White / Black	13 x 37	2x 2.2	1.5	105		B39	105
DM 140x25 SK, 2x2.8MM 1)	8601220029	White / Black	140 x 25	2x 2.8	0.8	14		G93	14
DM 140x25 SK, 2x3.5MM 1)	8601220082	Siemens silver / Black	140 x 25	2x 3.5	0.8	14		955	14
DM 142x9 SK, 2x3.0MM 1)	8601220068	White / Black	142 x 9	2x 3.0	0.8	38		775	38
DM 14x148 SK, 2x3.5MM 1)	8601220100	White / Black	14 x 148	2x 3.5	0.8	20		63	20
DM 14x45 SK, 2x3.0MM 1)	8601220024	Silver / Black	14 x 45	2x 3.0	0.8	80		505	80
DM 15x45 SK, 2x2.5MM 1)	8601220050	Siemens silver / Black	15 x 45	2x 2.5	0.8	72		636	72
DM 15x60 SK, 2x4.0MM 1)	8601220140	White / Black	15 x 60	2x 4.0	1.5	57		197	57



DM Rectangular without radius, 2x hole

Article	Order No.	Color	Label size mm	Number x Holes mm	Material thickness mm	Quantity per mat	Min. order quantity	Software Article	PU pcs.
DM 20x30 SK, 2x3.5MM 1)	8601220114	Siemens silver / Black	20 x 30	2x 3.5	1.5	84		858	84
DM 20x30 SK, 2x4.2MM 1)	8601220048	White / Black	20 x 30	2x 4.2	0.8	84		620	84
DM 20x60 SK, 2x2.2MM 1)	8601220143	White / Black	20 x 60	2x 2.2	0.8	42		M44	39
DM 20x60 SK, 2x4.0MM 1)	8601220063	Siemens silver / Black	20 x 60	2x 4.0	0.8	42		755	42
DM 20x60 SK, 2x4.0MM 1)	8601220107	White / Black	20 x 60	2x 4.0	0.8	42		049	42
DM 220x40 SK, 2x2,8MM 1)	8601220028	White / Black	220 x 40	2x 2.8	0.8	4		511	4
DM 220x40 SK, 2x3,0MM 1)	8601220075	Silver / Black	220 x 40	2x 3.0	0.8	4		903	4
DM 25x60 SK, 2x2,5MM 1)	8601220051	Siemens silver / Black	25 x 60	2x 2.5	0.8	33		637	33
DM 25x75 SK, 2x3,0MM 1)	8601220104	Bronze / Black	25 x 75	2x 3.0	0.8	22		235	22
DM 25x75 SK, 2x3,0MM 1)	8601220105	Gold / Black	25 x 75	2x 3.0	0.8	22		210	22
DM 25x75 SK, 2x3,0MM 1)	8601220106	Siemens silver / Black	25 x 75	2x 3.0	0.8	22		331	22
DM 26.5x59.7 SK, 2x3.5MM 1)	8601220093	White / Black	26.5 x 59.7	2x 3.5	0.8	30		030	30
DM 27x12 SK, 2x2,0MM 1)	8601220022	Siemens silver / Black	27 x 12	2x 2.0	0.8	140		480	140
DM 27x12 SK, 2x3,0MM 1)	8601220070	Silver / Black	27 x 12	2x 3.0	0.8	140		803	140
DM 30x15 SK, 2x2,0MM 1)	8601220074	Siemens silver / Black	30 x 15	2x 2.0	0.8	108		881	108
DM 30x15 SK, 2x2,5MM 1)	8601220090	Silver / Black	30 x 15	2x 2.5	0.8	108		250	108
DM 30x15 SK, 2x3,0MM 1)	8601220012	White / Black	30 x 15	2x 3.0	0.8	108		322	108
DM 30x15 SK, 2x3,0MM 1)	8601220045	White / Black	30 x 15	2x 3.0	1.5	108		599	108
DM 30x60 SK, 2x2,2MM 1)	8601220132	Siemens silver / Black	30 x 60	2x 2.2	0.8	27		D56	27
DM 30x60 SK, 2x2,2MM 1)	8601220009	Silver / Black	30 x 60	2x 2.2	0.8	27		B31	27
DM 30x60 SK, 2x3,0MM 1)	8601220011	Silver / Black brushed	30 x 60	2x 3.0	0.8	27	162	467	27
DM 30x60 SK, 2x3,2MM 1)	8601220108	Black / White	30 x 60	2x 3.2	0.8	27		6B	27



DM Rectangular without radius, 2x hole

Article	Order No.	Color	Label size mm	Number x Holes mm	Material thickness mm	Quantity per mat	Min. order quantity	Software Article	PU pcs.
DM 30x60 SK, 2x3,5MM 1)	8601220121	Blue / White	30 x 60	2x 3.5	0.8	27		6N	27
DM 30x60 SK, 2x3,5MM 1)	8601220128	Yellow / Black	30 x 60	2x 3.5	0.8	27		9W	27
DM 30x60 SK, 2x3,5MM 1)	8601220010	White / Black	30 x 60	2x 3.5	0.8	27		465	27
DM 32x13 SK, 2x3,0MM 1)	8601220039	White / Black	32 x 13	2x 3.0	0.8	117		522	117
DM 35x20 SK, 2x3,0MM 1)	8601220089	Siemens silver / Black	35 x 20	2x 3.0	0.8	72		S78	72
DM 35x20 SK, 2x3,75MM 1)	8601220019	Blue / White	35 x 20	2x 3.75	0.8	72		468	72
DM 35x20 SK, 2x3,75MM 1)	8601220018	Red / White	35 x 20	2x 3.75	0.8	72		B34	72
DM 35x20 SK, 2x3,75MM 1)	8601220017	Black / White	35 x 20	2x 3.75	0.8	72		B35	72
DM 35x7 SK, 2x3,2MM 1)	8601220133	Siemens silver / Black	35 x 7	2x 3.2	0.8	200		D84	200
DM 35x7 SK, 2x3,2MM 1)	8601220136	White / Black	35 x 7	2x 3.2	0.8	200		D98	200
DM 35x90 SK, 2x3,5MM 1)	8601220056	White / Black	35 x 90	2x 3.5	0.8	16		G10	16
DM 40x10 SK, 2x3,0MM 1)	8601220032	White / Black	40 x 10	2x 3.0	1.5	119		B40	119
DM 40x12 SK, 2x2,2MM 1)	8601220057	Siemens silver / Black	40 x 12	2x 2.2	0.8	98		657	98
DM 40x15 SK, 2x2,0MM 1)	8601220137	Siemens silver / Black	40 x 15	2x 2.0	1.5	84		G39	84
DM 40x15 SK, 2x2,5MM 1)	8601220055	White / Black	40 x 15	2x 2.5	0.8	84		671	84
DM 40x15 SK, 2x2,5MM 1)	8601220123	White / Black	40 x 15	2x 2.5	0.8	84		8P	84
DM 40x15 SK, 2x3,2MM 1)	8601220109	Siemens silver / Black	40 x 15	2x 3.2	0.8	84		120	84
DM 40x15 SK, 2x3,2MM 1)	8601220130	Siemens silver / Black	40 x 15	2x 3.2	1.5	84		D21	84
DM 40x20 SK, 2x2,8MM 1)	8601220043	Siemens silver / Black	40 x 20	2x 2.8	0.8	63		320	63
DM 40x22 SK, 2x2,8MM 1)	8601220059	Silver / Black	40 x 22	2x 2.8	0.8	56		712	56
DM 40x22 SK, 2x2,8MM 1)	8601220060	White / Black	40 x 22	2x 2.8	0.8	56		711	56
DM 40x25 SK, 2x3,0MM 1)	8601220081	Silver / Black	40 x 25	2x 3.0	0.8	49		939	49



DM Rectangular without radius, 2x hole

Article	Order No.	Color	Label size mm	Number x Holes mm	Material thickness mm	Quantity per mat	Min. order quantity	Software Article	PU pcs.
DM 40x25 SK, 2x3,2MM 1)	8601220110	Siemens silver / Black	40 x 25	2x 3.2	0.8	49		121	49
DM 40x60 SK, 2x2,8MM 1)	8601220030	White / Black	40 x 60	2x 2.8	0.8	21		G95	21
DM 40x80 SK, 2x3,5MM 1)	8601220141	Red / White	40 x 80	2x 3.5	0.8	14		K62	14
DM 40x80 SK, 2x3,5MM 1)	8601220115	White / Black	40 x 80	2x 3.5	1.5	14		546	14
DM 48x15 SK, 2x3,75MM 1)	8601220078	White / Black	48 x 15	2x 3.75	0.8	72		900	72
DM 50x12 SK, 2x3,0MM 1)	8601220120	Siemens silver / Black	50 x 12	2x 3.0	0.8	70		907	70
DM 50x12 SK, 2x3,5MM 1)	8601220026	White / Black	50 x 12	2x 3.5	0.8	70		669	70
DM 50x15 SK, 2x2,0MM 1)	8601220112	White / Black	50 x 15	2x 2.0	0.8	60		313	60
DM 50x15 SK, 2x3,2MM 1)	8601220134	Siemens silver / Black	50 x 15	2x 3.2	0.8	60		D87	60
DM 50x16 SK, 2x2,0MM 1)	8601220071	Silver / Black	50 x 16	2x 2.0	0.8	55		808	55
DM 50x20 SK, 2x2,8MM 1)	8601220020	Yellow / Red	50 x 20	2x 2.8	0.8	45		467	45
DM 50x20 SK, 2x3,2MM 1)	8601220080	White / Black	50 x 20	2x 3.2	0.8	45		924	45
DM 50x20 SK, 2x3,75MM 1)	8601220002	Blue / White	50 x 20	2x 3.75	0.8	45		RK4	45
DM 50x20 SK, 2x3,75MM 1)	8601220001	Red / White	50 x 20	2x 3.75	0.8	45		RK3	45
DM 50x22 SK, 2x2,8MM 1)	8601220122	Siemens silver / Black	50 x 22	2x 2.8	1.5	40		8J	40
DM 50x25 SK, 2x2,5MM 1)	8601220091	Silver / Black	50 x 25	2x 2.5	0.8	35		249	35
DM 50x30 SK, 2x3,0MM 1)	8601220088	White / Black	50 x 30	2x 3.0	0.8	30		011	30
DM 50x30 SK, 2x3,5MM 1)	8601220118	Siemens silver / Black	50 x 30	2x 3.5	1.5	30		610	30
DM 50x30 SK, 2x3,5MM 1)	8601220117	White / Black	50 x 30	2x 3.5	1.5	30		609	30
DM 50x30 SK, 2x4,0MM 1)	8601220064	Siemens silver / Black	50 x 30	2x 4.0	0.8	30		757	30
DM 50x9 SK, 2x3,0MM 1)	8601220103	Siemens silver / Black	50 x 9	2x 3.0	0.8	95		26	95
DM 50x9 SK, 2x3,0MM 1)	8601220066	White / Black	50 x 9	2x 3.0	0.8	95		773	95



DM Rectangular without radius, 2x hole

Article	Order No.	Color	Label size mm	Number x Holes mm	Material thickness mm	Quantity per mat	Min. order quantity	Software Article	PU pcs.
DM 52x13 SK, 2x3,0MM 1)	8601220040	White / Black	52 x 13	2x 3.0	0.8	65		523	65
DM 55x15 SK, 2x3,0MM 1)	8601220072	White / Black	55 x 15	2x 3.0	0.8	60		282	60
DM 57x85 SK, 2x4,0MM 1)	8601220041	White / Blue	57 x 85	2x 4.0	1.5	10		B4B	10
DM 65x40 SK, 2x2,5MM 1)	8601220058	Siemens silver / Black	65 x 40	2x 2.5	0.8	16		701	16
DM 68x16 SK, 2x3,2MM 1)	8601220111	White / Black	68 x 16	2x 3.2	0.8	44		173	44
DM 6x35 SK, 2x3,0MM 1)	8601220119	White / Black	6 x 35	2x 3.0	0.8	225		817	225
DM 70x10 SK, 2x5,0MM 1)	8601220124	White / Black	70 x 10	2x 5.0	1.5	68		96	68
DM 70x20 SK, 2x3,75MM 1)	8601220005	Blue / White	70 x 20	2x 3.75	0.8	36		RJ0	36
DM 70x20 SK, 2x3,75MM 1)	8601220076	Yellow / Black	70 x 20	2x 3.75	0.8	36		896	36
DM 70x20 SK, 2x3,75MM 1)	8601220004	Red / White	70 x 20	2x 3.75	0.8	36		RJ1	36
DM 70x20 SK, 2x3,75MM 1)	8601220044	White / Black	70 x 20	2x 3.75	0.8	36		593	36
DM 70x25 SK, 2x3,0MM 1)	8601220061	White / Black	70 x 25	2x 3.0	0.8	28		729	28
DM 70x50 SK, 2x4,2MM 1)	8601220049	White / Black	70 x 50	2x 4.2	0.8	12		621	12
DM 76x30 SK, 2x3,0MM 1)	8601220079	Silver / Black	76 x 30	2x 3.0	0.8	18		902	18
DM 8,9x35 SK, 2x2,8MM 1)	8601220052	Yellow / Black	8.9 x 35	2x 2.8	0.8	155		498	155
DM 80x15 SK, 2x4,0MM 1)	8601220042	White / Black	80 x 15	2x 4.0	0.8	36		B42	36
DM 90x30 SK, 2x3,0MM 1)	8601220073	White / Black	90 x 30	2x 3.0	0.8	18		875	18
DM 95x25 SK, 2x3,2MM 1)	8601220098	Blue / White	95 x 25	2x 3.2	0.8	21		431	21
DM 95x25 SK, 2x3,2MM 1)	8601220097	Yellow / Black	95 x 25	2x 3.2	0.8	21		405	21
DM 95x25 SK, 2x3,2MM 1)	8601220095	Green / White	95 x 25	2x 3.2	0.8	21		410	21
DM 95x25 SK, 2x3,2MM 1)	8601220099	Red / White	95 x 25	2x 3.2	0.8	21		406	21
DM 95x25 SK, 2x3,2MM 1)	8601220096	Black / White	95 x 25	2x 3.2	0.8	21		396	21



DM Rectangular without radius, 2x hole

Article	Order No.	Color	Label size mm	Number x Holes mm	Material thickness mm	Quantity per mat	Min. order quantity	Software Article	PU pcs.
DM 95x25 SK, 2x3,2MM 1)	8601220069	White / Black	95 x 25	2x 3.2	0.8	21		792	21
DM 96x20 SK, 2x3,75MM 1)	8601220077	White / Black	95 x 20	2x 3.75	0.8	27		897	27
DM 9x92 SK, 2x3,0MM 1)	8601220067	White / Black	9 x 92	2x 3.0	0.8	60		774	60
DM° 10x25 SK, 2x2.2MM 1)	8601220016	Silver / Black	10 x 25	2x 2.2	0.8	189		323	189
DM° 25x60 SK, 2x2.8MM 1)	8601220027	White / Black	25 x 60	2x 2.8	0.8	33		B51	33
DM° 25x90 SK, 2x3.5MM 1)	8601220053	White / Black	25 x 90	2x 3.5	0.8	22		455	22
DM° 27x12 SK, 2x3.0MM 1)	8601220013	White / Black	27 x 12	2x 3.0	0.8	140		8A	140
DM° 40x20 SK, 2x2.8MM 1)	8601220025	White / Black	40 x 20	2x 2.8	0.8	63		B49	63
DM° 50x20 SK, 2x3.75 mm 1)	8601220000	Black / White	50 x 20	2x 3.75	0.8	45		RK2	45
DM° 50x25 SK, 2x3.0MM 1)	8601220083	White / Black	50 x 25	2x 3.0	0.8	35		979	35
DM° 70x20 SK, 2x3.75 mm 1)	8601220003	Black / White	70 x 20	2x 3.75	0.8	36		RJ2	36
Without corner radius; with high-strength adhesive foam foil									
DM 13x37 SKS, 2x2.5MM 2)	8601222005	White / Black	13 x 37	2x 2.5	0.8	105		604	105
DM 19x45 SKS, 2x2.6MM 2)	8601222010	Siemens silver / Black	19 x 45	2x 2.6	0.8	60		966	60
DM 19x45 SKS, 2x2.6MM 2)	8601222002	White / Black	19 x 45	2x 2.6	0.8	60		506	60
DM 27x12.5 SKS, 2x2.6MM 2)	8601222000	White / Black	27 x 12.5	2x 2.6	0.8	140		509	140
DM 30x15 SKS, 2x2.2MM 2)	8601222007	Siemens silver / Black	30 x 15	2x 2.2	0.8	108		837	108
DM 36x15 SKS, 2x2.2MM 2)	8601222008	Siemens silver / Black	36 x 15	2x 2.2	0.8	96		251	96
DM 70x27 SKS, 2x2.6MM 2)	8601222009	Siemens silver / Black	70 x 27	2x 2.6	0.8	24		317	24
DM 70x35 SKS, 2x2.6MM 2)	8601222011	Siemens silver / Black	70 x 35	2x 2.6	0.8	20		1E	20
DM 70x35 SKS, 2x2,6MM 2)	8601222001	White / Black	70 x 35	2x 2.6	0.8	20		510	20
DM° 10x25 SKS, 2x2.5MM 2)	8601222004	White / Black	10 x 25	2x 2.5	0.8	189		605	189



DM Rectangular without radius, 2x hole

Article	Order No.	Color	Label size mm	Number x Holes mm	Material thickness mm	Quantity per mat	Min. order quantity	Software Article	PU pcs.
---------	-----------	-------	---------------	-------------------	-----------------------	------------------	---------------------	------------------	---------

DM ⁹ 13x80 SKS, 2x4.5MM 2)	8601222006	Siemens silver / Black	13 x 80	2x 4.5	0.8	42		802	42
--	------------	------------------------	---------	--------	-----	----	--	-----	----

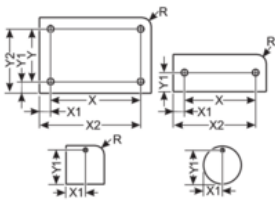
Without corner radius; with high-strength adhesive foil

DM 30x60 HFS, 2x3.2MM 1)	8601224001	Siemens silver / Black	30 x 60	2x 3.2	1.5	27		D69	27
-----------------------------	------------	------------------------	---------	--------	-----	----	--	-----	----

DM 40x15 HFS, 2x3.2MM 1)	8601224002	Siemens silver / Black	40 x 15	2x 3.2	1.5	84		D70	77
-----------------------------	------------	------------------------	---------	--------	-----	----	--	-----	----

1) Other sizes available on request
2) Due to the adhesive properties of the SKS film, it can happen that the manufactured signs stick together again after processing and have to be trimmed.

1) Other sizes available on request
2) Due to the adhesive properties of the SKS film, it can happen that the manufactured signs stick together again after processing and have to be trimmed.



Article	Order No.	Drill hole pitch X mm	Drill hole pitch Y mm	Drill hole position X1 mm	Drill hole position Y1 mm	Drill hole position X2 mm	Drill hole position Y2 mm
DM 100x20 HF, 2x3.75MM 1)	8601226059	88.75		5.63	10	94.37	
DM 100x35 HF, 2x4.0MM 1)	8601226076	88		6	17.5	94	
DM 100x50 HF, 2x2.6MM 1)	8601226037	90		5	25	95	
DM 105x52 HF, 2x6.0MM 1)	8601226048	93		6	46	99	
DM 10x20 HF, 2x4.0MM 1)	8601226044		12	5	4		16
DM 10x45 HF, 2x2.5MM 1)	8601226023		39	5	3		42
DM 10x45 HF, 2x3.0MM 1)	8601226045		40	5	2.5		42.5
DM 110x10 HF, 2x3.5MM 1)	8601226047	100		5	5	105	
DM 110x10 HF, 2x3.5MM 1)	8601226046	100		5	5	105	
DM 110x30 HF, 2x3.5MM 1)	8601220127	96		7	15	103	
DM 12x34 HF, 2x3.5MM 1)	8601226016		24	6	5		29
DM 12x90 HF, 2x3MM 1)	8601226083		81	6	4.5		85.5



DM Rectangular without radius, 2x hole

Article	Order No.	Drill hole pitch X mm	Drill hole pitch Y mm	Drill hole position X1 mm	Drill hole position Y1 mm	Drill hole position X2 mm	Drill hole position Y2 mm
DM 144x42 HF, 2x6.8MM 1)	8601226034	132		6	21	138	
DM 14x45 HF, 2x3.0MM 1)	8601226004		37	7	4		41
DM 15x45 HF, 2x3.5MM 1)	8601226019		37.5	7.5	3.75		41.25
DM 15x60 HF, 2x2.6MM 1)	8601226027		50	7.5	5		55
DM 17x20 HF, 2x2.5MM 1)	8601226072		16	8.5	2		18
DM 18x62 HF, 2x6.8MM 1)	8601226033		50	9	6		56
DM 20x42 HF, 2x3.0MM 1)	8601226013		33	10	4.5		37.5
DM 20x60 HF, 2x2.2MM 1)	8601226081		53.4	10	3.3		56.7
DM 20x60 HF, 2x2.5MM 1)	8601226061		55	10	2.5		57.5
DM 20x60 HF, 2x3.5MM 1)	8601226038		52	10	4		56
DM 20x60 HF, 2x3.5MM 1)	8601226020		52	10	4		56
DM 20x60 HF, 2x3.5MM 1)	8601226071		50	10	5		55
DM 20x80 HF, 2x3.0MM 1)	8601226084		64	10	8		72
DM 20x80 HF, 2x3.0MM 1)	8601226007		74	10	3		77
DM 210x40 HF, 2x3.5MM 1)	8601226068	200		5	20	205	
DM 210x52 HF, 2x6.0MM 1)	8601226051	196		7	26	203	
DM 22x60 HF, 2x6.0MM 1)	8601226078		46	11	7	11	53
DM 25x45 HF, 2x4.2MM 1)	8601226032		37	12.5	4		41
DM 25x60 HF, 2x3.5MM 1)	8601226070		50	12.5	5		55
DM 25x60 HF, 2x4.5MM 1)	8601226065		42.5	5	12.5		55
DM 27x12 HF, 2x3.0MM 1)	8601226000	21		3	6	24	
DM 27x12.5 HF, 2x2.6MM 1)	8601226002	18		4.5	6.25	22.5	
DM 30x15 HF, 2x2.5MM 1)	8601226011	25		2.5	7.5	27.5	
DM 30x15 HF, 2x3.6MM 1)	8601226018	24		3	9	27	
DM 30x180 HF, 2x3.5MM 1)	8601220126	166		15	7		173



DM Rectangular without radius, 2x hole

Article	Order No.	Drill hole pitch X mm	Drill hole pitch Y mm	Drill hole position X1 mm	Drill hole position Y1 mm	Drill hole position X2 mm	Drill hole position Y2 mm
DM 30x60 HF, 2x3,2MM 1)	8601226073		50	15	5		55
DM 30x60 HF, 2x3,2MM 1)	8601226058		50	15	5		55
DM 36x18 HF, 2x2,2MM 1)	8601226066	30		3	9	33	
DM 36x18 HF, 2x2,2MM 1)	8601226067	30		3	9	33	
DM 37x18 HF, 2x3,0MM 1)	8601226060	31		3	9	34	
DM 40x10 HF, 2x2,6MM 1)	8601226029	30		5	5	35	
DM 40x10 HF, 2x3,5MM 1)	8601226009	32		4	5	36	
DM 40x10 HF, 2x3,5MM 1)	8601226031	32		4	5	36	
DM 40x15 HF, 2x2,5MM 1)	8601226017	30		5	7.5	35	
DM 40x180 HF, 2x3,5MM 1)	8601226069		170	20	5		175
DM 40x20 HF, 2x2,5MM 1)	8601226040	32		4	10	36	
DM 40x22 HF, 2x2,8MM 1)	8601226041	30		5	11	35	
DM 40x22 HF, 2x2,8MM 1)	8601226022	30		5	11	35	
DM 40x25 HF, 2x2,5MM 1)	8601226064	36		2	12.5	38	
DM 40x40 HF, 2x2,6MM 1)	8601226030	30		5	20	35	
DM 40x40 HF, 2x2,8MM 1)	8601226025	30		5	20	35	
DM 42x18 HF, 2x2,8MM 1)	8601226062	36		3	9	39	
DM 42x18 HF, 2x2,8MM 1)	8601226057	36		3	9	39	
DM 46x46 HF, 2x6,0MM 1)	8601226052		34	14	6		40
DM 50x15 HF, 2x2,8MM 1)	8601226021	40		5	7.5	45	
DM 50x20 HF, 2x2,2MM 1)	8601226082	43.4		3.3	10	46.7	
DM 50x20 HF, 2x3MM 1)	8601226074	30		10	5	40	
DM 50x25 HF, 2x3,2MM 1)	8601226035	45		2.5	12.5	47.5	
DM 50x30 HF, 2x3,0MM 1)	8601226005	43		3.5	15	46.5	
DM 50x50 HF, 2x2,6MM 1)	8601226036	40		5	25	45	



DM Rectangular without radius, 2x hole

Article	Order No.	Drill hole pitch X mm	Drill hole pitch Y mm	Drill hole position X1 mm	Drill hole position Y1 mm	Drill hole position X2 mm	Drill hole position Y2 mm
DM 52x18 HF, 2x2,5MM 1)	8601226024	46		3	9		49
DM 52x37 HF, 2x6,0MM 1)	8601226049	40		6	18.5		46
DM 52x52 HF, 2x6,0MM 1)	8601226054	40		6	6		46
DM 70x27 HF, 2x2,6MM 1)	8601226043	62		4	13.5		66
DM 70x35 HF, 2x6MM 1)	8601226079	50		10	17.5		60 17.5
DM 72x19 HF, 2x2,0MM 1)	8601226010	62		5	9.5		67
DM 72x19 HF, 2x3,2MM 1)	8601226075	62		5	9.5		67
DM 74x148 HF, 2x6,0MM 1)	8601226050		132	8	8		140
DM 74x52 HF, 2x6,0MM 1)	8601226053	62		6	26		68
DM 80x15 HF, 2x3,5MM 1)	8601226028	70		5	7.5		75
DM 90x10 HF, 2x3,5MM 1)	8601226056	83		3.5	5		86.5
DM 90x10 HF, 2x3,5MM 1)	8601226055	83		3.5	5		86.5
DM° 15x80 HF, 2x4,0MM 1)	8601226042		74	7.5	3		77
Without corner radius; with self-adhesive foil							
DM 100x20 SK, 2x3.75 mm 1)	8601220008	88.75		5.63	10		94.37
DM 100x20 SK, 2x3.75 mm 1)	8601220007	88.75		5.63	10		94.37
DM 100x20 SK, 2x3.75 mm 1)	8601220006	88.75		5.63	10		94.37
DM 100x20 SK, 2x3.75 mm 1)	8601220135	88.75		5.63	10		94.38
DM 100x30 SK, 2x3.0MM 1)	8601220065	90		5	15		95
DM 10x25 SK, 2x2.2MM 1)	8601220129		21	5	2		23
DM 10x30 SK, 2x2.0MM 1)	8601220015		23	5	3.5		26.5
DM 10x30 SK, 2x2.2MM 1)	8601220125		24	5	3		27
DM 10x30 SK, 2x3.0MM 1)	8601220014		23	5	3.5		26.5
DM 10x30 SK, 2x3.2MM 1)	8601220131		24	5	3		27
DM 10x30 SK, 2x3.2MM 1)	8601220102		24	5	3		27



DM Rectangular without radius, 2x hole

Article	Order No.	Drill hole pitch X mm	Drill hole pitch Y mm	Drill hole position X1 mm	Drill hole position Y1 mm	Drill hole position X2 mm	Drill hole position Y2 mm
DM 120x60 SK, 2x3.5MM 1)	8601220116	112		4	30	116	
DM 13x37 SK, 2x2.2MM 1)	8601220038		32	6.5	2.5		34.5
DM 13x37 SK, 2x2.2MM 1)	8601220037		32	6.5	2.5		34.5
DM 13x37 SK, 2x2.2MM 1)	8601220033		32	6.5	2.5		34.5
DM 140x25 SK, 2x2.8MM 1)	8601220029	130		5	12.5	135	
DM 140x25 SK, 2x3.5MM 1)	8601220082	124		8	12.5	132	
DM 142x9 SK, 2x3.0MM 1)	8601220068	132		5	4.5	137	
DM 14x148 SK, 2x3.5MM 1)	8601220100		138	7	5		143
DM 14x45 SK, 2x3.0MM 1)	8601220024		37	7	4		41
DM 15x45 SK, 2x2.5MM 1)	8601220050		36	7.5	4.5		40.5
DM 15x60 SK, 2x4.0MM 1)	8601220140		50	7.5	5		55
DM 20x30 SK, 2x3.5MM 1)	8601220114		22	10	4		26
DM 20x30 SK, 2x4.2MM 1)	8601220048		22	10	4		26
DM 20x60 SK, 2x2.2MM 1)	8601220143		53.4	10	3.3		56.7
DM 20x60 SK, 2x4.0MM 1)	8601220063		52	10	4		56
DM 20x60 SK, 2x4.0MM 1)	8601220107		52	10	4		56
DM 220x40 SK, 2x2,8MM 1)	8601220028	213		3.5	20	216.5	
DM 220x40 SK, 2x3,0MM 1)	8601220075	213		3.5	20	216.5	
DM 25x60 SK, 2x2,5MM 1)	8601220051		51	12.5	4.5		55.5
DM 25x75 SK, 2x3,0MM 1)	8601220104		65	12.5	5		70
DM 25x75 SK, 2x3,0MM 1)	8601220105		65	12.5	5		70
DM 25x75 SK, 2x3,0MM 1)	8601220106		65	12.5	5		70
DM 26.5x59.7 SK, 2x3.5MM 1)	8601220093		52	13.25	3.85		55.85
DM 27x12 SK, 2x2,0MM 1)	8601220022	21		3	6	24	
DM 27x12 SK, 2x3,0MM 1)	8601220070	21		3	6	24	



DM Rectangular without radius, 2x hole

Article	Order No.	Drill hole pitch X mm	Drill hole pitch Y mm	Drill hole position X1 mm	Drill hole position Y1 mm	Drill hole position X2 mm	Drill hole position Y2 mm
DM 30x15 SK, 2x2,0MM 1)	8601220074	22		4	7.5		26
DM 30x15 SK, 2x2,5MM 1)	8601220090	24		3	7.5		27
DM 30x15 SK, 2x3,0MM 1)	8601220012	24		3	7.5		27
DM 30x15 SK, 2x3,0MM 1)	8601220045	24		3	7.5		27
DM 30x60 SK, 2x2,2MM 1)	8601220132		54	15	3		57
DM 30x60 SK, 2x2,2MM 1)	8601220009		52	15	4		56
DM 30x60 SK, 2x3,0MM 1)	8601220011		52	15	4		56
DM 30x60 SK, 2x3,2MM 1)	8601220108		52	15	4		56
DM 30x60 SK, 2x3,5MM 1)	8601220121		52	15	4		56
DM 30x60 SK, 2x3,5MM 1)	8601220128		52	15	4		56
DM 30x60 SK, 2x3,5MM 1)	8601220010		52	15	4		56
DM 32x13 SK, 2x3,0MM 1)	8601220039	25		3.5	6.5		28.5
DM 35x20 SK, 2x3,0MM 1)	8601220089	28		3.5	10		31.5
DM 35x20 SK, 2x3,75MM 1)	8601220019	27		4	10		31
DM 35x20 SK, 2x3,75MM 1)	8601220018	27		4	10		31
DM 35x20 SK, 2x3,75MM 1)	8601220017	27		4	10		31
DM 35x7 SK, 2x3,2MM 1)	8601220133	28		3.5	3.5		31.5
DM 35x7 SK, 2x3,2MM 1)	8601220136	28		3.5	3.5		31.5
DM 35x90 SK, 2x3,5MM 1)	8601220056		78	17.5	6		84
DM 40x10 SK, 2x3,0MM 1)	8601220032	32		4	5		36
DM 40x12 SK, 2x2,2MM 1)	8601220057	32		4	6		36
DM 40x15 SK, 2x2,0MM 1)	8601220137	34		3	7.5		37
DM 40x15 SK, 2x2,5MM 1)	8601220055	32		4	7.5		36
DM 40x15 SK, 2x2,5MM 1)	8601220123	34		3	7.5		37
DM 40x15 SK, 2x3,2MM 1)	8601220109	34		3	7.5		37



DM Rectangular without radius, 2x hole

Article	Order No.	Drill hole pitch X mm	Drill hole pitch Y mm	Drill hole position X1 mm	Drill hole position Y1 mm	Drill hole position X2 mm	Drill hole position Y2 mm
DM 40x15 SK, 2x3,2MM 1)	8601220130	30		5	7.5		35
DM 40x20 SK, 2x2,8MM 1)	8601220043	33		3.5	10		36.5
DM 40x22 SK, 2x2,8MM 1)	8601220059	30		5	11		35
DM 40x22 SK, 2x2,8MM 1)	8601220060	30		5	11		35
DM 40x25 SK, 2x3,0MM 1)	8601220081	34		3	12.5		37
DM 40x25 SK, 2x3,2MM 1)	8601220110	34		3	12.5		37
DM 40x60 SK, 2x2,8MM 1)	8601220030		53	20	3.5		56.5
DM 40x80 SK, 2x3,5MM 1)	8601220141		69.5	20	5.25		74.75
DM 40x80 SK, 2x3,5MM 1)	8601220115		72	20	4		76
DM 48x15 SK, 2x3,75MM 1)	8601220078	38		5	7.5		43
DM 50x12 SK, 2x3,0MM 1)	8601220120	42		4	6		46
DM 50x12 SK, 2x3,5MM 1)	8601220026	40		5	6		45
DM 50x15 SK, 2x2,0MM 1)	8601220112	45		2.5	7.5		47.5
DM 50x15 SK, 2x3,2MM 1)	8601220134	44		3	7.5		47
DM 50x16 SK, 2x2,0MM 1)	8601220071	44		3	8		47
DM 50x20 SK, 2x2,8MM 1)	8601220020	43		3.5	10		46.5
DM 50x20 SK, 2x3,2MM 1)	8601220080	40		5	10		45
DM 50x20 SK, 2x3,75MM 1)	8601220002	42		4	10		46
DM 50x20 SK, 2x3,75MM 1)	8601220001	42		4	10		46
DM 50x22 SK, 2x2,8MM 1)	8601220122	42		4	11		46
DM 50x25 SK, 2x2,5MM 1)	8601220091	40		5	12.5		45
DM 50x30 SK, 2x3,0MM 1)	8601220088	43		3.5	15		46.5
DM 50x30 SK, 2x3,5MM 1)	8601220118	42		4	15		46
DM 50x30 SK, 2x3,5MM 1)	8601220117	42		4	15		46
DM 50x30 SK, 2x4,0MM 1)	8601220064	40		5	15		45



DM Rectangular without radius, 2x hole

Article	Order No.	Drill hole pitch X mm	Drill hole pitch Y mm	Drill hole position X1 mm	Drill hole position Y1 mm	Drill hole position X2 mm	Drill hole position Y2 mm
DM 50x9 SK, 2x3,0MM 1)	8601220103	40		5	4.5		45
DM 50x9 SK, 2x3,0MM 1)	8601220066	40		5	4.5		45
DM 52x13 SK, 2x3,0MM 1)	8601220040	45		3.5	6.5		48.5
DM 55x15 SK, 2x3,0MM 1)	8601220072	45		5	7.5		50
DM 57x85 SK, 2x4,0MM 1)	8601220041		74	28.5	5.5		79.5
DM 65x40 SK, 2x2,5MM 1)	8601220058	55		5	20		60
DM 68x16 SK, 2x3,2MM 1)	8601220111	62		3	8		65
DM 6x35 SK, 2x3,0MM 1)	8601220119		28	3	3.5		31.5
DM 70x10 SK, 2x5,0MM 1)	8601220124	60		5	5		65
DM 70x20 SK, 2x3,75MM 1)	8601220005	60		5	10		65
DM 70x20 SK, 2x3,75MM 1)	8601220076	60		5	10		65
DM 70x20 SK, 2x3,75MM 1)	8601220004	60		5	10		65
DM 70x20 SK, 2x3,75MM 1)	8601220044	60		5	10		65
DM 70x25 SK, 2x3,0MM 1)	8601220061				12.5		
DM 70x50 SK, 2x4,2MM 1)	8601220049	62		4	25		66
DM 76x30 SK, 2x3,0MM 1)	8601220079	69		3.5	15		72.5
DM 8,9x35 SK, 2x2.8MM 1)	8601220052		27	4.45	4		31
DM 80x15 SK, 2x4,0MM 1)	8601220042	70		5	7.5		75
DM 90x30 SK, 2x3,0MM 1)	8601220073	80		5	15		85
DM 95x25 SK, 2x3,2MM 1)	8601220098	75			12.5		
DM 95x25 SK, 2x3,2MM 1)	8601220097	75			12.5		
DM 95x25 SK, 2x3,2MM 1)	8601220095	75			12.5		
DM 95x25 SK, 2x3,2MM 1)	8601220099	75			12.5		
DM 95x25 SK, 2x3,2MM 1)	8601220096	75			12.5		
DM 95x25 SK, 2x3,2MM 1)	8601220069	75		10	12.5		85



DM Rectangular without radius, 2x hole

Article	Order No.	Drill hole pitch X mm	Drill hole pitch Y mm	Drill hole position X1 mm	Drill hole position Y1 mm	Drill hole position X2 mm	Drill hole position Y2 mm
DM 96x20 SK, 2x3,75MM 1)	8601220077	86		5	10		91
DM 9x92 SK, 2x3,0MM 1)	8601220067		82	4.5	5		87
DM° 10x25 SK, 2x2.2MM 1)	8601220016		21	5	2		23
DM° 25x60 SK, 2x2.8MM 1)	8601220027		51	12.5	4.5		55.5
DM° 25x90 SK, 2x3.5MM 1)	8601220053		80	12.5	5		85
DM° 27x12 SK, 2x3.0MM 1)	8601220013	21		3	6	24	
DM° 40x20 SK, 2x2.8MM 1)	8601220025	33		3.5	10	36.5	
DM° 50x20 SK, 2x3.75 mm 1)	8601220000	42		4	10	46	
DM° 50x25 SK, 2x3.0MM 1)	8601220083	42		4	12.5	46	
DM° 70x20 SK, 2x3.75 mm 1)	8601220003	60		5	10	65	

Without corner radius; with high-strength adhesive foam foil

DM 13x37 SKS, 2x2.5MM 2)	8601222005		32	6.5	2.5		34.5
DM 19x45 SKS, 2x2.6MM 2)	8601222010		36	9.5	4.5		40.5
DM 19x45 SKS, 2x2.6MM 2)	8601222002		36	9.5	4.5		40.5
DM 27x12.5 SKS, 2x2.6MM 2)	8601222000	18		4.5	6.25	22.5	
DM 30x15 SKS, 2x2.2MM 2)	8601222007	22		4	7.5	26	
DM 36x15 SKS, 2x2.2MM 2)	8601222008	26		5	7.5	31	
DM 70x27 SKS, 2x2.6MM 2)	8601222009	62		4	13.5	66	
DM 70x35 SKS 2x2.6MM 2)	8601222011	62		4.5	17.5	65.5	
DM 70x35 SKS, 2x2.6MM 2)	8601222001	62		4.5	17.5	65.5	
DM° 10x25 SKS, 2x2.5MM 2)	8601222004		21	5	2		23
DM° 13x80 SKS, 2x4.5MM 2)	8601222006		70	6.5	5		75

Without corner radius; with high-strength adhesive foil

DM 30x60 HFS, 2x3.2MM 1)	8601224001		50	15	5		55
DM 40x15 HFS, 2x3.2MM 1)	8601224002	34		3	7.5	37	



DM Rectangular without radius, 2x hole

Article	Order No.	Drill hole pitch X mm	Drill hole pitch Y mm	Drill hole position X1 mm	Drill hole position Y1 mm	Drill hole position X2 mm	Drill hole position Y2 mm
1) Other sizes available on request 2) Due to the adhesive properties of the SKS film, it can happen that the manufactured signs stick together again after processing and have to be trimmed.							

Adhesive properties



467
5016SK adhesive film with adhesive
SKS adhesive film with foam adhesive

Thermal properties



Temperature / temperature range
-30 °C - 80 °C

Classification

ETIM 9: EC001288
ECLASS 14: 27144009
UNSPSC 26.0801: 39131504

General technical data



Assembly method
00000001Label glued into place 0001Mounting the label with screws 0

Assembly method



Adhesive system



Screw system

Labelling technology



Plotter



Engraving