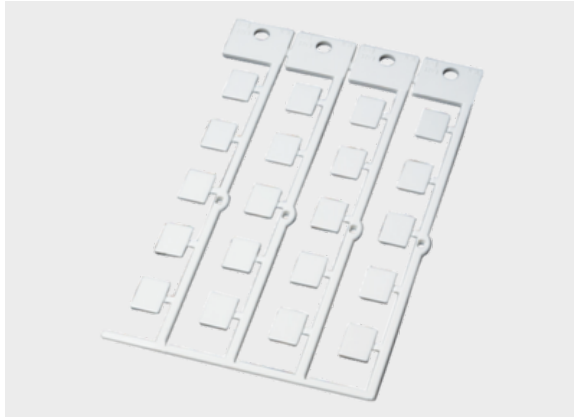




Typ KSL



Product information

KSL – for devices made by Bosch/Rexroth and Lumberg.
High-quality, halogen-free label plates to snap into devices.


The large printable area at the top provides space for individual project and component reference, without the need to organize additional systems.

Information, conformities and approvals




Article	Order No.	Color	RAL similar	Label size * mm	Printable area* mm	Number of characters / lines	Quantity per frame	Base plate	Software Article	PU pcs.
KSL 12x9	86421060	White	9016	9 x 12	9 x 12	6 / 2	20	GP4 Single tree adapter 4	170	380
KSL 20x9	86421062	White	9016	9 x 20	9 x 20	11 / 2	20	GP4 Single tree adapter 4	171	380


Material properties

 Polycarbonate (PC)

Thermal properties

 Temperature / temperature range
-40 °C - 130 °C

Fire properties

 Fire classification
V0



Typ KSL

Technical information



Halogen-free

Classification

ETIM 9: EC000761
ECLASS 14: 27281101
UNSPSC 26.0801: 39131504

General technical data



Assembly method

0000000010000

Assembly method



Snap-fit system

Labelling technology



Plotter



Laser



Inkjet