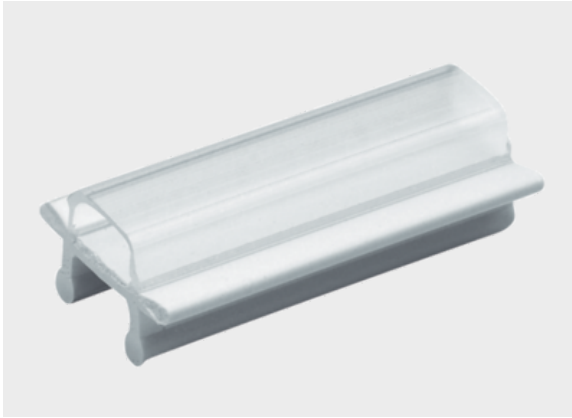




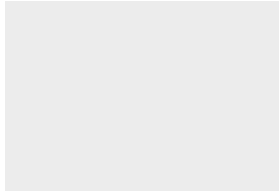
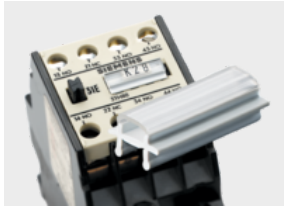
KM 6



Product information

High-quality, transparent label holder for component labeling.
Assembly is via snap-in action.
Adapters render the label holders usable for device location labeling.

Information, conformities and approvals



| Article | Order No. | Color | Length mm | Width mm | Recommended Label | Label size mm | Number of idents BK23 / BK30 | PU pcs. |
|---------|-----------|---------------------|-----------|----------|-------------------|---------------|------------------------------|---------|
| KM 6/15 | 86321030 | White / Transparent | 15 | 6 | KS 4/x | 4 x 15 | 6 / 5 | 1000 |
| KM 6/18 | 86321032 | White / Transparent | 18 | 6 | KS 4/x | 4 x 18 | 7 / 6 | 1000 |
| KM 6/21 | 86321034 | White / Transparent | 21 | 6 | KS 4/x | 4 x 21 | 9 / 7 | 1000 |
| KM 6/27 | 86321036 | White / Transparent | 27 | 6 | KS 4/x | 4 x 27 | 11 / 9 | 1000 |

Material properties



Polyvinyl chloride (PVC)

Thermal properties



Temperature / temperature range

-40 °C - 60 °C

Fire properties



Fire classification

V0



KM 6

Classification

ETIM 9: EC000761
ECLASS 14: 27281101
UNSPSC 26.0801: 39131504

Assembly method



Snap-fit system
