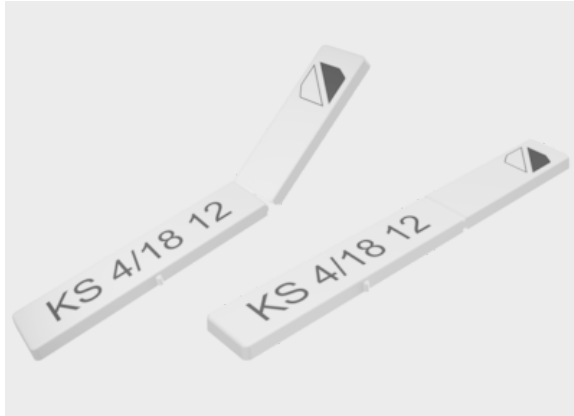




KS label plate (single-line/divisible)

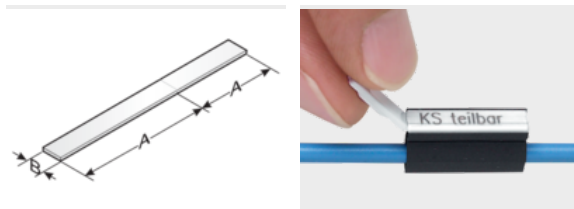


Product information

High-quality, halogen-free, separable label plate. The KS 4/x label is used with sleeves KT, KTH, KTHQ or holders KM, KMH, KMHQ or KTN on wires, cables, lines or conduits.

- Available in different colors
 - KS 4/18-12 with separable tear-off for connection information
 - KS 4/30-70 with individual tear-off for connection information
- Only the long mat version labels are to be used with the mp-LM laser series.

Information, conformities and approvals



Article	Order No.	Color	RAL equiv.	Label size (A x B) mm	Printable area mm	Number of characters / lines	Quantity per frame	Software Article	Base plate	PU pcs.
---------	-----------	-------	------------	-----------------------	-------------------	------------------------------	--------------------	------------------	------------	---------

Label length 30 mm (divided at 18 mm), long mat version (L)

KS 4/18-12 L	86362048	White	9016	4 x 30	4 x 30	16 / 1	34	467	GP3	1020
KS 4/18-12 L	86362050	Yellow	1018	4 x 30	4 x 30	16 / 1	34	468	GP3	1020
KS 4/18-12 L	86362052	Red	2012	4 x 30	4 x 30	16 / 1	34	469	GP3	1020
KS 4/18-12 L	86362054	Green	6018	4 x 30	4 x 30	16 / 1	34	470	GP3	1020
KS 4/18-12 L	86362056	Blue	5012	4 x 30	4 x 30	16 / 1	34	471	GP3	1020

Label length 70 mm (divided at 30/40/50/60 mm)

KS 4/30-70	86361070	White	9016	4 x 70	4 x 70	38 / 1	18	10	GP3	324
KS 4/30-70	86361071	Yellow	1018	4 x 70	4 x 70	38 / 1	18	105	GP3	324



KS label plate (single-line/divisible)

Material properties



Polycarbonate (PC)

Thermal properties



Temperature / temperature range

-40 °C - 130 °C

Fire properties



Fire classification

V0

Technical information



Halogen-free

Classification

ETIM 9: EC001530
ECLASS 14: 27281102
UNSPSC 26.0801: 39131504

General technical data



Assembly method

1010011000000

Assembly method



Sleeve system



Cable tie system with sleeves



Clamping system



Self-clamping system

Labelling technology



Plotter



KS label plate (single-line/divisible)

Labelling technology



Laser



Inkjet