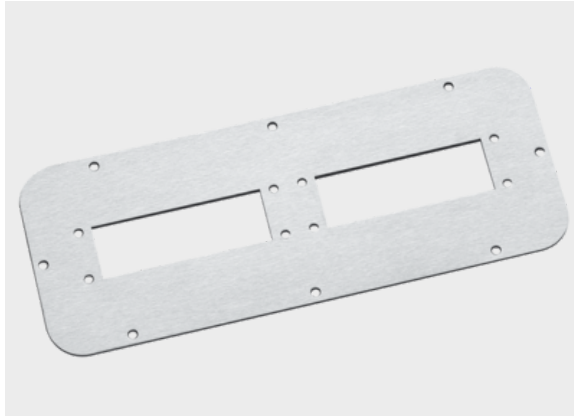




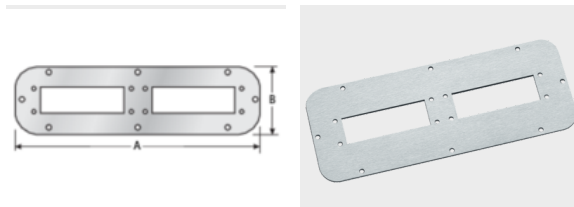
Adapter plate Ensto



Product information

The Ensto adapter plates can be directly mounted into the prefabricated cut-outs from Ensto casings. They serve to retain various Murrplastik cable entry systems. Unused adapter spaces can be closed off using blanking plates. A blade terminal L6.3 is available for grounding the adapter plate. Adapter plate without sealing. The seal is part of the cabinet accessories.

Information, conformities and approvals



Article	Order No.	Color	Holder slots	Cut-out	Plate thickness mm	A mm	B mm	PU pcs.
with 24-pin cut-outs								
KDP 24/AP/EN-KG/1	87663076	Grinded	1	Cubo Type FFUF	2	215	85	1

Material properties



Stainless steel 1.4301 (V2A)

Conformity



RoHS (EC Directive 2011/65/EU)

Approvals and operating permits



GL approval



Adapter plate Ensto

Classification

ETIM 9: EC000211
ECLASS 14: 27142421
UNSPSC 26.0801: 39121312
