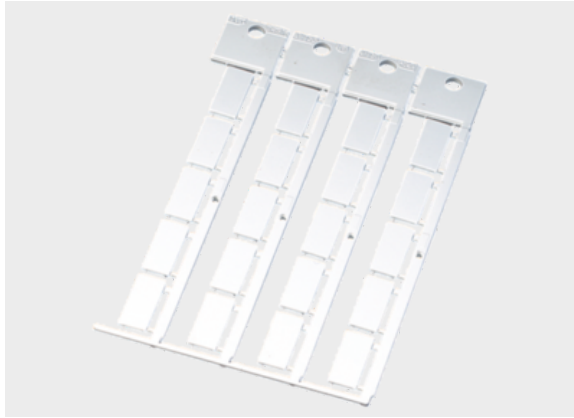




Typ KSF



Product information

KSF - High-quality, halogen-free label plates to snap into devices.

The large printable area at the top provides space for individual project and component reference, without the need to organize additional systems.

Information, conformities and approvals



Article	Order No.	Color	RAL similar	Label size * mm	Printable area* mm	Number of characters / lines	Quantity per frame	Base plate	Software Article	PU pcs.
For devices by Festo, Lumberg, Moeller, Murrelektronik and Pepperl + Fuchs										
KSF 4.5x9	86421046	White	9016	4.5 x 9	4.5 x 9	5 / 1	80	GP4 Single tree adapter 4	176	1040
KSF 10x8	86421050	White	9016	8 x 10	8 x 10	5 / 2	44	none	175	440
KSF 20x9	86421042	White	9016	9 x 20	9 x 20	11 / 2	20	GP4 Single tree adapter 4	174	380
For Festo Remote-I/O-System CPX-AP-I.										
KSF 6x12,5 L	86421076	White	9016	12.5 x 6	12.5 x 6	3 / 3	40	GP5-F Single tree adapter 5	177	600

Material properties



Polycarbonate (PC)

Thermal properties



Temperature / temperature range

-40 °C - 130 °C



Typ KSF

Fire properties



Fire classification

V0

Technical information



Halogen-free

Classification

ETIM 9: EC000761
ECLASS 14: 27281101
UNSPSC 26.0801: 39131504

General technical data



Assembly method

0000000010000

Assembly method



Snap-fit system

Labelling technology



Plotter



Laser



Inkjet