



Accessories - Type HS/F foot



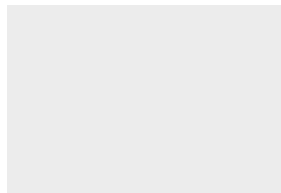
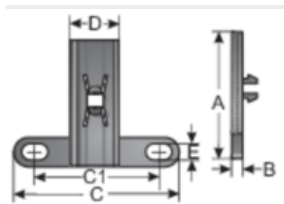
Product information

The accessories for the HS holder are made of specially modified polyamide. The material is halogen, phosphor and cadmium-free. All foot contours are simply snapped onto the HS/H holder. The HS/F variant is the designation for the securing base, which is comparable to the Type UHF holder. The HS/C variant is the designation for the securing base, which is pluggable onto a 35 mm top-hat or C-rail after assembly; the Type HS/S base outline is comparable with the Type USH holder.

The accessories for the HS holder feature the following advantages:

- Flexible system
- Stackable
- Arrangeable in rows

Information, conformities and approvals



| Article | Order No. | Color | Suited for holder | A mm | B mm | D mm | C mm | A1 mm | A2 mm | C1 mm | PU pcs. |
|---------------------|-----------|-------|-------------------|------|------|------|------|-------|-------|-------|---------|
| HS/F 07-09 1) | 83631650 | Black | HS/U 07-09 | 22 | 5 | 18 | 41 | | | 28 | 100 |
| HS/F 11-16 1) | 83631652 | Black | HS/U 11-16 | 28 | 5 | 18 | 41 | | | 28 | 100 |
| HS/F 21-29 1) | 83631654 | Black | HS/U 21-29 | 43 | 5 | 18 | 41 | | | 28 | 50 |
| HS/F 36-49 1) | 83631656 | Black | HS/U 36-48 | 63 | 5 | 18 | 60 | | | 47 | 50 |
| HS/F 11-16 1) 1) | 83631612 | Gray | HS/U 11-16 | 28 | 5 | 18 | 41 | | | 28 | 100 |
| HS/F 21-29 1) 1) | 83631614 | Gray | HS/U 21-29 | 43 | 5 | 18 | 41 | | | 28 | 50 |
| HS/F 36-49 1) 1) | 83631616 | Gray | HS/U 36-48 | 63 | 5 | 18 | 60 | | | 47 | 50 |
| HS/S 07-09 2) | 83631450 | Black | HS/U 07-09 | 22 | 5 | | 43 | 12.5 | | 28 | 100 |
| HS/S 11-16 2) | 83631452 | Black | HS/U 11-16 | 28 | 5 | | 43 | 12.5 | | 28 | 100 |
| HS/S 21-29 2) | 83631454 | Black | HS/U 21-29 | 43 | 5 | | 43 | 12.5 | 12.5 | 28 | 50 |
| HS/S 36-49 2) | 83631456 | Black | HS/U 36-48 | 63 | 5 | | 63 | 25 | 25 | 47 | 50 |
| HS/S 07-09 2) 2) | 83631410 | Gray | HS/U 07-09 | 22 | 5 | | 43 | 12.5 | | 28 | 100 |
| HS/S 11-16 2) 2) | 83631412 | Gray | HS/U 11-16 | 28 | 5 | | 43 | 12.5 | | 28 | 100 |



Accessories - Type HS/F foot

| Article | Order No. | Color | Suited for holder | A mm | B mm | D mm | C mm | A1 mm | A2 mm | C1 mm | PU pcs. |
|------------------|-----------|-------|-------------------|------|------|------|------|-------|-------|-------|---------|
| HS/S 21-29 2) | 83631414 | Gray | HS/U 21-29 | 43 | 5 | | 43 | 12.5 | 12.5 | 28 | 50 |
| HS/S 36-49 2) | 83631416 | Gray | HS/U 36-48 | 63 | 5 | | 63 | 25 | 25 | 47 | 50 |

1) Discontinued product!

2) No stock goods, delivery time and minimum order quantities upon request

1) No stock goods, delivery time and minimum order quantities upon request

2) Discontinued product!

Material properties



mod. polyamide PA 6 II

Thermal properties



Temperature / temperature range -40 °C - 110 °C / short term: 140 °C

Fire properties



Fire classification acc. to UL94: V0 self-extinguishing

Chemical resistances



Resistant to: Alcohol Greases Fuels Mineral oils

Technical information



Halogen-free

Conformity



RoHS (EC Directive 2011/65/EU)

Classification



ETIM 9: EC000368 || eClass 14: 27430315 || UNSPSC: 31162814 ||



Accessories - Type HS/F foot

General information



Made in Germany