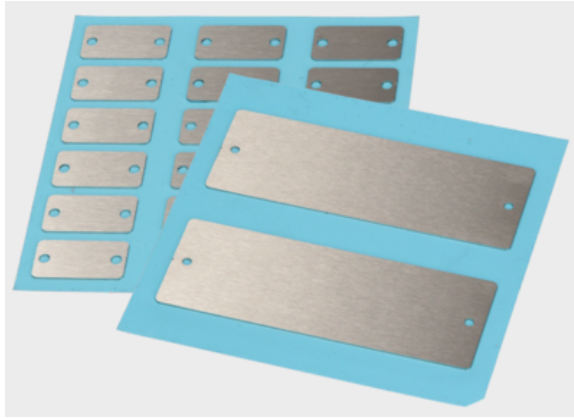


LES Rectangular with radius, 2x hole



Product information

Stainless steel labels made of V4A with a material thickness of 0.8 mm. Fastened with either rivets or screws.

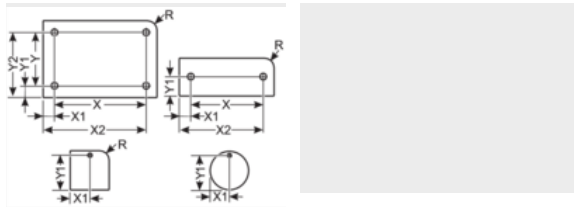
Marking can only be done with a laser printer system (e.g. mp-LM*, pulsar).

Special design for demanding environments like

- Chemical and petrochemical industry
- in the mining industry
- in the ship building industry
- in wind energy plants
- in the food industry

A suction and filter unit is absolutely necessary to comply with legal regulations on health protection.

Information, conformities and approvals



Article	Order No.	Color	Material thickness mm	Printable area mm	No. characters/lines	Number x Holes mm	Quantity per frame	Base plate	Software Article	PU pcs.
---------	-----------	-------	-----------------------	-------------------	----------------------	-------------------	--------------------	------------	------------------	---------

Rectangular design with corner radius and 2 holes

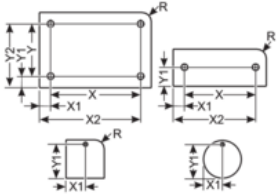
1)	8610340031	Stainless steel brushed	0.8	75 x 25	41 / 7	2x 3.0	4	GP 120x120 mp-LM carrier plate Premium	PHK	24
LES 30x15 R2 HF, 2x3,5MM	8610340000	Stainless steel brushed	0.8	20 x 15	11 / 4	2x 3.5	18		LH1	108
LES 50x15 R2 HF, 2x3,0MM	8610340001	Stainless steel brushed	0.8	36 x 15	20 / 4	2x 3.0	10		LH2	60
LES 50x25 R2 HF, 2x3,0MM	8610340005	Stainless steel brushed	0.8	38 x 25	21 / 7	2x 3.0	8		M01	48
LES 58x12 R2 HF, 2x2,0MM	8610340018	Stainless steel brushed	0.8	48 x 12	26 / 3	2x 2.0	7		NX2	42
LES 65x20 R2 HF, 2x2,0MM	8610340019	Stainless steel brushed	0.8	55 x 20	30 / 5	2x 2.0	5		NX3	30
LES 105x37 R2 HF, 2x3,0MM	8610340002	Stainless steel brushed	0.8	89 x 37	48 / 10	2x 3.0	2		LH7	12
LES 120x20 R2 HF, 2x2,0MM	8610340016	Stainless steel brushed	0.8	108 x 20	60 / 5	2x 2.0	4		NX0	24

1) GP 120x120

1) GP 120x120



LES Rectangular with radius, 2x hole



Article	Order No.	Outside radius R mm	Drill hole pitch X mm	Drill hole position X1 mm	Drill hole position Y1 mm	Drill hole position X2 mm	Radius mm	Hole patterns	Adhesive
LES 30x15 R2 HF, 2x3,5MM 1)	8610340000	2	23.5	3.25	7.5	26.75	2	2x 3.5	Adhesive foil
LES 50x15 R2 HF, 2x3,0MM 1)	8610340001	2	42	4	7.5	46	2	2x 3.0	Adhesive foil
LES 50x25 R2 HF, 2x3,0MM 1)	8610340005		44	3	12.5	47		2x 3.0	Adhesive foil
LES 58x12 R2 HF, 2x2,0MM 1)	8610340018	2	52	3	6	55	2	2x 2.0	Adhesive foil
LES 65x20 R2 HF, 2x2,0MM 1)	8610340019	2	59	3	10	62	2	2x 2.0	Adhesive foil
LES 105x37 R2 HF, 2x3,0MM 1)	8610340002	2	95	5	18.5	100	2	2x 3.0	Adhesive foil
LES 120x20 R2 HF, 2x2,0MM 1)	8610340016	2	112	4	10	116	2	2x 2.0	Adhesive foil

1) GP 120x120

Material properties



V4A stainless steel

Thermal properties



Temperature / temperature range

-80 °C - 500 °C

Fire properties



Fire classification

V0

Classification

ETIM 9: EC001288
ECLASS 14: 27144009
UNSPSC 26.0801: 39131504



LES Rectangular with radius, 2x hole

Assembly method



Riveting system



Screw system

Labelling technology



Laser