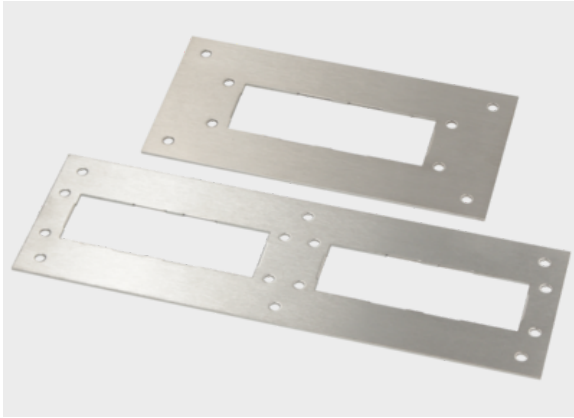




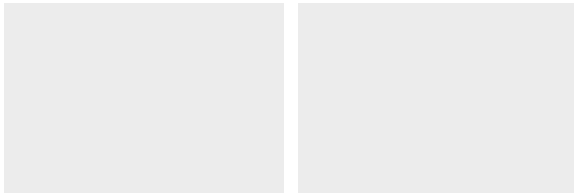
Adapter plate Lohmeier



Product information

The Lohmeier adapter plates can be directly mounted into the prefabricated cut-outs from Lohmeier casings. They are used to accommodate various Murrplastik cable entry systems. Unused adapter spaces can be closed off using blanking plates. A blade terminal L6.3 is available for grounding the adapter plate. Adapter plate come with seal included.

Information, conformities and approvals



Article	Order No.	Color	Holder slots	Cut-out	Plate thickness mm	A mm	B mm	PU pcs.
with 24-pin cut-outs								
KDP 24/AP/LO-BG/2	87663077	Grinded	2 / 24-pole	F300 type BG	2	294	92	1

Material properties



Stainless steel 1.4301 (V2A)

Conformity



RoHS (EC Directive 2011/65/EU)

Approvals and operating permits



GL approval



Adapter plate Lohmeier

Classification

ETIM 9: EC000211
ECLASS 14: 27142421
