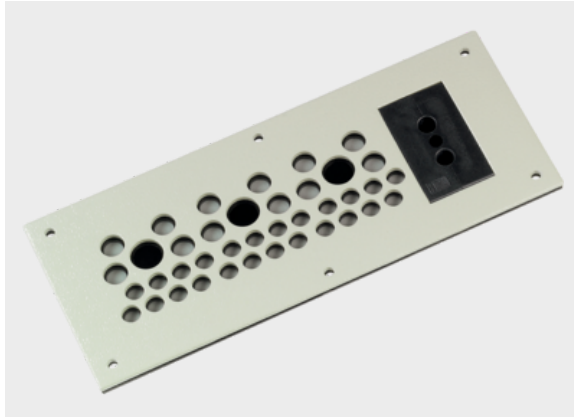




KDP cablequick® Type 90+3 (90x221 mm)

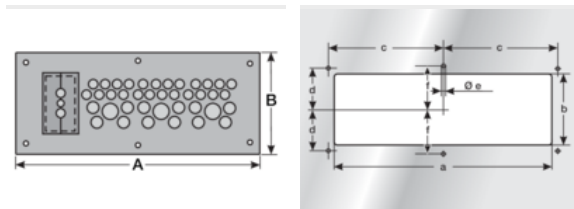


Product information

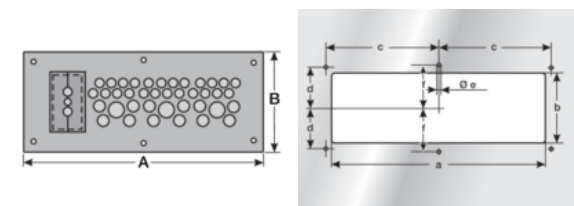
Efficient connection technology for terminal boxes, control cabinets for tool-free introduction of actuators, sensors, measuring and control instrumentation, optoelectronic, pneumatic lines and drive technology into a control panel. The cut-out of the KDP 90/39+3 enables up to three pre-assembled cables with a maximum plug size of 48 x 24 mm to be introduced. The connector grommet is simply inserted into the plate and locked from behind by means of a quick-release lock. The stainless steel version is particularly suitable for applications in the food and chemical industry. Integrated threaded bolts mean that no screws are visible from outside. Mounting set included in delivery.

- Aluminium & Stainless Steel are approved for railway technology (NFPA 130)
- V4A : 1.4571
- ALU : 3.3535
- ST : 1.0037
- Rittal cut-out 2

Information, conformities and approvals



Article	Order No.	Color	No. of openings	Openings Quantity x Ø mm	PU pcs.
KDP 90/39+3 ALU	87663036	Light gray	42	24x 3 mm - 6 mm 12x 4 mm - 8 mm 3x 8 mm - 12 mm	1
KDP 90/39+3 V4A	87663038	Grinded	42	24x 3 mm - 6.2 mm 12x 4 mm - 8 mm 3x 8 mm - 12 mm	1



Article	Order No.	A mm	B mm	a mm	b mm	c mm	d mm	e mm	f mm
KDP 90/39+3 V4A	87663038	221	90	192	62	101	36	4.5	38

Material properties



Seal: NBR/EPDM NBR/EPDM



KDP cablequick® Type 90+3 (90x221 mm)

Thermal properties



Temperature / temperature range

-45 °C - 90 °C

Protection class



Protection class

IP65

Fire properties



Fire classification

HB Housing:
Seal:



Resistant to:

Alcohol
Greases
Fuels
Lyes
Mineral oils
Weak acids

Technical information



Halogen-free



LABS free



According to ISO 4892-2

Conformity



RoHS (EC Directive 2011/65/EU)

Approvals and operating permits



CSA approval



UR Certified



KDP cablequick® Type 90+3 (90x221 mm)

Classification

ETIM 9: EC002624
ECLASS 14: 27182815
