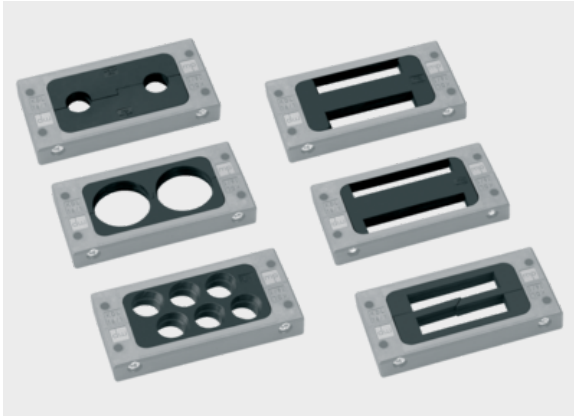




Cable entry grommet type KDT/S 16



Product information

- Cable entry grommet in connection with cable entry system KDL/S 16.
- Individual, customer-specific solutions can be realized
- e.g. insertion of cables in the most varied of shapes or sealing of openings for feed-throughs with metal cables that must be sealed off.
- Thermal stability: -40 °C – +80 °C
- Fire classification: HB
- Material: Thermoplastic rubber
- RoHS compliant
- UV resistant
- Made in Germany

Information, conformities and approvals



Article	Order No.	Color	No. of openings	for Ø mm	For ribbon cable	Version	PU pcs.
KDT/S 2x15	87175444	Black	2	15		two-piece	1
KDT/S 2x24 - 28	87175447	Black	2	24 - 28		two-piece	1
KDT/S 2x28 - 32	87175443	Black	2	28 - 32		two-piece	1
KDT/S 2x33, sw	87175480	Black	2	33		one-piece	1
KDT/S 2x35	87175440	Black	2	35		two-piece	1
KDT/S 6x17.5	87175441	Black	6	17.5		one-piece	1
KDT/S 6x20.3	87175445	Black	6	20.3		one-piece	1
KDT/S 6x12.7 / 2x9.7	87175439	Black	8			one-piece	1
KDT/S 56x13	87175442	Black	2		56 x 13	two-piece	1
KDT/S 56x13 B	87175448	Black	2		56 x 13	one-piece	1
KDT/S 67x12 B	87175446	Black	2		67 x 12	one-piece	1
KDT/S 67x12 C	87175449	Black	2		67 x 12	two-piece	1
KDT/S Blind	87175437	Black				one-piece	1



Cable entry grommet type KDT/S 16

Material properties



Thermoplastic rubber

Thermal properties



Temperature / temperature range

-40 °C – 80 °C

Fire properties



Fire classification

HB

Technical information



According to ISO 4892-2

Conformity



RoHS (EC Directive 2011/65/EU)

Classification

ETIM 9: EC002624

ECLASS 14: 27182815

General information



Made in Germany