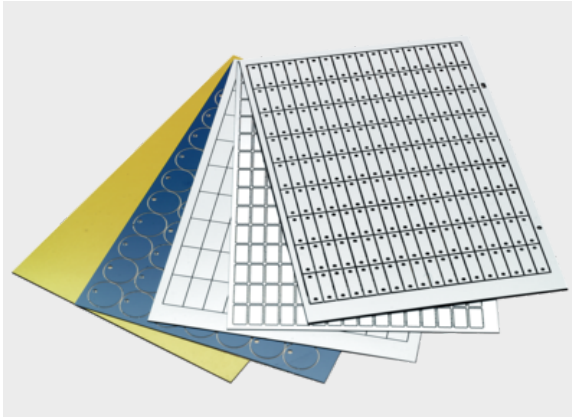


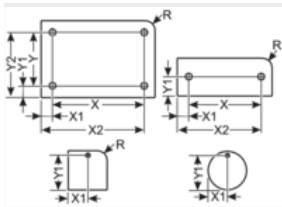
## DM Rectangular with radius, 4x oblong hole



### Product information

- Duomatt is a double-layer material with an UV resistant colored outer layer for marking with a Murrplastik engraving or plotter system.
- Available in various color combinations
- Three different carrier materials available
- Different geometries and holes
- UV resistant outer layer
- Material thickness 0.8 mm or 1.5 mm
- Other sizes available on request

### Information, conformities and approvals

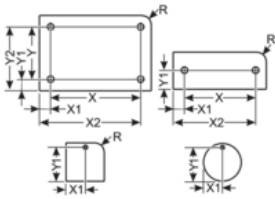


Article	Order No.	Color	Label size mm	Number x Holes mm	Material thickness mm	Quantity per mat	Software Article	PU pcs.
<b>Corner radius 2 mm; with adhesive foil</b>								
DM 12x60 R2 HF, 4x (2x4MM) 1)	8601146008	Yellow / Black	12 x 60	4x (2,0x4,0)	0.8	63	393	63
DM 12x60 R2 HF, 4x (2x4MM) 1)	8601146016	Siemens silver / Black	12 x 60	4x (2,0x4,0)	1.5	63	5J	63
DM 12x60 R2 HF, 4x (2x4MM) 1)	8601446014	Siemens silver / Black	12 x 60	4x (2,0x4,0)	0.8	69	Z98	69
DM 12x60 R2 HF, 4x (2x4MM) 1)	8601146007	White / Black	12 x 60	4x (2,0x4,0)	1.5	63	6H	63
DM 130x30 R2 HF, 4x (4x2MM) 1)	8601146017	White / Black	130 x 30	4x (4,0x2,0)	0.8	10	6R	10
DM 130x30 R2 HF, 4x (4x2MM) 1)	8601146018	White / Black	130 x 30	4x (4,0x2,0)	1.5	10	6Q	10
DM 40x12 R2 HF, 4x (4x2MM) 1)	8601146011	White / Black	40 x 12	4x (4,0x2,0)	0.8	91	174	91
DM 53x12 R2 HF, 4x (5x2,5MM) 1)	8601446015	Blue / White	53 x 12	4x (5,0x2,5)	1.5	75	A1F	75
DM 53x12 R2 HF, 4x (5x2,5MM) 1)	8601146015	White / Black	53 x 12	4x (5,0x2,5)	1.5	75	4U	65
DM° 12x60 R2 HF, 4x (2x4MM) 1)	8601146005	White / Black	12 x 60	4x (2,0x4,0)	0.8	63	428	63



## DM Rectangular with radius, 4x oblong hole

Article	Order No.	Color	Label size mm	Number x Holes mm	Material thickness mm	Quantity per mat	Software Article	PU pcs.
<b>Corner radius 2 mm; with self-adhesive foil</b>								
DM 12x60 R2 SK, 4x (2x4MM) 1)	8601140003	Blue / White	12 x 60	4x (2,0x4,0)	0.8	63	929	63
DM 12x60 R2 SK, 4x (2x4MM) 1)	8601140002	Yellow / Black	12 x 60	4x (2,0x4,0)	0.8	63	930	63
<b>Corner radius 5 mm; with adhesive foil</b>								
DM 25x90 R5 HF, 4x (10x4MM) 1)	8601146013	Red / White	25 x 90	4x (10,0x4,0)	0.8	20	1J	20
DM 95x20 R5 HF, 4x (3.6MM) 1)	8601446011	White / Black	95 x 20	4x (3,0x6,0)	1.5	27	J67	27
1) Other sizes available on request								
1) Other sizes available on request								



Article	Order No.	Drill hole pitch X mm	Drill hole pitch Y mm	Drill hole position X1 mm	Drill hole position Y1 mm	Drill hole position X2 mm	Drill hole position Y2 mm
DM 12x60 R2 HF, 4x (2x4MM) 1)	8601146008	6	52	3	4	9	56
DM 12x60 R2 HF, 4x (2x4MM) 1)	8601146016	6	52	3	4	9	56
DM 12x60 R2 HF, 4x (2x4MM) 1)	8601446014	6	52	3	4	9	56
DM 12x60 R2 HF, 4x (2x4MM) 1)	8601146007	6	52	3	4	9	56
DM 130x30 R2 HF, 4x (4x2MM) 1)	8601146017	120	20	5	5	125	25
DM 130x30 R2 HF, 4x (4x2MM) 1)	8601146018	120	20	5	5	125	25
DM 40x12 R2 HF, 4x (4x2MM) 1)	8601146011	33	7	3.5	2.5	36.5	9.5
DM 53x12 R2 HF, 4x (5x2.5MM) 1)	8601446015	40	5.5	6.5	3.25	46.5	8.75
DM 53x12 R2 HF, 4x (5x2.5MM) 1)	8601146015	40	5.5	6.5	3.25	46.5	8.75
DM° 12x60 R2 HF, 4x (2x4MM) 1)	8601146005	6	52	3	4	9	56



## DM Rectangular with radius, 4x oblong hole

Article	Order No.	Drill hole pitch X mm	Drill hole pitch Y mm	Drill hole position X1 mm	Drill hole position Y1 mm	Drill hole position X2 mm	Drill hole position Y2 mm
<b>Corner radius 2 mm; with self-adhesive foil</b>							
DM 12x60 R2 SK, 4x (2x4MM) 1)	8601140003	6	52	3	4	9	56
DM 12x60 R2 SK, 4x (2x4MM) 1)	8601140002	6	52	3	4	9	56
<b>Corner radius 5 mm; with adhesive foil</b>							
DM 25x90 R5 HF, 4x (10x4MM) 1)	8601146013	11	70	7	10	18	80
DM 95x20 R5 HF, 4x (3.6MM) 1)	8601446011	83	12	6	4	89	16

1) Other sizes available on request

### Adhesive properties



467  
5016SK adhesive film with adhesive  
SKS adhesive film with foam adhesive

### Thermal properties



Temperature / temperature range  
-30 °C - 80 °C

### Classification

ETIM 9: EC001530  
ECLASS 14: —  
UNSPSC 26.0801: 39131504

### General technical data



Assembly method  
00000001Label glued into place 0001Mounting the label with screws 0

### Assembly method



Adhesive system



Screw system

### Labelling technology



Plotter



---

## DM Rectangular with radius, 4x oblong hole

---

### Labelling technology



Engraving

---