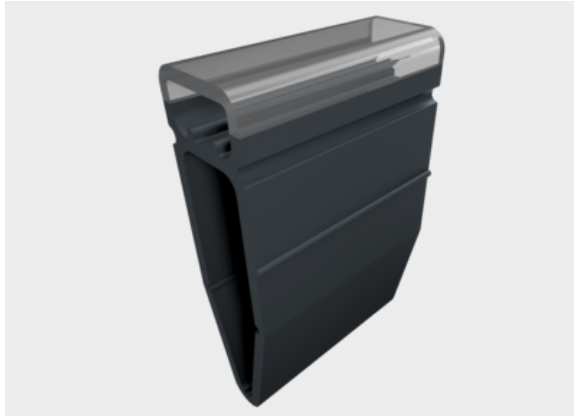




KTH/Q label sleeve (halogen-free / high packing density)



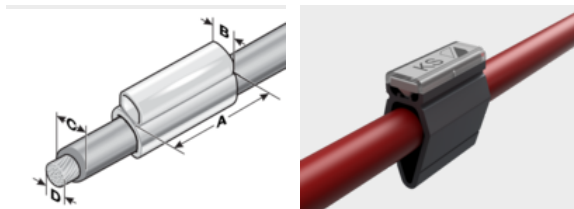
Product information

High-quality, halogen-free two-part label sleeve for extreme demands. The sleeve geometry causes a minimum increase in cable diameter. The trapezoidal design makes for rapid and simple installation.

KTH/Q label sleeves hold the type KS labels.

- Wire cross section from 0.14 – 240 mm²
- Available in various lengths

Information, conformities and approvals



Article	Order No.	Area of application from - to Ø mm (C)	Wire cross section* from - to mm ² (D)	Recommended Label	PU pcs.
12 mm sleeve length (A), single line marking					
KTH/Q 0/12	86222808	0.8 - 1.5	0.5	KS 4/12 x	2000
KTH/Q 1/12	86222810	1.5 - 2.3	0.5	KS 4/12 x	2000
KTH/Q 1.5/12	86222811	1.6 - 3.2	0.5 - 0.75	KS 4/12 x	2000
KTH/Q 2/12	86222812	2.2 - 4.5	0.75 - 2.5	KS 4/12 x	2000
KTH/Q 3/12	86222814	3.7 - 5.9	2.5 - 6	KS 4/12 x	1000
KTH/Q 4/12	86222817	5.5 - 10	10 - 25	KS 4/12 x	1000
KTH/Q 5/12	86222818	8 - 12	25 - 35	KS 4/12 x	500
18 mm sleeve length (A), single line marking					
KTH/Q 0/18	86223008	0.8 - 1.5	0.5	KS 4/18 x	2000
KTH/Q 1/18	86223010	1.5 - 2.3	0.5	KS 4/18 x	2000
KTH/Q 1.5/18	86223011	1.6 - 3.2	0.5 - 0.75	KS 4/18 x	2000



KTH/Q label sleeve (halogen-free / high packing density)

Article	Order No.	Area of application from - to Ø mm (C)	Wire cross section* from - to mm ² (D)	Recommended Label	PU pcs.
KTH/Q 2/18	86223012	2.2 - 4.5	0.75 - 2.5	KS 4/18 x	2000
KTH/Q 3/18	86223014	3.7 - 5.9	2.5 - 6	KS 4/18 x	1000
KTH/Q 4/18	86223017	5.5 - 10	10 - 25	KS 4/18 x	1000
KTH/Q 5/18	86223018	8 - 12	25 - 35	KS 4/18 x	500
KTH/Q 6/18	86223020	10 - 14	50	KS 4/18 x	500
KTH/Q 6.5/18	86223021	12 - 18	70 - 95	KS 4/18 x	500
KTH/Q 7/18	86223022	18 - 24	120 - 150	KS 4/18 x	250
KTH/Q 8/18	86223024	23 - 30	185 - 240	KS 4/18 x	250
23 mm sleeve length (A), single line marking					
KTH/Q 0/23	86223208	0.8 - 1.5	0.5	KS 4/23 x	2000
KTH/Q 1/23	86223210	1.5 - 2.3	0.5	KS 4/23 x	2000
KTH/Q 1.5/23	86223211	1.6 - 3.2	0.5 - 0.75	KS 4/23 x	2000
KTH/Q 2/23	86223212	2.2 - 4.5	0.75 - 2.5	KS 4/23 x	2000
KTH/Q 3/23	86223214	3.7 - 5.9	2.5 - 6	KS 4/23 x	1000
KTH/Q 4/23	86223217	5.5 - 10	10 - 25	KS 4/23 x	1000
KTH/Q 5/23	86223218	8 - 12	25 - 35	KS 4/23 x	500
KTH/Q 7/23	86223222	18 - 24	120 - 150	KS 4/23 x	250
KTH/Q 8/23	86223224	23 - 30	185 - 240	KS 4/23 x	250
30 mm sleeve length (A), single line marking					
KTH/Q 0/30	86223408	0.8 - 1.5	0.5	KS 4/30 x	2000
KTH/Q 1/30	86223410	1.5 - 2.3	0.5	KS 4/30 x	2000
KTH/Q 1.5/30	86223411	1.6 - 3.2	0.5 - 0.75	KS 4/30 x	2000
KTH/Q 2/30	86223412	2.2 - 4.5	0.75 - 2.5	KS 4/30 x	2000
KTH/Q 3/30	86223414	3.7 - 5.9	2.5 - 6	KS 4/30 x	1000
KTH/Q 4/30	86223417	5.5 - 10	10 - 25	KS 4/30 x	1000



KTH/Q label sleeve (halogen-free / high packing density)

Article	Order No.	Area of application from - to Ø mm (C)	Wire cross section* from - to mm ² (D)	Recommended Label	PU pcs.
KTH/Q 5/30	86223418	8 - 12	25 - 35	KS 4/30 x	500
KTH/Q 6/30	86223420	10 - 14	50	KS 4/30 x	500
KTH/Q 6.5/30	86223421	12 - 18	70 - 95	KS 4/30 x	500
KTH/Q 7/30	86223422	18 - 24	120 - 150	KS 4/30 x	250
KTH/Q 8/30	86223424	23 - 30	185 - 240	KS 4/30 x	200
30 mm sleeve length (A), notched					
KTH/Q 2/30A	86223484	2.2 - 4.5	0.75 - 2.5	KS 4/30 x	2000

Material properties



Thermoplastic polyurethane (TPU)

Thermal properties



Temperature / temperature range

-40 °C - 100 °C / short term: 160 °C

Fire properties



Fire classification

V0

Technical information



Halogen-free

Approvals and operating permits



EU railway approval

Classification

ETIM 9: EC001530
ECLASS 14: 27281102
UNSPSC 26.0801: 39131504



KTH/Q label sleeve (halogen-free / high packing density)

General technical data



Assembly method

1000000000000

Assembly method



Sleeve system