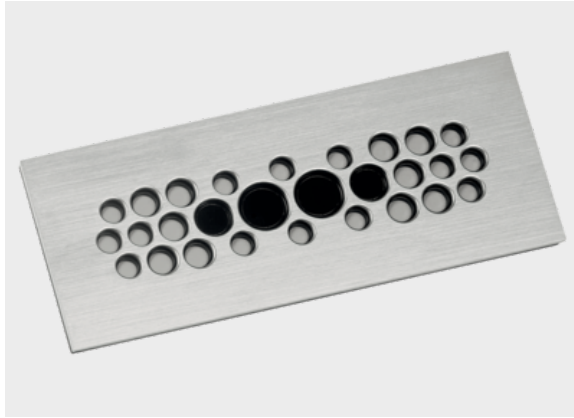




KDP cablequick® Type 90 (90x221 mm)

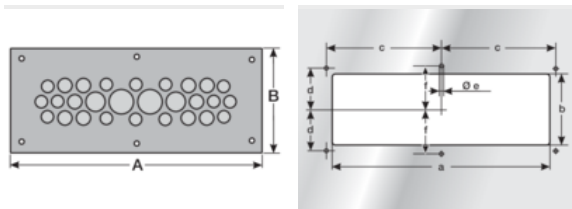


Product information

Efficient connection technology for terminal boxes, control cabinets for tool-free introduction of actuators, sensors, measuring and control instrumentation, optoelectronic, pneumatic lines and drive technology into a control panel. The stainless steel version is particularly suitable for applications in the food and chemical industry. Integrated threaded bolts mean that no screws are visible from outside. Mounting set included in delivery.

- Aluminium & Stainless Steel are approved for railway technology (NFPA 130)
- V4A : 1.4571
- ALU : 3.3535
- ST : 1.0037
- Rittal cut-out 2

Information, conformities and approvals



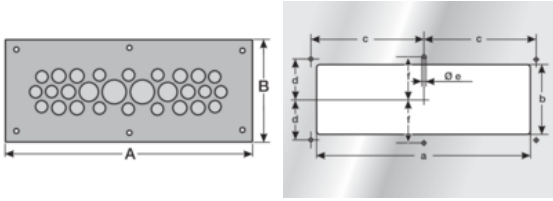
Article	Order No.	Color	No. of openings	Openings Quantity x Ø mm	PU pcs.
KDP 90/18 V4A 1)	87663028	Grinded	18	9x 6 mm – 10 mm 8x 12 mm – 18 mm 1x 18 mm – 25 mm	1
KDP 90/28 ALU	87663032	Light gray	28	14x 4 mm – 8 mm 10x 6 mm – 10 mm 2x 9 mm – 14 mm 2x 12 mm – 18 mm	1
KDP 90/28 V4A	87663034	Grinded	28	14x 4 mm – 8 mm 10x 6 mm – 10 mm 2x 9 mm – 14 mm 2x 12 mm – 18 mm	1
KDP 90/47 ALU 1)	87663037	Light gray	47	14x 3.5 mm – 6.5 mm 28x 4.5 mm – 8.5 mm 4x 7 mm – 11 mm 1x 11 mm – 16 mm	1
KDP 90/47 V4A 1)	87663039	Grinded	47	14x 3.5 mm – 6.5 mm 28x 4.5 mm – 8.5 mm 4x 7 mm – 11 mm 1x 11 mm – 16 mm	1
KDP 90/55 V4A	87663058	Grinded	55	3x 3 mm – 5 mm 32x 3 mm – 6.2 mm 16x 4 mm – 8 mm 4x 8 mm – 12 mm	1

1) no UR-approval

1) no UR-approval



KDP cablequick® Type 90 (90x221 mm)



Article	Order No.	A mm	B mm	a mm	b mm	c mm	d mm	e mm	f mm
KDP 90/28 ALU	87663032	221	90	192	62	101	36	4.5	38
KDP 90/28 V4A	87663034	221	90	192	62	101	36	4.5	38
KDP 90/47 ALU 1)	87663037	221	90	192	62	101	36	4.5	38
KDP 90/47 V4A 1)	87663039	221	90	192	62	101	36	4.5	38
KDP 90/55 V4A	87663058	221	90	192	62	101	36	4.5	38

1) no UR-approval

Material properties



Seal: NBR/EPDM NBR/EPDM

Thermal properties



Temperature / temperature range

-45 °C - 90 °C

Protection class



Protection class

IP65

Fire properties



Fire classification

HB Housing:
Seal:



Resistant to:

Alcohol
Greases
Fuels
Lyes
Mineral oils



KDP cablequick® Type 90 (90x221 mm)

Fire properties

| Weak acids

Technical information



Halogen-free



LABS free



According to ISO 4892-2

Conformity



RoHS (EC Directive 2011/65/EU)

Approvals and operating permits



CSA approval



UR Certified

Classification

ETIM 9: EC002624
ECLASS 14: 27182815
UNSPSC 26.0801: 39121312