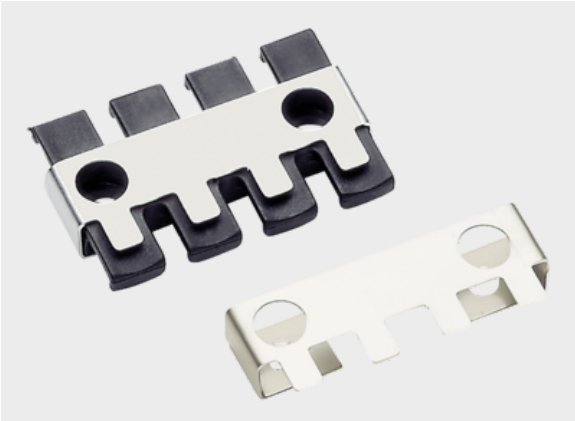




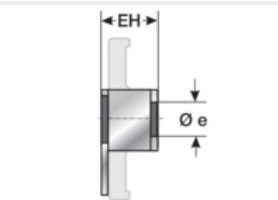
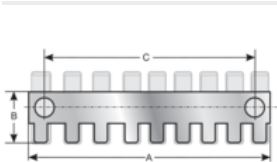
Strain relief type ZL xx-AB



Product information

In conjunction with the ZL strain relief rail, the ZL-AB discharge plate is suitable for discharging interferences which may occur on cable sheaths. ZL strain relief not included in delivery. Please order separately.

Information, conformities and approvals



Article	Order No.	Installation height mm	A mm	B mm	c mm	e mm	PU pcs.
ZL 103-AB/EMV	87701042						1
ZL 39-AB/EMV 1)	87701034	12	41	25	19.5	6.5	1
ZL 60-AB/EMV 1)	87701036	12	62.5	25	43.5	6.5	1
ZL 87-AB/EMV 1)	87701040	12	89	25	68	6.5	1
ZL 140-AB/EMV 1)	87701046	12	142.5	25	121	6.5	1

1) The corresponding ZL strain relief plate is required for the discharge plate.

1) The corresponding ZL strain relief plate is required for the discharge plate.

Material properties



Stainless steel 1.4301

Conformity



RoHS (EC Directive 2011/65/EU)



Strain relief type ZL xx-AB

Approvals and operating permits



GL approval

Classification

ETIM 9: EC002623
ECLASS 14: 27182804