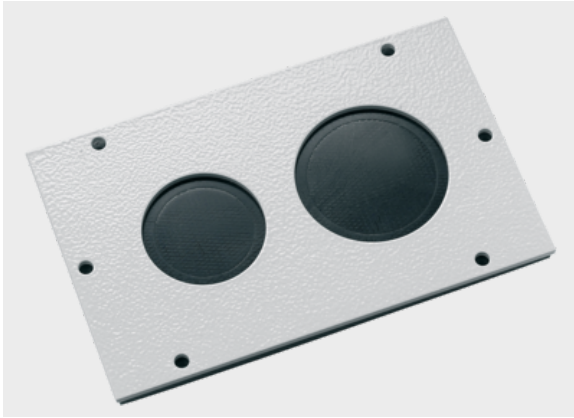




KDP cablequick® Type 120 (120x190 mm)

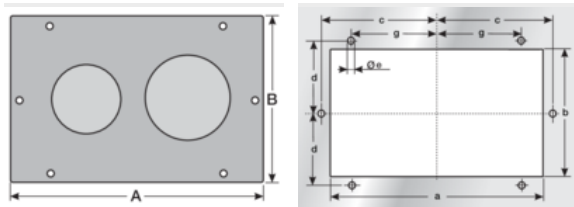


Product information

Tool-less, rational connection technology for the electrical power sector. Performance cables and services are sealed and fed into control cabinets or junction boxes and are supported flexibly. The stainless steel version is particularly suitable for application in the food and chemical areas. Integrated threaded bolts mean that no screws are visible from outside. Mounting set included in delivery.

- Aluminium & Stainless Steel are approved for railway technology (NFPA 130)
- V4A : 1.4571
- ALU : 3.3535
- ST : 1.0037

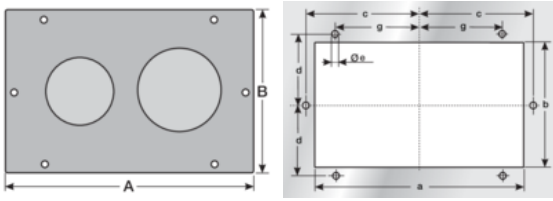
Information, conformities and approvals



Article	Order No.	Color	No. of openings	Openings Quantity x Ø mm	PU pcs.
KDP 120/17 V4A	87663143	Grinded	17	6x 6 mm – 10 mm 4x 9 mm – 14 mm 3x 12 mm – 18 mm 4x 18 mm – 25 mm	1
KDP 120/2 B V4A	87663141	Grinded	2	2x 36 mm – 49 mm	1
KDP 120/2 C V4A	87663142	Grinded	2	1x 18 mm – 36 mm 1x 36 mm – 49 mm	1
KDP 120/2 V4A	87663140	Grinded	2	2x 18 mm – 36 mm	1
KDP 120/35 V4A	87663144	Grinded	35	8x 3.5 mm – 6.5 mm 18x 6 mm – 10 mm 7x 9.6 mm – 15.9 mm 2x 14 mm – 20 mm	1
KDP 120/2 ALU	87663001	Light gray	2	2x 18 mm – 36 mm	1
KDP 120/2 B ALU	87663002	Light gray	2	2x 36 mm – 49 mm	1
KDP 120/2 C ALU	87663003	Light gray	2	1x 18 mm – 36 mm 1x 36 mm – 49 mm	1
KDP 120/17 ALU	87663004	Light gray	17	6x 6 mm – 10 mm 4x 9 mm – 14 mm 3x 12 mm – 18 mm 4x 18 mm – 25 mm	1
KDP 120/35 ALU	87663005	Light gray	35	8x 3.5 mm – 6.5 mm 18x 6 mm – 10 mm 7x 9.6 mm – 15.9 mm 2x 14 mm – 20 mm	1



KDP cablequick® Type 120 (120x190 mm)



Article	Order No.	A mm	B mm	a mm	b mm	c mm	d mm	e mm	g mm
KDP 120/2 B V4A	87663141	190	120	164	94	88	53	5.5	65
KDP 120/2 C V4A	87663142	190	120	164	94	88	53	5.5	65
KDP 120/2 V4A	87663140	190	120	164	94	88	53	5.5	65
KDP 120/35 V4A	87663144	190	120	164	94	88	53	5.5	65
KDP 120/2 ALU	87663001	190	120	164	94	88	53	5.5	65
KDP 120/2 B ALU	87663002	190	120	164	94	88	53	5.5	65
KDP 120/2 C ALU	87663003	190	120	164	94	88	53	5.5	65
KDP 120/17 ALU	87663004	190	120	164	94	88	53	5.5	65
KDP 120/35 ALU	87663005	190	120	164	94	88	53	5.5	65

Material properties



Seal: NBR/EPDM NBR/EPDM

Thermal properties



Temperature / temperature range

-45 °C - 90 °C

Protection class



Protection class

IP65

Fire properties



Fire classification

HB Housing:

Seal:



KDP cablequick® Type 120 (120x190 mm)

Fire properties



Resistant to:

Alcohol
Greases
Fuels
Lyes
Mineral oils
Weak acids

Technical information



Halogen-free



LABS free



According to ISO 4892-2

Conformity



RoHS (EC Directive 2011/65/EU)

Approvals and operating permits



CSA approval

Classification

ETIM 9: EC002624
ECLASS 14: 27182815
UNSPSC 26.0801: 39121312