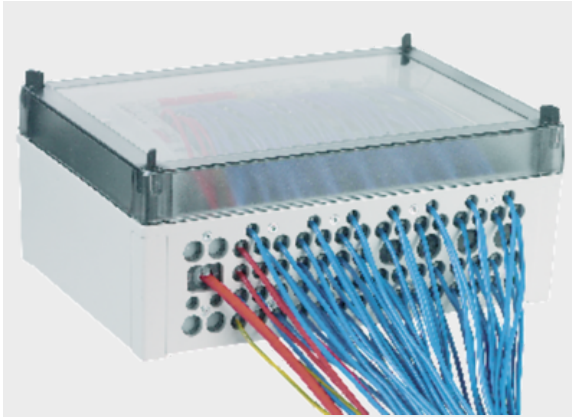




## Bus enclosure



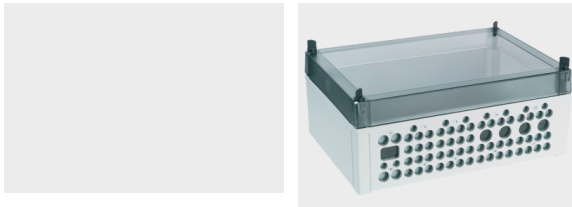
### Product information

Bus housing with integrated cable entry plate. Ideal for applications with WAGO or Beckhoff I/O clamps. Simple and quick mounting, since all required pieces like top hat rail and cable entry plate are already integrated.

- Transparent cover. Indicator lights remain visible even when cover is closed
- High protection class IP65
- Integrated cable entry plate
- Premounted mounting plate with support bar TS 35x15 (EN 50022-35)

### Information, conformities and approvals

RoHS



### Material properties



Polycarbonate (PC)  
NBR/EPDM

### Thermal properties



Temperature / temperature range  
-30 °C - 90 °C

### Protection class



Protection class  
IP65

### Fire properties



Fire classification  
V0 Housing:



## Bus enclosure

### Conformity



RoHS (EC Directive 2011/65/EU)

### Classification

ETIM 9: EC002624  
ECLASS 14: 27182815  
UNSPSC 26.0801: 39121312