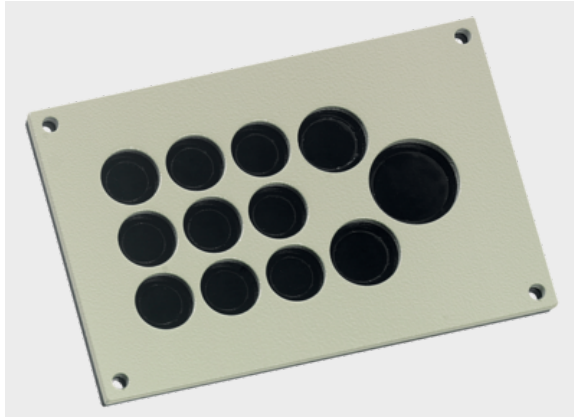




KDP cablequick® Type 105 (105x155 mm)

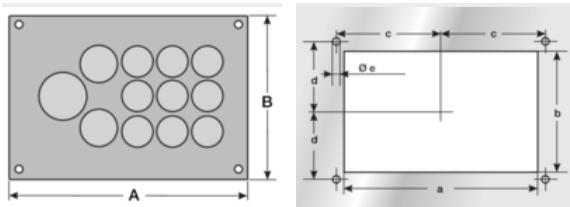


Product information

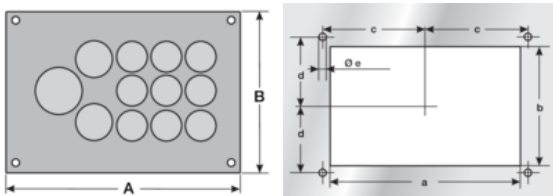
Efficient connection technology for terminal boxes, control cabinets for tool-free introduction of actuators, sensors, measuring and control instrumentation, optoelectronic, pneumatic lines and drive technology into a control panel. KDPs of the product group 105 fits into standard cut-outs for Rittal and Sarel cabinets when combined with adapter plates. These adapter plates can be configured individually. The stainless steel version is particularly suitable for applications in the food and chemical industry. Integrated threaded bolts mean that no screws are visible from outside. Mounting set included in delivery.

- Aluminium & Stainless Steel are approved for railway technology (NFPA 130)
- V4A : 1.4571
- ALU : 3.3535
- ST : 1.0037

Information, conformities and approvals



Article	Order No.	Color	No. of openings	Openings Quantity x Ø mm	PU pcs.
KDP 105/12 ALU	87663056	Light gray	12	9x 9 mm - 14 mm 2x 12 mm - 18 mm 1x 18 mm - 25 mm	1
KDP 105/12 V4A	87663057	Grinded	12	9x 9 mm - 14 mm 2x 12 mm - 18 mm 1x 18 mm - 25 mm	1
KDP 105/15 ALU	87663014	Light gray	15	8x 6 mm - 10 mm 4x 9 mm - 16 mm 3x 12 mm - 18 mm	1
KDP 105/15 V4A	87663016	Grinded	15	8x 6 mm - 10 mm 4x 9 mm - 14 mm 3x 12 mm - 18 mm	1
KDP 105/32 ALU	87663010	Light gray	32	16x 3 mm - 5 mm 12x 4 mm - 8 mm 4x 6 mm - 10 mm	1
KDP 105/32 V4A	87663012	Grinded	32	16x 3 mm - 5 mm 12x 4 mm - 8 mm 4x 6 mm - 10 mm	1





KDP cablequick® Type 105 (105x155 mm)

Article	Order No.	A mm	B mm	a mm	b mm	c mm	d mm	e mm
KDP 105/12 V4A	87663057	155	105	132	82	71.5	46.5	5.5
KDP 105/15 ALU	87663014	155	105	132	82	71.5	46.5	5.5
KDP 105/15 V4A	87663016	155	105	132	82	71.5	46.5	5.5
KDP 105/32 ALU	87663010	155	105	132	82	71.5	46.5	5.5
KDP 105/32 V4A	87663012	155	105	132	82	71.5	46.5	5.5

Material properties



Seal: NBR/EPDM NBR/EPDM

Thermal properties



Temperature / temperature range

-45 °C - 90 °C

Protection class



Protection class

IP65

Fire properties



Fire classification

HB Housing:
Seal:



Resistant to:

Alcohol
Greases
Fuels
Lyes
Mineral oils
Weak acids

Technical information



Halogen-free



KDP cablequick® Type 105 (105x155 mm)

Technical information



LABS free



According to ISO 4892-2

Conformity



RoHS (EC Directive 2011/65/EU)

Approvals and operating permits



CSA approval



UR Certified

Classification

ETIM 9: EC002624
ECLASS 14: 27182815