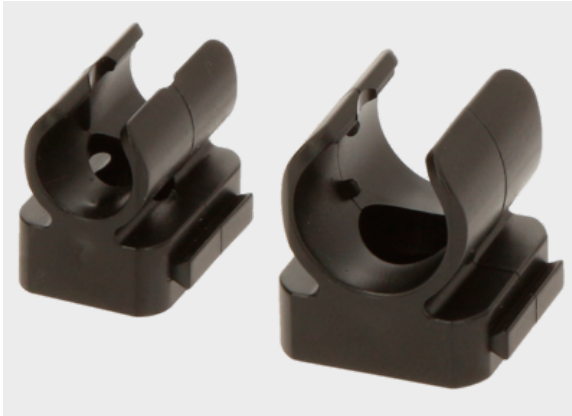




Plug holder type STH

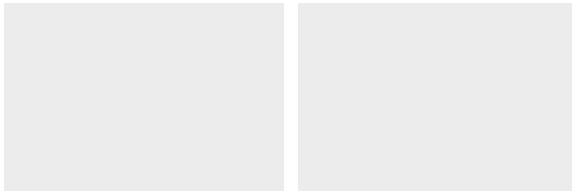


Product information

The plug holder type STH is used to attach industrial connectors for sizes M8 and M12.

- Can be mounted with a cylinder screw
- Internal prongs hold the cable in place and prevent it from slipping
- M8 plug for M4 fastening screw
- M12 plug for M5 fastening screw

Information, conformities and approvals



Article	Order No.	Color	L mm	B mm	H mm	PU pcs.
STH M8-4	87681230	Material color	19	15	17	10
STH M12-5	87681232	Material color	19	20	20.8	10

Classification

ETIM 9: EC001855
ECLASS 14: 27060313