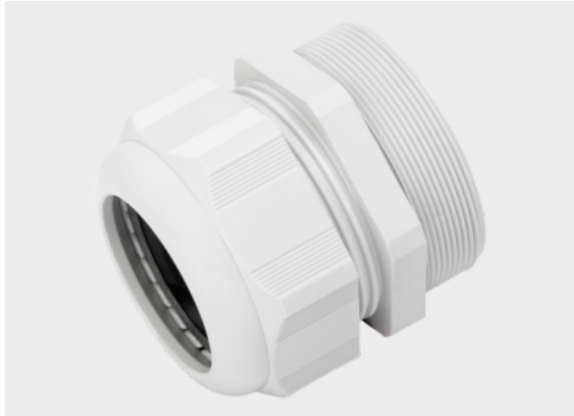




## Type m-seal KV (plastic version)



### Product information

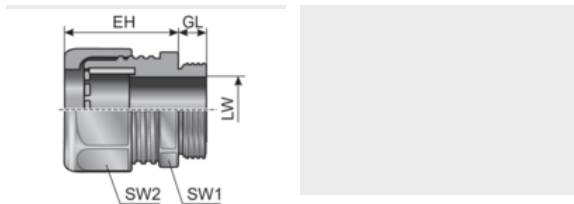
The m-seal cable fittings are manufactured of specially modified Polyamide and the seal is made of NBR.

m-seal cable fittings feature the following advantages:

- Large seal and clamping area
- With integrated strain relief
- High protection class IP 68
- Simple, fast assembly without special tools

\*Suitable locknut must be ordered separately.

### Information, conformities and approvals



| Article                              | Order No. | Color | UV | Connecting thread | Clamping range (LW) mm | EH mm | GL mm | SW 1 / 2 mm | PU pcs. |
|--------------------------------------|-----------|-------|----|-------------------|------------------------|-------|-------|-------------|---------|
| m-seal KV M12x1,5<br>3,0-6,5<br>1)   | 84181250  | Black | ✓  | M12x1,5           | 3 - 6.5                | 22    | 6     | 15          | 100     |
| m-seal KV M16x1,5<br>4,0-8,0<br>1)   | 84181252  | Black | ✓  | M16x1,5           | 4 - 8                  | 25    | 8     | 19          | 50      |
| m-seal KV M20x1,5<br>6,0-12,0<br>2)  | 84181254  | Black | ✓  | M20x1,5           | 6 - 12                 | 29    | 10    | 24          | 50      |
| m-seal KV M25x1,5<br>11,0-17,0<br>2) | 84181256  | Black | ✓  | M25x1,5           | 11 - 17                | 33    | 8     | 29          | 50      |
| m-seal KV M32x1,5<br>15,0-21,0<br>2) | 84181258  | Black | ✓  | M32x1,5           | 15 - 21                | 39    | 10    | 36          | 25      |
| m-seal KV M40x1,5<br>19,0-28,0<br>2) | 84181260  | Black | ✓  | M40x1,5           | 19 - 28                | 44    | 10    | 46          | 20      |
| m-seal KV M50x1,5<br>30,0-38,0<br>2) | 84181262  | Black | ✓  | M50x1,5           | 30 - 38                | 49    | 18    | 60          | 10      |
| m-seal KV M63x1,5<br>34,0-44,0<br>2) | 84181264  | Black | ✓  | M63x1,5           | 34 - 44                | 49    | 18    | 65          | 10      |
| m-seal KV M12x1,5<br>3,0-6,5<br>1)   | 84181200  | Gray  | ✗  | M12x1,5           | 3 - 6.5                | 22    | 6     | 15          | 100     |
| m-seal KV M16x1,5<br>4,0-8,0<br>1)   | 84181202  | Gray  | ✗  | M16x1,5           | 4 - 8                  | 25    | 8     | 19          | 50      |
| m-seal KV M20x1,5<br>6,0-12,0<br>2)  | 84181204  | Gray  | ✗  | M20x1,5           | 6 - 12                 | 29    | 10    | 24          | 50      |



## Type m-seal KV (plastic version)

| Article                              | Order No. | Color | UV | Connecting thread | Clamping range (LW) mm | EH mm | GL mm | SW 1 / 2 mm | PU pcs. |
|--------------------------------------|-----------|-------|----|-------------------|------------------------|-------|-------|-------------|---------|
| m-seal KV M25x1,5<br>11,0-17,0<br>2) | 84181206  | Gray  | ✗  | M25x1,5           | 11 - 17                | 33    | 8     | 29          | 50      |
| m-seal KV M32x1,5<br>15,0-21,0<br>2) | 84181208  | Gray  | ✗  | M32x1,5           | 15 - 21                | 39    | 10    | 36          | 25      |
| m-seal KV M40x1,5<br>19,0-28,0<br>2) | 84181210  | Gray  | ✗  | M40x1,5           | 19 - 28                | 44    | 10    | 46          | 20      |
| m-seal KV M40x1,5<br>22,0-32,0<br>3) | 84181211  | Gray  | ✗  | M40x1,5           | 22 - 32                | 51.5  | 18    | 53          | 10      |
| m-seal KV M50x1,5<br>30,0-38,0<br>2) | 84181212  | Gray  | ✗  | M50x1,5           | 30 - 38                | 49    | 18    | 60          | 10      |
| m-seal KV M63x1,5<br>34,0-44,0<br>2) | 84181214  | Gray  | ✗  | M63x1,5           | 34 - 44                | 49    | 18    | 65          | 10      |
| m-seal KV PG07<br>3,0-6,5<br>1)      | 84181050  | Black | ✓  | PG 07             | 3 - 6.5                | 22    | 8     | 15          | 100     |
| m-seal KV PG09<br>4,0-8,0<br>1)      | 84181052  | Black | ✓  | PG 09             | 4 - 8                  | 25    | 8     | 19          | 50      |
| m-seal KV PG11<br>5,0-10,0<br>4)     | 84181054  | Black | ✓  | PG 11             | 5 - 10                 | 28    | 8     | 22          | 50      |
| m-seal KV PG13.5<br>6,0-12,0<br>2)   | 84181056  | Black | ✓  | PG 13.5           | 6 - 12                 | 29    | 9     | 24          | 50      |
| m-seal KV PG16<br>10,0-14,0<br>5)    | 84181058  | Black | ✓  | PG 16             | 10 - 14                | 31    | 10    | 27          | 50      |
| m-seal KV PG21<br>13,0-18,0<br>2)    | 84181060  | Black | ✓  | PG 21             | 13 - 18                | 35    | 11    | 33          | 25      |
| m-seal KV PG29<br>18,0-25,0<br>5)    | 84181062  | Black | ✓  | PG 29             | 18 - 25                | 40    | 11    | 42          | 20      |
| m-seal KV PG36<br>22,0-32,0<br>2)    | 84181064  | Black | ✓  | PG 36             | 22 - 32                | 49    | 13    | 53          | 10      |
| m-seal KV PG42<br>30,0-38,0<br>2)    | 84181066  | Black | ✓  | PG 42             | 30 - 38                | 49    | 13    | 60          | 10      |
| m-seal KV PG48<br>34,0-44,0<br>2)    | 84181068  | Black | ✓  | PG 48             | 34 - 44                | 49    | 14    | 65          | 10      |
| m-seal KV PG07<br>3,0-6,5<br>1)      | 84181000  | Gray  | ✗  | PG 07             | 3 - 6.5                | 22    | 8     | 15          | 100     |
| m-seal KV PG09<br>4,0-8,0<br>1)      | 84181002  | Gray  | ✗  | PG 09             | 4 - 8                  | 25    | 8     | 19          | 50      |
| m-seal KV PG11<br>5,0-10,0<br>4)     | 84181004  | Gray  | ✗  | PG 11             | 5 - 10                 | 28    | 8     | 22          | 50      |
| m-seal KV PG13.5<br>6,0-12,0<br>2)   | 84181006  | Gray  | ✗  | PG 13.5           | 6 - 12                 | 29    | 9     | 24          | 50      |
| m-seal KV PG16<br>10,0-14,0<br>5)    | 84181008  | Gray  | ✗  | PG 16             | 10 - 14                | 31    | 10    | 27          | 50      |
| m-seal KV PG21<br>13,0-18,0<br>2)    | 84181010  | Gray  | ✗  | PG 21             | 13 - 18                | 35    | 11    | 33          | 25      |



## Type m-seal KV (plastic version)

| Article                           | Order No. | Color | UV | Connecting thread | Clamping range (LW) mm | EH mm | GL mm | SW 1 / 2 mm | PU pcs. |
|-----------------------------------|-----------|-------|----|-------------------|------------------------|-------|-------|-------------|---------|
| m-seal KV PG29<br>18,0-25,0<br>5) | 84181012  | Gray  | ✗  | PG 29             | 18 - 25                | 40    | 11    | 42          | 20      |
| m-seal KV PG36<br>22,0-32,0<br>2) | 84181014  | Gray  | ✗  | PG 36             | 22 - 32                | 49    | 13    | 53          | 10      |
| m-seal KV PG42<br>30,0-38,0<br>2) | 84181016  | Gray  | ✗  | PG 42             | 30 - 38                | 49    | 13    | 60          | 10      |
| m-seal KV PG48<br>34,0-44,0<br>2) | 84181018  | Gray  | ✗  | PG 48             | 34 - 44                | 49    | 14    | 65          | 10      |

1) With UR approval  
 2) With UL approval  
 3) No stock goods, delivery time and minimum order quantities upon request  
 4) With cURus- approval  
 5) With cULus- approval

### Material properties



Fitting: mod. polyamide PA 6  
 Sealing ring: Neoprene (CR) mod. polyamide PA 6  
 Neoprene (CR)

### Thermal properties



Temperature / temperature range  
 -40 °C - 100 °C / short term: 150 °C

### Protection class



Protection class  
 IP68

### Fire properties



Fire classification  
 acc. to UL94: V2 self-extinguishing

### Technical information



Halogen-free

### Conformity



RoHS (EC Directive 2011/65/EU)



## Type m-seal KV (plastic version)

### Approvals and operating permits



CSA approval



UL Type 4x



cULus approval



cURus approval

### Classification

ETIM 9: EC000441  
ECLASS 14: 27140801  
UNSPSC 26.0801: 39131711

### General technical data



00

Recommended torques for  
**murrplastik connectors, corrugated  
conduits and cable fittings**



**holders, lock nuts and reducers**





Recommended torques for

## **murrplastik connectors, corrugated conduits and cable fittings, holders, lock nuts and reducers**

### **Fastening with lock nut**

| <b>Metric thread<br/>EN 60423</b> | <b>Connecting thread and lock nut<br/>made of polyamide</b> | <b>Connection thread and lock nut<br/>made of metal</b> |
|-----------------------------------|---|---|
| M12x1.5                           | 2.0 Nm  | 5.0 Nm  |
| M16x1.5                           | 3.0 Nm  | 7.0 Nm  |
| M20x1.5                           | 4.0 Nm  | 8.0 Nm  |
| M25x1.5                           | 5.0 Nm  | 10.0 Nm   |
| M32x1.5                           | 6.0 Nm  | 12.0 Nm   |
| M40x1.5                           | 11.0 Nm   | 16.0 Nm   |
| M50x1.5                           | 15.0 Nm   | 17.0 Nm   |
| M63x1.5                           | 16.0 Nm   | 18.0 Nm   |

| <b>Pg thread<br/>DIN 40430</b> | <b>Connecting thread and lock nut<br/>made of polyamide</b> | <b>Connection thread and lock nut<br/>made of metal</b> |
|--------------------------------|---|---|
| Pg 7                           | 2.0 Nm  | 4.0 Nm  |
| Pg 9                           | 2.5 Nm  | 4.0 Nm  |
| Pg 11                          | 3.5 Nm  | 6.0 Nm  |
| Pg 13.5                        | 4.0 Nm  | 7.0 Nm  |
| Pg 16                          | 4.5 Nm  | 8.0 Nm  |
| Pg 21                          | 7.5 Nm  | 10.0 Nm   |
| Pg 29                          | 9.0 Nm  | 13.0 Nm   |
| Pg 36                          | 14.0 Nm   | 15.0 Nm   |
| Pg 42                          | 15.0 Nm   | 16.0 Nm   |
| Pg 48                          | 16.0 Nm   | 17.0 Nm   |

### **Please note the following information:**

- The specified tightening torques are maximum values and should not be exceeded.
- The values are based on measurements under normal climate conditions (23°C / 50% rel. humidity). During assembly and operation, the prevailing climatic conditions should also be taken into account, as these can affect the properties of the components.
- Please consider the properties of the other components with which the murrplastik elements are connected.
- Locking and sealing elements tightened with a lower torque provide better long-term strength.



## Recommended torques for **Screws and nuts**

### Torques for screws and nuts

| Thread size | Torques |
|-------------|---------|
| M4          | 2.0 Nm  |
| M5          | 3.0 Nm  |
| M6          | 4.0 Nm  |
| M8          | 10.0 Nm |
| M10         | 15.0 Nm |

### Product examples from our webshop range



**Series m-pro**

on to the product

[shop.murrplastik.de](https://shop.murrplastik.de)



**Series m-fix**

on to the product

[shop.murrplastik.de](https://shop.murrplastik.de)



**UHE Holder**

on to the product

[shop.murrplastik.de](https://shop.murrplastik.de)

More info at

[shop.murrplastik.de](https://shop.murrplastik.de)



**Murrplastik  
Systemtechnik GmbH**

Dieselstraße 10  
71570 Oppenweiler  
Germany

Phone: +49 7191 4820  
info@murrplastik.de

Managing Directors:  
Jürgen Zeltwanger (CEO)  
Gerd Nothdurft (COO)

HRB 271053 Local court Stuttgart  
VAT ID: DE 144 744 122



MP8902834212

**23**



0601HS

More info at

[murrplastik.de](https://murrplastik.de)