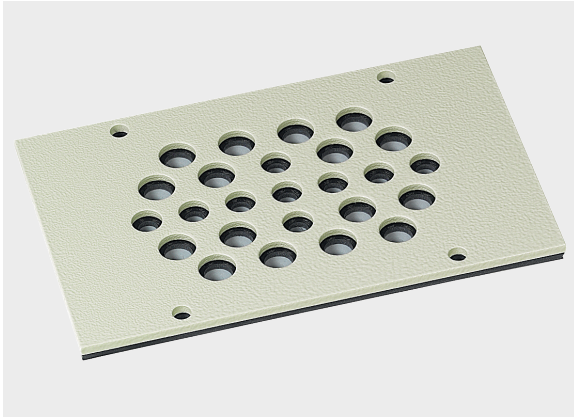




KDP cablequick[®] Type 90 (90x144 mm)

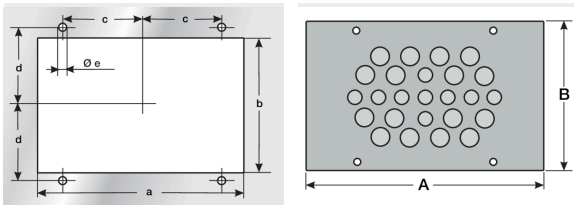


Product information

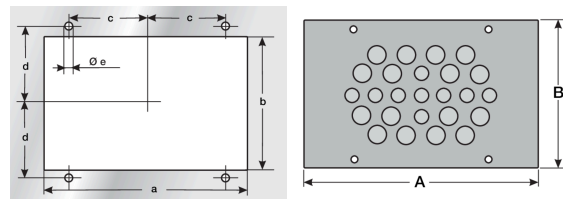
Efficient connection technology for terminal boxes, control cabinets for tool-free introduction of actuators, sensors, measuring and control instrumentation, optoelectronic, pneumatic lines and drive technology into a control panel. The stainless steel version is particularly suitable for application in the food and chemical areas. Integrated threaded bolts mean that no screws are visible from outside. Mounting set included in delivery.

- Aluminium & Stainless Steel are approved for railway technology (NFPA 130)
- V4A : 1.4571
- ALU : 3.3535
- ST : 1.0037

Information, conformities and approvals



Article	Order No.	Color	No. Openings	Openings No. Ø mm	PU pcs.
KDP 90/25 ALU	87663022	Light gray	25	9x 3 mm - 5 mm 16x 4 mm - 1 8 mm	



Article	Order No.	A mm	B mm	a mm	b mm	c mm	d mm	e mm
KDP 90/25 ALU	87663022	144	90	109	71	41	39.5	5.5

Material properties



NBR / EPDM II



KDP cablequick[®] Type 90 (90x144 mm)

Thermal properties



Temperature / temperature range -45 °C – 90 °C

Protection class



Protection class IP65

Fire properties



Fire classification HB Housing: Seal:



Resistant to: Alcohol Greases Fuels Lyes Mineral oils Weak acids

Technical information



LABS free



According to ISO 4892-2

Conformity



RoHS (EC Directive 2011/65/EU)

Approvals and operating permits



CSA approval



Classification



ETIM 9: EC002624 || eClass 14: 27182815 || UNSPSC: 39121312 ||