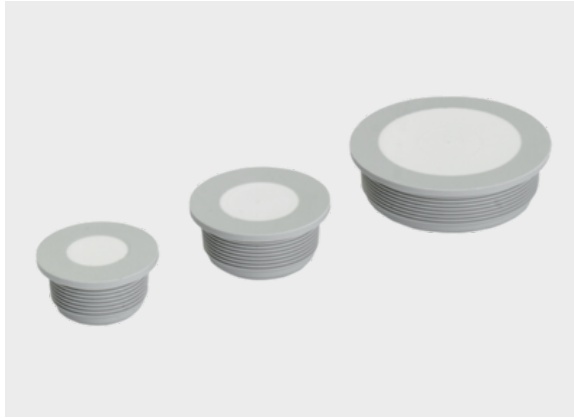




Cable entry membranes type KDM

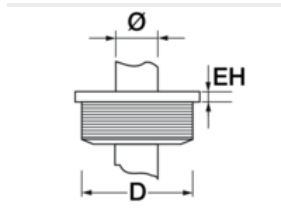
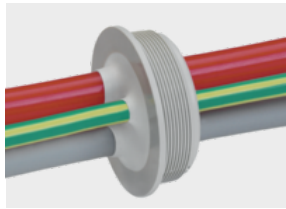


Product information

KDM is a cable entry system for cables without plug connectors. The various sizes fit to metrical cut-outs from M16 to M32.

- Easy no-tool push-fit installation
- Extremely high tightness IP66
- Very flexible diameter ranges (more than one cable option)
- Fits on standard cut-outs of M16 to M32

Information, conformities and approvals



Article	Order No.	Color	for Ø mm	EH mm	D mm	PU pcs.
KDM M16	87401010	Gray	1 - 9	1.5	16.2	50
KDM M20	87401012	Gray	1 - 13	1.5	20.4	50
KDM M25	87401014	Gray	1 - 18	1.5	25.4	50
KDM M32	87401016	Gray	1 - 25	1.5	32.5	50

Material properties



Housing: Polyethylene
Seal: Thermoplastic elastomer (TPE) Polyethylene
Thermoplastic elastomer (TPE)

Thermal properties



Temperature / temperature range
-40 °C - 80 °C

Protection class



Protection class
IP66 from plate thickness of 2.0 mm
IP65 for plate thickness of 1.5-2.0 mm



Cable entry membranes type KDM

Technical information



Halogen-free

Conformity



RoHS (EC Directive 2011/65/EU)

Classification

ETIM 9: EC000879
ECLASS 14: 27144031
UNSPSC 26.0801: 39121719