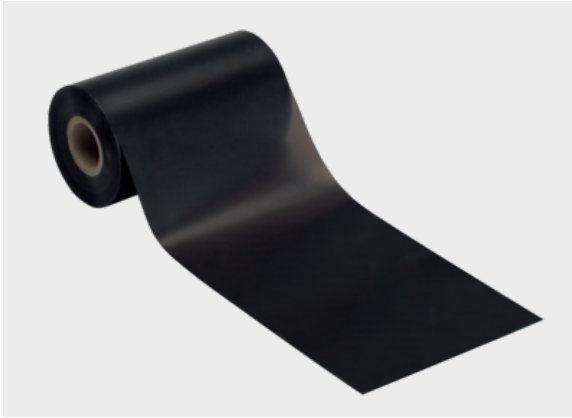




## FH - resin colour printer ribbon



### Product information

The FH resin-based ribbons are ideal for printing on glossy synthetic films. Printing takes place at high temperatures for optimum durability.

#### FH series

The most common field of application for FH resin-based ribbons is that of synthetic labels with a need for high durability.

#### FH+ series

While the FH series already offers good smudge-proof qualities at optimum printing temperature, the FH+ series is smudge- and scratch-proof, and is also resistant to many cleaning agents and oils.

#### FH++ series

Optimum durability is offered by the FH++ series, which is resistant to exposure of most industrial cleaners and oil vapors.

### Information, conformities and approvals



Article	Order No.	Color	Roll width mm	Roll length m	PU pcs.
<b>FH colour ribbons for thermal transfer printers</b>					
FH 40x300 1)	86662200	Black	40	300	300
FH 50x300 1)	86662202	Black	50	300	300
FH 60x300 1)	86662205	Black	60	300	300
FH 70x300 1)	86662208	Black	70	300	300
FH 80x300 1)	86662210	Black	80	300	300
FH 90x300 1)	86662212	Black	90	300	300
FH 110x300 1)	86662214	Black	110	300	300
<b>FH+ colour ribbons for thermal transfer printers</b>					
FH+ 40x300 1)	86662201	Black	40	300	300
FH+ 50x300 1)	86662203	Black	50	300	300
FH+ 55x300 1)	86662204	Black	55	300	300
FH+ 60x300 1)	86662206	Black	60	300	300



## FH - resin colour printer ribbon

Article	Order No.	Color	Roll width mm	Roll length m	PU pcs.
FH+ 70x300 1)	86662209	Black	70	300	300
FH+ 80x300 1)	86662211	Black	80	300	300
FH+ 90x300 1)	86662213	Black	90	300	300
FH+ 110x300 1)	86662215	Black	110	300	300

### FH++ colour ribbons for thermal transfer printers

FH++ 60x300 1)	86662207	Black	60	300	300
FH++ 110x300 1)	86662216	Black	110	300	300

1) Information about packaging unit = roll length (m)

1) Information about packaging unit = roll length (m)

## Classification

ETIM 9: EC001694  
ECLASS 14: 19140690  
UNSPSC 26.0801: 44103100

## Labelling technology



Thermal transfer