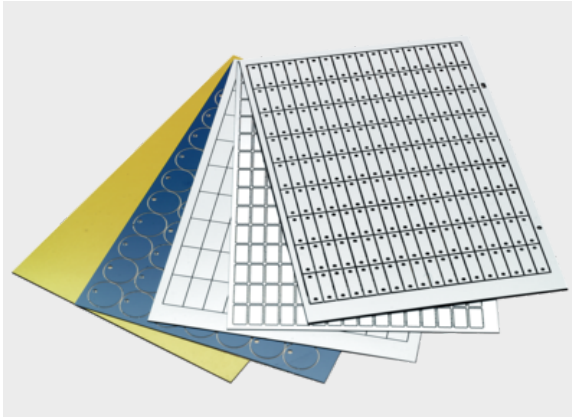


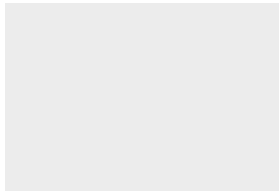
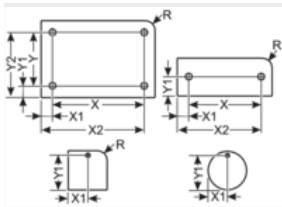
DM Rectangular without radius, 4x hole



Product information

- Duomatt is a double-layer material with an UV resistant colored outer layer for marking with a Murrplastik engraving or plotter system.
- Available in various color combinations
- Three different carrier materials available
- Different geometries and holes
- UV resistant outer layer
- Material thickness 0.8 mm or 1.5 mm
- Other sizes available on request

Information, conformities and approvals



Article	Order No.	Color	Label size mm	Number x Holes mm	Material thickness mm	Quantity per mat	Software Article	PU pcs.
Without corner radius; with self-adhesive foil								
DM 100x60 SK, 4x2,5MM 1)	8601240016	White / Black	100 x 60	4x 2.5	1.5	6	501	6
DM 100x70 SK, 4x3,5MM 1)	8601240024	White / Black	100 x 70	4x 3.5	1.5	4	Z32	4
DM 115x60 SK, 4x4,0MM 1)	8601240008	Siemens silver / Black	115 x 60	4x 4.0	0.8	6	758	6
DM 120x80 SK, 4x3,5MM 1)	8601240011	Siemens silver / Black	120 x 80	4x 3.5	0.8	4	998	4
DM 13x37 SK, 4x3,0MM 1)	8601240003	White / Black	13 x 37	4x 3.0	1.5	105	486	105
DM 142x187 SK, 4x4,0MM 1)	8601240017	Siemens silver / Black	142 x 187	4x 4.0	0.8	2	053	2
DM 145x40 SK, 4x3,6MM 1)	8601240005	White / Black	145 x 40	4x 3.6	0.8	8	733	8
DM 190x90 SK, 4x3,0MM 1)	8601240025	Siemens silver / Black	190 x 90	4x 3.0	0.8	2	Z50	2
DM 290x90 SK, 4x3,5MM 1)	8601240007	Siemens silver / Black	290 x 90	4x 3.5	0.8	2	746	2
DM 40x14 SK, 4x3,0MM 1)	8601240023	Siemens silver / Black	40 x 14	4x 3.0	1.5	84	M77	84
DM 50x50 SK, 4x3,0MM 1)	8601220092	White / Black	50 x 50	4x 3.0	0.8	15	248	15



DM Rectangular without radius, 4x hole

Article	Order No.	Color	Label size mm	Number x Holes mm	Material thickness mm	Quantity per mat	Software Article	PU pcs.
DM 50x60 SK, 4x3,2MM 1)	8601240019	White / Black	50 x 60	4x 3.2	0.8	15	172	15
DM 58x90 SK, 4,4MM 1)	8601240021	Blue / White	58 x 90	4x 4.0	0.8	10	D53	10
DM 70x82 SK, 4x2,6MM 1)	8601240020	Siemens silver / Black	70 x 82	4x 2.6	0.8	8	6G	8
DM 72x20 SK, 4x2,0MM 1)	8601240015	White / Black	72 x 20	4x 2.0	0.8	36	49	36
DM 72x48 SK, 4x3,0MM 1)	8601240022	Siemens silver / Black	72 x 48	4x 3.0	0.8	12	D57	12
DM 72x48 SK, 4x3,0MM 1)	8601240002	Silver / Black	72 x 48	4x 3.0	0.8	12	181	12
DM 72x48 SK, 4x3,0MM 1)	8601240001	White / Black	72 x 48	4x 3.0	0.8	12	B74	12
DM 90x45 SK, 4x3,0MM 1)	8601240018	White / Black	90 x 45	4x 3.0	0.8	12	O68	12
DM 95x58 SK, 4x2,3MM 1)	8601240014	Siemens silver / Black	95 x 58	4x 3.2	1.5	9	407	9
DM 95x58 SK, 4x3,0MM 1)	8601240000	Silver / Black	95 x 58	4x 3.0	0.8	9	B7A	9
DM 95x58 SK, 4x3,0MM 1)	8601240004	White / Black	95 x 58	4x 3.0	0.8	9	B76	9
Without corner radius; with adhesive foil								
DM 100x90 HF, 4x2,0MM 1)	8601246014	Siemens silver / Black	100 x 90	2x 2.0	0.8	4	A26	4
DM 105x52 HF, 4x2,5MM 1)	8601246031	White / Red	105 x 52	4x 2.5	1.5	6	A2F	6
DM 120x10 HF, 4x3,2MM 1)	8601246026	White / Black	120 x 10	4x 3.2	1.5	34	A0C	34
DM 120x20 HF, 4x3,2MM 1)	8601246001	White / Black	120 x 20	4x 3.2	1.5	18	872	18
DM 142x187 HF, 4x4,0MM 1)	8601246003	Siemens silver / Black	142 x 187	4x 4.0	0.8	2	140	2
DM 147x187 HF, 4x4,0MM 1)	8601246009	White / Black	147 x 187	4x 4.0	0.8	2	7E	2
DM 200x110 HF, 4x4,0MM 1)	8601246013	Red / White	200 x 110	4x 4.0	0.8	1	A21	1
DM 20x90 HF, 4x3,2MM 1)	8601246028	Blue / White	20 x 90	4x 3.2	0.8	28	A2C	28
DM 20x90 HF, 4x3,2MM 1)	8601246030	Brown / White	20 x 90	4x 3.2	0.8	28	A5D	28
DM 20x90 HF, 4x3,2MM 1)	8601246029	Green / White	20 x 90	4x 3.2	0.8	28	A3C	28
DM 20x90 HF, 4x3,2MM 1)	8601246027	Red / White	20 x 90	4x 3.2	0.8	28	A1C	28



DM Rectangular without radius, 4x hole

Article	Order No.	Color	Label size mm	Number x Holes mm	Material thickness mm	Quantity per mat	Software Article	PU pcs.
DM 210x40 HF, 4x3,0MM 1)	8601246025	White / Black	210 x 40	4x 3.0	0.8	4	Z25	4
DM 250x140 HF, 4x5,0MM 1)	8601246024	Red / Black	250 x 140	4x 5.0	0.8	1	Z22	1
DM 294x187 HF, 4x4,0MM 1)	8601246010	White / Black	294 x 187	4x 4.0	0.8	1	7F	1
DM 294x187 HF, 4x4,0MM 1)	8601246016	White / Black	294 x 187	4x 4.0	1.5	1	D89	1
DM 30x15 HF, 4x3,0MM 1)	8601246006	White / Black	30 x 15	4x 3.0	0.8	108	287	108
DM 38x34 HF, 4x3,5MM 1)	8601246004	White / Black	38 x 34	4x 3.5	0.8	35	529	35
DM 40x14 HF, 4x3,0MM 1)	8601246023	Siemens silver / Black	40 x 14	4x 3.0	1.5	84	Z10	84
DM 40x80 HF, 4x2,5MM 1)	8601246007	White / Black	40 x 80	4x 2.5	1.5	14	4T	14
DM 50x15 HF, 4x3,2MM 1)	8601246011	Siemens silver / Black	50 x 15	4x 3.2	0.8	60	8Q	60
DM 50x15 HF, 4x3,2MM 1)	8601246022	White / Black	50 x 15	4x 3.2	0.8	60	L41	60
DM 50x80 HF, 4x3,5MM 1)	8601246017	Black / White	50 x 80	4x 3.5	1.5	10	G71	10
DM 55x90 HF, 4x2,2MM 1)	8601246015	Siemens silver / Black	90 x 55	4x 2.2	0.8	10	D13	10
DM 60x150 HF, 4x3,5MM 1)	8601246012	Yellow / Black	60 x 150	4x 3.5	1.5	4	9T	4
DM 95x45 HF, 4x4,0MM 1)	8601246008	White / Black	95 x 45	4x 4.0	0.8	12	7D	12

Without corner radius; with high-strength adhesive foam foil

DM 105x37 SKS, 4x4,5MM 2)	8601242002	Siemens silver / Black	105 x 37	4x 4.5	0.8	10	960	10
DM 105x74 SKS, 4x4,5MM 2)	8601242003	Siemens silver / Black	105 x 74	4x 4.5	0.8	4	971	4
DM 55x160 SKS, 4x2,1MM 2)	8601242001	Siemens silver / Black	55 x 160	4x 2.1	0.8	5	961	5
DM 80x60 SKS, 4x2,6MM 2)	8601242005	Siemens silver / Black	80 x 60	4x 2.6	0.8	9	314	9
DM 80x60 SKS, 4x2,6MM 2)	8601242000	White / Black	80 x 60	4x 2.6	0.8	9	507	9
DM 90x90 SKS, 4x3,2MM 2)	8601242004	White / Black	90 x 90	4x 3.2	0.8	6	A20	6

1) Other sizes available on request

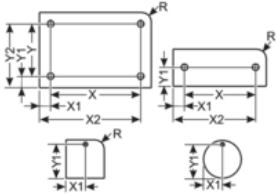
2) Due to the adhesive properties of the SKS film, it can happen that the manufactured signs stick together again after processing and have to be trimmed.

1) Other sizes available on request

2) Due to the adhesive properties of the SKS film, it can happen that the manufactured signs stick together again after processing and have to be trimmed.



DM Rectangular without radius, 4x hole



Article	Order No.	Drill hole pitch X mm	Drill hole pitch Y mm	Drill hole position X1 mm	Drill hole position Y1 mm	Drill hole position X2 mm	Drill hole position Y2 mm
DM 100x60 SK, 4x2,5MM 1)	8601240016	90	50	5	5	95	55
DM 100x70 SK, 4x3,5MM 1)	8601240024	84	54	8	8	92	62
DM 115x60 SK, 4x4,0MM 1)	8601240008	105	50	5	5	110	55
DM 120x80 SK, 4x3,5MM 1)	8601240011	104	64	8	8	112	72
DM 13x37 SK, 4x3,0MM 1)	8601240003	7.5	32	2.75	2.5	10.25	34.5
DM 142x187 SK, 4x4,0MM 1)	8601240017	122	170	10	8.5	132	185.5
DM 145x40 SK, 4x3,6MM 1)	8601240005	129	24	8	8	137	32
DM 190x90 SK, 4x3,0MM 1)	8601240025	180	80	5	5	185	85
DM 290x90 SK, 4x3,5MM 1)	8601240007	280	80	5	5	295	85
DM 40x14 SK, 4x3,0MM 1)	8601240023	33	7	3.5	3.5	36.5	10.5
DM 50x50 SK, 4x3,0MM 1)	8601220092	44	44	3	3	47	47
DM 50x60 SK, 4x3,2MM 1)	8601240019	44	54	3	3	47	57
DM 58x90 SK, 4.4MM 1)	8601240021	48	80	5	5	53	85
DM 70x82 SK, 4x2,6MM 1)	8601240020	62	74	4	4	66	78
DM 72x20 SK, 4x2,0MM 1)	8601240015	64	12	4	4	68	16
DM 72x48 SK, 4x3,0MM 1)	8601240022	65	41	3.5	3.5	68.5	44.5
DM 72x48 SK, 4x3,0MM 1)	8601240002	65	41	3.5	3.5	68.5	44.5
DM 72x48 SK, 4x3,0MM 1)	8601240001	65	41	3.5	3.5	68.5	44.5
DM 90x45 SK, 4x3,0MM 1)	8601240018	78	33	6	6	84	39
DM 95x58 SK, 4x2,3MM 1)	8601240014	85	48	5	5	90	53



DM Rectangular without radius, 4x hole

Article	Order No.	Drill hole pitch X mm	Drill hole pitch Y mm	Drill hole position X1 mm	Drill hole position Y1 mm	Drill hole position X2 mm	Drill hole position Y2 mm
DM 95x58 SK, 4x3,0MM 1)	8601240000	85	48	5	5	90	53
DM 95x58 SK, 4x3,0MM 1)	8601240004	85	48	5	5	90	53
Without corner radius; with adhesive foil							
DM 100x90 HF, 4x2,0MM 1)	8601246014	92	82	4	4	96	86
DM 105x52 HF, 4x2,5MM 1)	8601246031	95	42	5	5	100	47
DM 120x10 HF, 4x3,2MM 1)	8601246026	110	4	5	3	115	7
DM 120x20 HF, 4x3,2MM 1)	8601246001	112	12	4	4	116	16
DM 142x187 HF, 4x4,0MM 1)	8601246003	122	170	10	8.5	132	185.5
DM 147x187 HF, 4x4,0MM 1)	8601246009	137	177	5	5	142	182
DM 200x110 HF, 4x4,0MM 1)	8601246013	180	90	10	10	190	100
DM 20x90 HF, 4x3,2MM 1)	8601246028	10	80	5	5	15	85
DM 20x90 HF, 4x3,2MM 1)	8601246030	10.4	80.4	4.8	4.8	15.2	85.2
DM 20x90 HF, 4x3,2MM 1)	8601246029	10	80	5	5	15	85
DM 20x90 HF, 4x3,2MM 1)	8601246027	10	80	5	5	15	85
DM 210x40 HF, 4x3,0MM 1)	8601246025	194	24	8	8	202	32
DM 250x140 HF, 4x5,0MM 1)	8601246024	230	120	10	10	240	130
DM 294x187 HF, 4x4,0MM 1)	8601246010	284	177	5	5	289	182
DM 294x187 HF, 4x4,0MM 1)	8601246016	282	175	6	6	288	181
DM 30x15 HF, 4x3,0MM 1)	8601246006	24	9	3	3	27	12
DM 38x34 HF, 4x3,5MM 1)	8601246004	28	24	5	5	33	29
DM 40x14 HF, 4x3,0MM 1)	8601246023	33	7	3.5	3.5	36.5	10.5
DM 40x80 HF, 4x2,5MM 1)	8601246007	30	70	5	5	35	75
DM 50x15 HF, 4x3,2MM 1)	8601246011	40.4	5.4	4.8	4.8	45.2	10.2
DM 50x15 HF, 4x3,2MM 1)	8601246022	40.4	5.4	4.8	4.8	45.2	10.2
DM 50x80 HF, 4x3,5MM 1)	8601246017	39.5	69.5	5.25	5.25	44.75	74.75



DM Rectangular without radius, 4x hole

Article	Order No.	Drill hole pitch X mm	Drill hole pitch Y mm	Drill hole position X1 mm	Drill hole position Y1 mm	Drill hole position X2 mm	Drill hole position Y2 mm
DM 55x90 HF, 4x2,2MM 1)	8601246015	80	45	5	5	85	50
DM 60x150 HF, 4x3,5MM 1)	8601246012	46	136	7	7	53	143
DM 95x45 HF, 4x4,0MM 1)	8601246008	85	35	5	5	90	40

Without corner radius; with high-strength adhesive foam foil

DM 105x37 SKS, 4x4.5MM 2)	8601242002	95	27	5	5	100	32
DM 105x74 SKS, 4x4.5MM 2)	8601242003	95	64	5	5	100	69
DM 55x160 SKS, 4x2.1MM 2)	8601242001	49	154	3	3	52	157
DM 80x60 SKS, 4x2,6MM 2)	8601242005	72	52	4	4	76	56
DM 80x60 SKS, 4x2,6MM 2)	8601242000	72	52	4	4	76	56
DM 90x90 SKS, 4x3,2MM 2)	8601242004	80	80	5	5	85	85

1) Other sizes available on request

2) Due to the adhesive properties of the SKS film, it can happen that the manufactured signs stick together again after processing and have to be trimmed.

Adhesive properties



467
5016SK adhesive film with adhesive
SKS adhesive film with foam adhesive

Thermal properties



Temperature / temperature range
-30 °C - 80 °C

Classification

ETIM 9: EC001288
ECLASS 14: 27144009
UNSPSC 26.0801: 39131504

General technical data



Assembly method
00000001Label glued into place 0001Mounting the label with screws 0

Assembly method



Adhesive system



DM Rectangular without radius, 4x hole

Assembly method



Screw system

Labelling technology



Plotter



Engraving