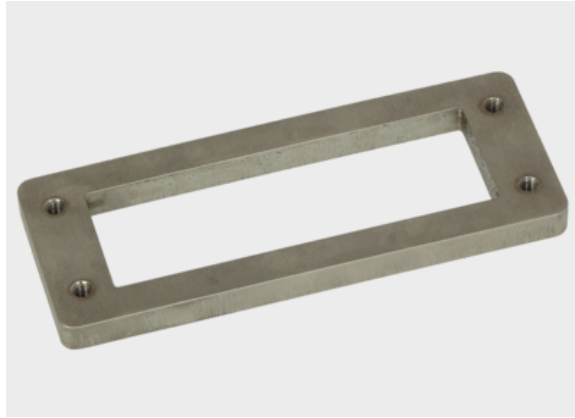




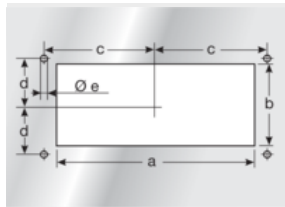
## Reinforced frame type VR-VA



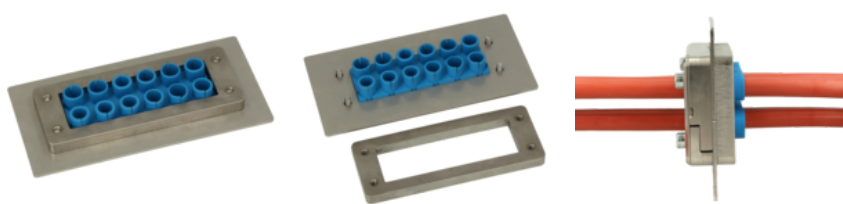
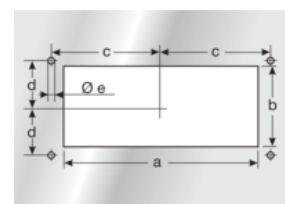
### Product information

The reinforced frame type VR-VA provides higher stability and prevents deformation of the housing wall. in combination with our metal cable entry systems (type KDL/H and KDL/H-VA). The VR-VA is screwed to the inside of the housing with our cable entry systems.

### Information, conformities and approvals



Article	Order No.	Color	PU pcs.
<b>For standard cut-out size 24</b>			
VR-VA 24	87661010	Material color	1



Article	Order No.	Installation height mm	A mm	B mm	C mm	a mm	b mm	c mm	d mm	e mm
VR-VA 24	87661010	10	148	58	10	112	36	65	16	5.5

### Assembly method





## Reinforced frame type VR-VA

### Classification

ETIM 9: EC002624  
ECLASS 14: 27182815

### General information



Made in Germany