

Sealing plug KM



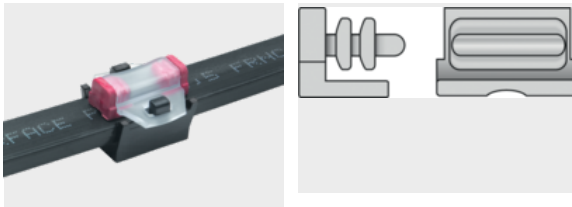
Product information

The KM sealing plugs for closing off the KM and KMH label holders are available in 4 mm, 9 mm and 15 mm width and are watertight.

The seal provides long-term protection of the required labeling throughout the wet areas of the plant.

The sealing plugs are available in a wide variety of own colours in order to identify different media.

Information, conformities and approvals



Article	Order No.	Color	RAL similar	PU pcs.
Construction 4 mm width				
KM 4 Plug	86321214	Yellow	1018	100
KM 4 Plug	86321212	Red	2012	100
KM 4 Plug	86321216	Green	6018	100
KM 4 Plug	86321218	Blue	5012	100
Construction 9 mm width				
KM 9 Plug	86321220	Black	9004	100
KM 9 Plug	86321222	Red	2012	100
KM 9 Plug	86321226	Green	6018	100
KM 9 Plug	86321228	Blue	5012	100
Construction 15 mm width				
KM 15 Plug	86321230	Black	9004	100
KM 15 Plug	86321234	Yellow	1018	100



Sealing plug KM

Article	Order No.	Color	RAL similar	PU pcs.
KM 15 Plug	86321232	Red	2012	100
KM 15 Plug	86321236	Green	6018	100
KM 15 Plug	86321238	Blue	5012	100

Material properties



Thermoplastic elastomer (TPE)

Thermal properties



-40 °C - 100 °C

Fire properties



V0

Classification

ETIM 9: EC001530
ECLASS 14: 27281102
UNSPSC 26.0801: 39131504

General technical data



For labelling in wet areas



For labelling in wet areas