



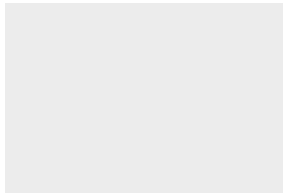
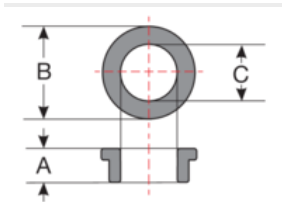
## Insert bushing type ELB



### Product information

The ELB insert bushing can be laid into the strain relief plate type ZL. It prevents cold flow of the plastic at the fixing point during heavy strain or permanent movement.

### Information, conformities and approvals



Article	Order No.	Color	A mm	B mm	C mm	PU pcs.
<b>For ZL39 - 180/8</b>						
ELB/6 insert bushing, VE50	87701051	Material color	6.5	12	6.2	50
<b>For ZL39 - 180/6</b>						
ELB/6	87701050	Material color	6.5	12	6.2	1
<b>For ZL 180/8</b>						
ELB/8 1)	87701060	Material color	6.5	13.4	8.2	1
1) For ZL 180/8 only						
1) For ZL 180/8 only						

### Material properties



Brass



## Insert bushing type ELB

### Classification

ETIM 9: EC002624  
ECLASS 14: 27182815