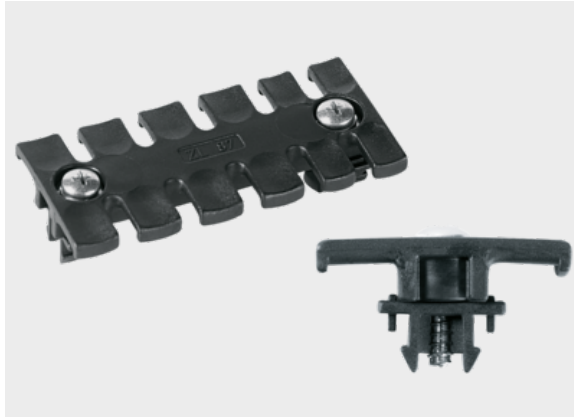




Strain relief type ZLF

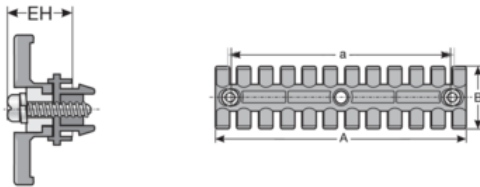


Product information

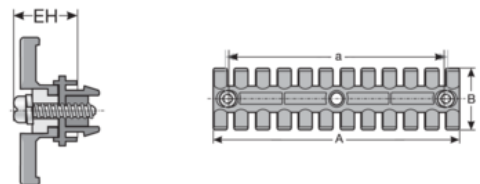
The strain relief plate ZLF is based on the strain relief plate ZL. The fastening clips that are used allow for simply mounting on C-rails with 10 mm slot and a plate thickness of 2.0 mm maximum. The pre-mounted screw in the fastening clip allows the snap-on stand to be splayed and locked.

- Very fast installation
- Orderly routing of the cable
- Simple and effective strain relief through cable ties
- Approved for railway technology (EN 45545-2)

Information, conformities and approvals



Article	Order No.	Color	No. Cables	PU pcs.
ZLF 39	87701410	Black	3	10
ZLF 60	87701412	Black	4	10
ZLF 87	87701414	Black	6	10
ZLF 103	87701416	Black	7	10
ZLF 121	87701418	Black	8	10
ZLF 140	87701420	Black	9	10



Article	Order No.	A mm	a mm	B mm	EH mm
ZLF 60	87701412	59,5	43,5	40	17



Strain relief type ZLF

Article	Order No.	A mm	a mm	B mm	EH mm
ZLF 87	87701414	86.5	68	40	17
ZLF 103	87701416	102.5	84	40	17
ZLF 121	87701418	121	102.5	40	17
ZLF 140	87701420	139.5	121	40	17

Material properties



Polyamide 6.6

Thermal properties



Temperature / temperature range

-45 °C - 125 °C

Fire properties



Fire classification

V0

Technical information



Halogen-free



LABS free



According to ISO 4892-2

Assembly method



Strain relief





Strain relief type ZLF

Conformity



RoHS (EC Directive 2011/65/EU)

Approvals and operating permits



GL approval



EU railway approval

Classification

ETIM 9: EC000322
ECLASS 14: 27400604
UNSPSC 26.0801: 39121719

General information



Made in Germany