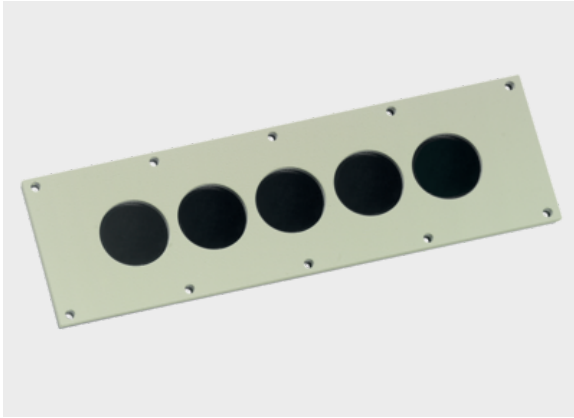




## KDP cablequick® Type 90 (90x294 mm)



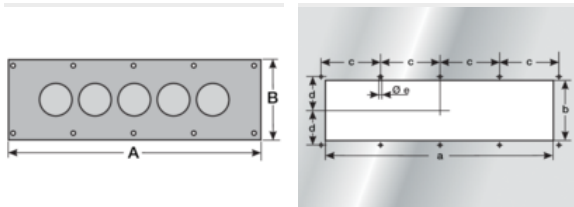
### Product information

Cable entry plate for insertion of power cables. Ideally suited for roof or floor openings at control cabinets.

The stainless steel version is particularly suitable for application in the food and chemical areas. Integrated threaded bolts mean that no screws are visible from outside. Mounting set included in delivery.

- Aluminium & Stainless Steel are approved for railway technology (NFPA 130)
- V4A : 1.4571
- ALU : 3.3535
- ST : 1.0037

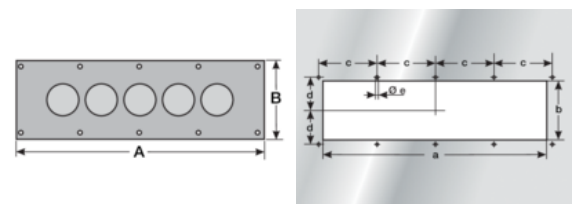
### Information, conformities and approvals



Article	Order No.	Color	No. of openings	Openings Quantity x Ø mm	PU pcs.
KDP 90/5 ALU 1)	87663029	Light gray	5	5x 16 mm - 28 mm	1

1) Maximum cable lug width of power cables is 32.0 mm

1) Maximum cable lug width of power cables is 32.0 mm



Article	Order No.	A mm	B mm	a mm	b mm	c mm	d mm	e mm
1) Maximum cable lug width of power cables is 32.0 mm								

### Material properties



Seal: NBR/EPDM NBR/EPDM



## KDP cablequick® Type 90 (90x294 mm)

### Thermal properties



Temperature / temperature range

-45 °C - 90 °C

### Protection class



Protection class

IP65

### Fire properties



Fire classification

HB Housing:  
Seal:



Resistant to:

Alcohol  
Greases  
Fuels  
Lyes  
Mineral oils  
Weak acids

### Technical information



Halogen-free



LABS free



According to ISO 4892-2

### Conformity



RoHS (EC Directive 2011/65/EU)

### Approvals and operating permits



CSA approval



UR Certified



---

## KDP cablequick<sup>®</sup> Type 90 (90x294 mm)

---

### Classification

ETIM 9: EC002624  
ECLASS 14: 27182815  
UNSPSC 26.0801: 39121312

---