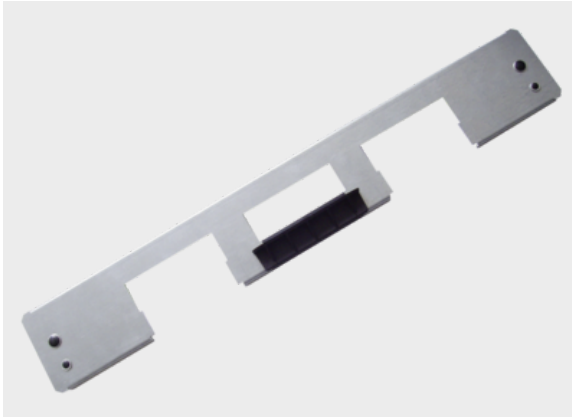




Control cabinet floor plate type SBB

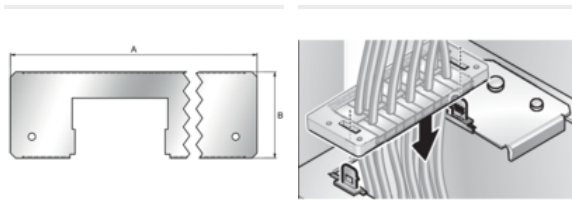


Product information

The control cabinet floor plate can be installed in Rittal (type CM, TS8 and VX) control cabinets. Up to 5 cable entry systems can be installed. The control cabinet floor plates are delivered without locking plates type VP (are required to close the floor plate). Non-required cut-outs can be closed with the BP/H 24 blanking plate.

- Protection category IP 54 when properly assembled as a system (control cabinet + floor plate)
- Can be installed entirely retrospectively
- Earthing points (M6 and M8) available on both side

Information, conformities and approvals



Article	Order No.	Color	For control cabinet width mm	No. Holder slots	Cut-out	Plate thickness mm	A mm	B mm	PU pcs.
with M5 thread (without locking plate type VP)									
SBB-VX-M5 440 1)	87821013	Material color	1000	2x 24-pin	VX	1.5	440	100	1
SBB-VX-M5 490	87821023	Material color	600	2x 24-pin	VX	1.5	490	100	1
SBB-VX-M5 540 1)	87821033	Material color	1200	3x 24-pin	VX	1.5	540	100	1
SBB-VX-M5 690	87821043	Material color	800	3x 24-pin	VX	1.5	690	100	1
with through-hole (without locking plate type VP)									
SBB-VX 440 1)	87821011	Material color	1000	2x 24-pin	VX	1.5	440	100	1
SBB-VX 490	87821021	Material color	600	2x 24-pin	VX	1.5	490	100	1
SBB-VX 540 1)	87821031	Material color	1200	3x 24-pin	VX	1.5	540	100	1
SBB-VX 690	87821041	Material color	800	3x 24-pin	VX	1.5	690	100	1
Spare part: Locking plate									
VP24 1**)	87821090	Black							5
VP/N 24 2**)	87821092	Black							5



Control cabinet floor plate type SBB

Article	Order No.	Color	For control cabinet width mm	No. Holder slots	Cut-out	Plate thickness mm	A mm	B mm	PU pcs.
---------	-----------	-------	------------------------------	------------------	---------	--------------------	------	------	---------

1) Cabinet width with central strut

1**) suitable for KDL/E 24
2**) suitable for KDP, KDL/C and KDL/D 24

1) Cabinet width with central strut

1**) suitable for KDL/E 24
2**) suitable for KDP, KDL/C and KDL/D 24

Material properties



Floor sheeting: Galvanised sheet steel
Locking plate: Polyamide 6.6 Galvanised sheet steel
Polyamide 6.6

Thermal properties



Temperature / temperature range
-40 °C - 125 °C

Protection class



Protection class
IP54 when installed properly

Fire properties



Fire classification
V0

Classification

ETIM 9: EC000211
ECLASS 14: 27142421
UNSPSC 26.0801: 39121312

General information



Made in Germany

All details given in our sales brochures and catalogues, as well as the information available online, are based on our current knowledge of the products described. The electronic data and files made available by Murrplastik, particularly CAD files are based on our current knowledge of the product described. A legally binding assurance of certain properties or the suitability for a certain purpose can not be determined from this information. All information with respect to the chemical and physical properties of Murrplastik products, as well as application advice given verbally, in writing or by tests, is given to the best of our knowledge. They do not release the buyer from the obligation to carry out his own tests and trials in order to determine the concrete suitability of the products for the intended purpose. Murrplastik accepts no responsibility for the available information being up-to-date, correct or complete. Neither do we accept responsibility for the quality of this information. Murrplastik accepts no liability for damage caused as a result of using our products. Murrplastik reserves the right to make technical changes and improvements through constant further development of products and services. Our General Terms and Conditions apply.