



## KCM-ECO manual cable labeling



### Product information

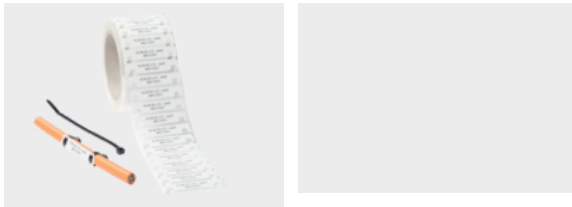
The KCM-ECO label plates are made of PE composite material on a transparent carrier film and a 3" core. The KCM-ECO plates are used for subsequent labeling of cables and thicker wires with labels and cable ties.

The special feature of the KCM-ECO label plates is the eyelet open on one side for faster feed-through of the cable tie. The cable tie only has to be threaded in on one side.

KCM-ECO label plates for subsequent manual cable labeling are available in sizes 60x12 mm and 75x15 mm in white or yellow.

Suitable for mp-TM series thermal transfer printers.

### Information, conformities and approvals



Article	Order No.	Color	Sheet size mm	Number of columns	Roll width mm	Recommended Colour ribbon	Software Article	PU pcs.
KCM-ECO 60x12	86513301	White	60 x 12	1	66	FB-TM 110 mm x 300 m	QE1	1000
KCM-ECO 60x12	86513351	Yellow	60 x 12	1	66	FB-TM 110 mm x 300 m	QE6	1000
KCM-ECO 75x15	86513300	White	75 x 15	1	81	FB-TM 110 mm x 300 m	QE0	1000
KCM-ECO 75x15	86513350	Yellow	75 x 15	1	81	FB-TM 110 mm x 300 m	QE5	1000

### Material properties



Polyethylene (PE)

### Thermal properties



Temperature / temperature range

-40 °C - 90 °C



## KCM-ECO manual cable labeling

### Technical information



Halogen-free



Silicone-free



Interior

### Classification

ETIM 9: EC001530  
ECLASS 14: 27281102  
UNSPSC 26.0801: 39131504

### General technical data



High tensile strength and tear resistance  
In compliance with the requirements of REACH and RoHS



High tensile strength and tear resistance  
In compliance with the requirements of REACH and RoHS

### Labelling technology



Thermal transfer