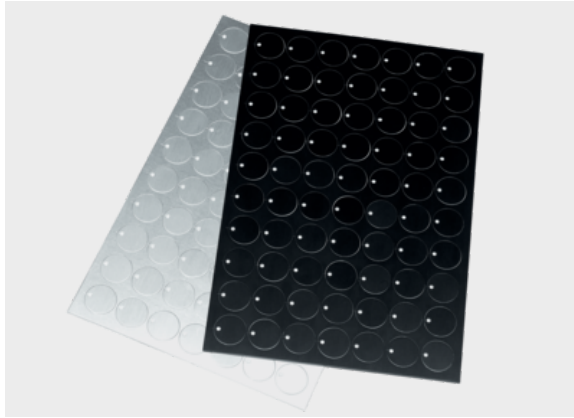


## ALU Rectangular with radius, 2x hole

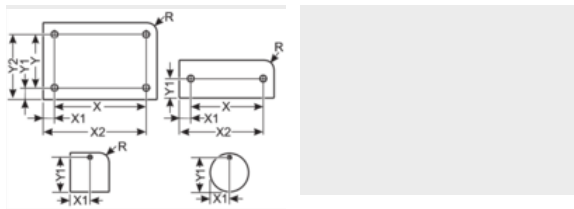


### Product information

The ALU labeling material, in mat size 300x200 mm, has been developed especially for engraving.

- Coloured anodised aluminium material
- Available with self-adhesive foil / adhesive foil
- Individual or prefab labels
- Temperature range up to approx. 200 °C
- Thickness: 1.0 mm
- marking technique: Engraving

### Information, conformities and approvals



Article	Order No.	Color	Label size mm	Number x Holes mm	Material thickness mm	Quantity per mat	Software Article	PU pcs.
<b>Corner radius 2 mm; with adhesive foil</b>								
ALU 76x50 R2 HF, 2x3,5MM	8604126058	Black anodized	76 x 50	2x 3.5	1	12	A00	12
ALU 79x33 R2 HF, 2x3,5MM	8604126059	Black anodized	79 x 33	2x 3.5	1	18	A10	18
ALU 15x50 R2 HF, 2x3,2MM	8604126046	Silver anodized	15 x 50	2x 3.2	1	80	M27	80
ALU 15x50 R2 HF, 2x4,2MM	8604126044	Silver anodized	15 x 50	2x 4.2	1	80	L50	80
ALU 15x80 R2 HF, 2x3,5MM	8604126054	Silver anodized	15 x 80	2x 3.5	1	40	A21	40
ALU 15x80 R2 HF, 2x4,2MM	8604126045	Silver anodized	15 x 80	2x 4.2	1	40	L51	40
ALU 15x100 R2 HF, 2x3,3MM	8604126050	Black anodized	15 x 100	2x 3.3	1	40	A98	40
ALU° 30x8 R2 HF, 2x2,5MM	8604126004	Black anodized	30 x 8	2x 2.5	1	250	485	250
ALU° 30x8 R2 HF, 2x2,5MM	8604126000	Silver anodized	30 x 8	2x 2.5	1	250	202	250
ALU 30x10 R2 HF, 2x3,5MM	8604126039	Silver anodized	30 x 10	2x 3.5	1	200	I59	200
ALU° 30x15 R2 HF, 2x2,2MM	8604126002	Black anodized	30 x 15	2x 2.2	1	130	466	130



## ALU Rectangular with radius, 2x hole

Article	Order No.	Color	Label size mm	Number x Holes mm	Material thickness mm	Quantity per mat	Software Article	PU pcs.
ALU <sup>o</sup> 30x15 R2 HF, 2x2.2MM 1)	8604126001	Silver anodized	30 x 15	2x 2.2	1	130	361	130
ALU 30x15 R2 HF, 2x3.5MM 1)	8604126017	Silver anodized	30 x 15	2x 3.5	1	130	312	130
ALU <sup>o</sup> 30x15 R2 HF, 2x4.0MM 1)	8604126003	Black anodized	30 x 15	2x 4.0	1	130	463	130
ALU <sup>o</sup> 30x15 R2 HF, 2x4.0MM 1)	8604126005	Silver anodized	30 x 15	2x 4.0	1	130	362	130
ALU 30x15 R2 HF 2x4.2MM 1)	8604126043	Silver anodized	30 x 15	2x 4.2	1	130	L49	130
ALU 36x10 R2 HF, 2x2.5MM 1)	8604126048	Silver anodized	36 x 10	2x 2.5	1	160	Z64	160
ALU 36x10 R2 HF, 2x2.5MM 1)	8604126049	Silver anodized	36 x 10	2x 2.5	1	160	Z82	160
ALU 36x10 R2 HF, 2x2.5MM 1)	8604126019	Black anodized	36 x 10	2x 2.5	1	160	013	160
ALU 36x10 R2 HF, 2x4.0MM 1)	8604126018	Black anodized	36 x 10	2x 4.0	1	160	531	160
ALU 40x10 R2 HF, 2x4.0MM 1)	8604126009	Silver anodized	40 x 10	2x 4.0	1	140	871	140
ALU <sup>o</sup> 40x12 R2 HF, 2x2.5MM 1)	8604126007	Silver anodized	40 x 12	2x 2.5	1	112	283	112
ALU 40x15 R2 HF, 2x3.0MM 1)	8604126024	Silver anodized	40 x 15	2x 3.0	1	91	153	91
ALU <sup>o</sup> 40x15 R2 HF, 2x4.0MM 1)	8604226003	Silver anodized	40 x 15	2x 4.0	1	91	732	91
ALU 40x25 R2 HF, 2x3.0MM 1)	8604126014	Silver anodized	40 x 25	2x 3.0	1	56	394	56
ALU 42x16 R2 HF, 2x3.2MM 1)	8604126029	Silver anodized	42 x 16	2x 3.2	1	84	4E	84
ALU 45x10 R2 HF, 2x2.5MM 1)	8604126010	Black anodized	45 x 10	2x 2.5	1	120	885	120
ALU 45x10 R2 HF, 2x2.5MM 1)	8604126012	Silver anodized	45 x 10	2x 2.5	1	120	884	120
ALU 45x10 R2 HF, 2x3.0MM 1)	8604126035	Black anodized	45 x 10	2x 3.0	1	120	E27	120
ALU 45x18 R2 HF, 2x2.5MM 1)	8604126032	Silver anodized	45 x 18	2x 2.5	1	66	5C	66
ALU 50x15 R2 HF, 2x3.2MM 1)	8604126028	Silver anodized	50 x 15	2x 3.2	1	78	4C	78
ALU <sup>o</sup> 50x15 R2 HF, 2x3.5MM 1)	8604126022	Silver anodized	50 x 15	2x 3.5	1	78	064	78
ALU 50x15 R2 HF, 2x3.5MM 1)	8604126027	Silver anodized	50 x 15	2x 3.5	1	78	4A	78



## ALU Rectangular with radius, 2x hole

Article	Order No.	Color	Label size mm	Number x Holes mm	Material thickness mm	Quantity per mat	Software Article	PU pcs.
ALU 50x30 R2 HF, 2x2,2MM 1)	8604126021	Silver anodized	50 x 30	2x 2.2	1	36	063	36
ALU 50x30 R2 HF, 2x3,0MM 1)	8604226005	Silver anodized	50 x 30	2x 3.0	1	36	737	36
ALU 50x40 R2 HF, 2x3,0MM 1)	8604226004	Silver anodized	50 x 40	2x 3.0	1	30	738	30
ALU 52x18 R2 HF, 2x2,5MM 1)	8604126025	Black anodized	52 x 18	2x 2.5	1	55	618	55
ALU° 52x18 R2 HF, 2x2,5MM 1)	8604126006	Silver anodized	52 x 18	2x 2.5	1	55	R10	55
ALU 52x18 R2 HF, 2x3,2MM 1)	8604126030	Silver anodized	52 x 18	2x 3.2	1	55	46	55
ALU 52x26 R2 HF, 2x2,5MM 1)	8604126026	Black anodized	52 x 26	2x 2.5	1	35	619	35
ALU 58x23 R2 HF, 2x4,0MM 1)	8604126053	Silver anodized	58 x 23	2x 4.0	1	40	A4F	40
ALU 60x12 R2 HF, 2x2,5MM 1)	8604126037	Black anodized	60 x 12	2x 2.5	1	80	H92	80
ALU 60x20 R2 HF, 2x3,5MM 1)	8604126041	Red anodized	60 x 20	2x 3.5	1	50	K71	50
ALU 60x40 R2 HF, 2x2,5MM 1)	8604126020	Black anodized	60 x 40	2x 2.5	1	25	67	25
ALU 60x40 R2 HF, 2x2,5MM 1)	8604126016	Silver anodized	60 x 40	2x 2.5	1	25	42	25
ALU 70x30 R2 HF, 2x3,5MM 1)	8604126042	Gold anodized	70 x 30	2x 3.5	1	24	K78	24
ALU 70x30 R2 HF, 2x3,5MM 1)	8604126051	Blue anodized	70 x 30	2x 3.5	1	24	A4E	24
ALU 70x30 R2 HF, 2x3,5MM 1)	8604126052	Red anodized	70 x 30	2x 3.5	1	24	A5E	24
ALU 74x10 R2 HF, 2x2,5MM 1)	8604126011	Black anodized	74 x 10	2x 2.5	1	80	882	80
ALU 74x10 R2 HF, 2x2,5MM 1)	8604126013	Silver anodized	74 x 10	2x 2.5	1	80	883	80
ALU 74x18 R2 HF, 2x3,1MM 1)	8604126040	Black anodized	74 x 18	2x 3.1	1	44	K63	44
ALU 80x15 R2 HF, 2x4,0MM 1)	8604126008	Silver anodized	80 x 15	2x 4.0	1	39	787	39
ALU 100x50 R2 HF, 2x3,1MM 1)	8604126033	Red anodized	100 x 50	2x 3.1	1	12	6J	12
ALU 100x50 R2 HF, 2x2,5MM 1)	8604126015	Silver anodized	100 x 50	2x 2.5	1	12	364	12
ALU 125x40 R2 HF, 2x2,5MM 1)	8604226002	Silver anodized	125 x 40	2x 2.5	1	10	676	10

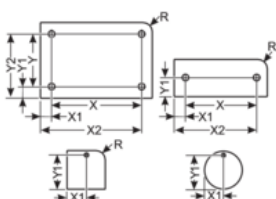


## ALU Rectangular with radius, 2x hole

Article	Order No.	Color	Label size mm	Number x Holes mm	Material thickness mm	Quantity per mat	Software Article	PU pcs.
<b>Corner radius 1 mm; with adhesive foil</b>								
ALU 25x8 R1 HF, 2x3.2MM 1)	8604126047	Black anodized	25 x 8	2x 3.2	1	300	M69	300
ALU 25x10 R1 HF, 2x3.2MM 1)	8604126036	Silver anodized	25 x 10	2x 3.2	1	240	H77	240
<b>Corner radius 2 mm; with self-adhesive foil</b>								
ALU 30x8 R2 SK, 2x2.5MM 1)	8604120002	Black anodized	30 x 8	2x 2.5	1	250	230	250
ALU 30x15 R2 SK, 2x2.2MM 1)	8604120005	Silver anodized	30 x 15	2x 2.2	1	130	9P	130
ALU 30x15 R2 SK, 2x4.0MM 1)	8604120001	Silver anodized	30 x 15	2x 4.0	1	130	060	130
ALU 30x20 R2 SK, 2x2.2MM 1)	8604120006	Black anodized	30 x 20	2x 2.2	1	100	J37	100
<b>Corner radius 2.5 mm; with adhesive foil</b>								
ALU 40x10 R2.5 HF, 2x2.5MM 1)	8604126034	Black anodized	40 x 10	2x 2.5	1	140	9V	140
<b>Corner radius 6 mm; with adhesive foil</b>								
ALU 40x12 R6 HF, 2x3.5MM 1)	8604126023	Silver anodized	40 x 12	2x 3.5	1	112	067	112
<b>Corner radius 3 mm; with adhesive foil</b>								
ALU 52x18 R3 HF, 2x3.2MM 1)	8604126038	Silver anodized	52 x 18	2x 3.2	1	55	I56	55
<b>Corner radius 1 mm; with self-adhesive foil</b>								
ALU 60x15 R1 SK, 2x3.2MM 1)	8604120037	Silver anodized	60 x 15	2x 3.2	1	65	H78	65
ALU 70x15 R1 SK, 2x3.2MM 1)	8604120038	Silver anodized	70 x 15	2x 3.2	1	52	H79	52

1) Other sizes available on request

1) Other sizes available on request





## ALU Rectangular with radius, 2x hole

Article	Order No.	Drill hole pitch X mm	Drill hole pitch Y mm	Drill hole position X1 mm	Drill hole position Y1 mm	Drill hole position X2 mm	Drill hole position Y2 mm
ALU 76x50 R2 HF, 2x3,5MM	8604126058						
ALU 79x33 R2 HF, 2x3,5MM	8604126059						
ALU 15x50 R2 HF, 2x3,2MM 1)	8604126046		42	7.5	4		46
ALU 15x50 R2 HF, 2x4,2MM 1)	8604126044		44	7.5	3		47
ALU 15x80 R2 HF, 2x3,5MM 1)	8604126054		69.4	7.5	5.3		74.7
ALU 15x80 R2 HF, 2x4,2MM 1)	8604126045		74	7.5	3		77
ALU 15x100 R2 HF, 2x3,3MM 1)	8604126050		94	7.5	3		97
ALU° 30x8 R2 HF, 2x2,5MM 1)	8604126004	24		3	4	27	
ALU° 30x8 R2 HF, 2x2,5MM 1)	8604126000	24		3	4	27	
ALU 30x10 R2 HF, 2x3,5MM 1)	8604126039	23		3.5	5	26.5	
ALU° 30x15 R2 HF, 2x2,2MM 1)	8604126002	24		3	7.5	27	
ALU° 30x15 R2 HF, 2x2,2MM 1)	8604126001	24		3	7.5	27	
ALU 30x15 R2 HF, 2x3,5MM 1)	8604126017	24		3	7.5	27	
ALU° 30x15 R2 HF, 2x4,0MM 1)	8604126003	24		3	7.5	27	
ALU° 30x15 R2 HF, 2x4,0MM 1)	8604126005	24		3	7.5	27	
ALU 30x15 R2 HF 2x4,2MM 1)	8604126043	24		3	7.5	27	
ALU 36x10 R2 HF, 2x2,5MM 1)	8604126048	24		4	5	28	
ALU 36x10 R2 HF, 2x2,5MM 1)	8604126049	28		4	5	32	
ALU 36x10 R2 HF, 2x2,5MM 1)	8604126019	28		4	5	32	
ALU 36x10 R2 HF, 2x4,0MM 1)	8604126018	28		4	5	32	
ALU 40x10 R2 HF, 2x4,0MM 1)	8604126009	32		4	5	36	
ALU° 40x12 R2 HF, 2x2,5MM 1)	8604126007	34		3	6	37	
ALU 40x15 R2 HF, 2x3,0MM 1)	8604126024	32		4	7.5	36	
ALU° 40x15 R2 HF, 2x4,0MM 1)	8604226003	34		3	7.5	37	



## ALU Rectangular with radius, 2x hole

Article	Order No.	Drill hole pitch X mm	Drill hole pitch Y mm	Drill hole position X1 mm	Drill hole position Y1 mm	Drill hole position X2 mm	Drill hole position Y2 mm
ALU 40x25 R2 HF, 2x3,0MM 1)	8604126014	34		3	12.5		37
ALU 42x16 R2 HF, 2x3,2MM 1)	8604126029	36		3	8		39
ALU 45x10 R2 HF, 2x2,5MM 1)	8604126010	36		4.5	5		40.5
ALU 45x10 R2 HF, 2x2,5MM 1)	8604126012	36		4.5	5		40.5
ALU 45x10 R2 HF, 2x3,0MM 1)	8604126035	36		4.5	5		40.5
ALU 45x18 R2 HF, 2x2,5MM 1)	8604126032	37		4	9		41
ALU 50x15 R2 HF, 2x3,2MM 1)	8604126028	45		2.5	7.5		47.5
ALU° 50x15 R2 HF, 2x3,5MM 1)	8604126022	43		3.5	7.5		46.5
ALU 50x15 R2 HF, 2x3,5MM 1)	8604126027	45		2.5	7.5		47.5
ALU 50x30 R2 HF, 2x2,2MM 1)	8604126021	43		3.5	15		46.5
ALU 50x30 R2 HF, 2x3,0MM 1)	8604226005	43		3.5	15		46.5
ALU 50x40 R2 HF, 2x3,0MM 1)	8604226004	43		3.5	20		46.5
ALU 52x18 R2 HF, 2x2,5MM 1)	8604126025	45		3.5	9		48.5
ALU° 52x18 R2 HF, 2x2,5MM 1)	8604126006	45		3.5	9		48.5
ALU 52x18 R2 HF, 2x3,2MM 1)	8604126030	42		5	9		47
ALU 52x26 R2 HF, 2x2,5MM 1)	8604126026	45		3.5	13		48.5
ALU 58x23 R2 HF, 2x4,0MM 1)	8604126053	50		4	11.4		54
ALU 60x12 R2 HF, 2x2,5MM 1)	8604126037	53.5		3.25	6		56.75
ALU 60x20 R2 HF, 2x3,5MM 1)	8604126041	49.5		5.25	10		54.75
ALU 60x40 R2 HF, 2x2,5MM 1)	8604126020	50		5	20		55
ALU 60x40 R2 HF, 2x2,5MM 1)	8604126016	50		5	20		55
ALU 70x30 R2 HF, 2x3,5MM 1)	8604126042	58		4	26		62
ALU 70x30 R2 HF, 2x3,5MM 1)	8604126051	62		4	15		66
ALU 70x30 R2 HF, 2x3,5MM 1)	8604126052	62		4	15		66
ALU 74x10 R2 HF, 2x2,5MM 1)	8604126011	66.5		3.75	5		70.25



## ALU Rectangular with radius, 2x hole

Article	Order No.	Drill hole pitch X mm	Drill hole pitch Y mm	Drill hole position X1 mm	Drill hole position Y1 mm	Drill hole position X2 mm	Drill hole position Y2 mm
ALU 74x10 R2 HF, 2x2,5MM 1)	8604126013	66.5		3.75	5	70.25	
ALU 74x18 R2 HF 2x3,1MM 1)	8604126040	68		3	9	71	
ALU 80x15 R2 HF, 2x4,0MM 1)	8604126008	74		3	7.5	77	
ALU 100x50 R2 HF, 2x3,1MM 1)	8604126033	86		7	25	93	
ALU 100x50 R2 HF, 2x2,5MM 1)	8604126015	90		5	25	95	
ALU 125x40 R2 HF, 2x2,5MM 1)	8604226002	118		3.5	20	121.5	
<b>Corner radius 1 mm; with adhesive foil</b>							
ALU 25x8 R1 HF, 2x3,2MM 1)	8604126047	19		3	4	22	
ALU 25x10 R1 HF, 2x3,2MM 1)	8604126036	21		2	5	23	
<b>Corner radius 2 mm; with self-adhesive foil</b>							
ALU 30x8 R2 SK, 2x2,5MM 1)	8604120002	24		3	4	27	
ALU 30x15 R2 SK, 2x2,2MM 1)	8604120005	24		3	7.5	27	
ALU 30x15 R2 SK, 2x4,0MM 1)	8604120001	24		3	7.5	27	
ALU 30x20 R2 SK, 2x2,2MM 1)	8604120006	24		3	10	27	
<b>Corner radius 2.5 mm; with adhesive foil</b>							
ALU 40x10 R2.5 HF, 2x2,5MM 1)	8604126034	34		3	5	37	
<b>Corner radius 6 mm; with adhesive foil</b>							
ALU 40x12 R6 HF, 2x3,5MM 1)	8604126023	32		4	6	36	
<b>Corner radius 3 mm; with adhesive foil</b>							
ALU 52x18 R3 HF, 2x3,2MM 1)	8604126038	46		3	9	49	
<b>Corner radius 1 mm; with self-adhesive foil</b>							
ALU 60x15 R1 SK, 2x3,2MM 1)	8604120037	53		3.5	7.5	56.5	
ALU 70x15 R1 SK, 2x3,2MM 1)	8604120038	63		3.5	7.5	66.5	
1) Other sizes available on request							



## ALU Rectangular with radius, 2x hole

### Material properties



Aluminium anodised (ALU)

### Adhesive properties



467SK adhesive film with adhesive

### Thermal properties



Temperature / temperature range

-40 °C - 140 °C

### Fire properties



Fire classification

V0

### Classification

ETIM 9: EC001288

ECLASS 14: 27144009

UNSPSC 26.0801: 39131504

### General technical data



Assembly method

00000001Label glued into place 0001Mounting the label with screws 0

### Assembly method



Adhesive system



Screw system

### Labelling technology



Engraving

All details given in our sales brochures and catalogues, as well as the information available online, are based on our current knowledge of the products described.

The electronic data and files made available by Murrplastik, particularly CAD files are based on our current knowledge of the product described.

A legally binding assurance of certain properties or the suitability for a certain purpose can not be determined from this information.

All information with respect to the chemical and physical properties of Murrplastik products, as well as application advice given verbally, in writing or by tests, is given to the best of our knowledge.

They do not release the buyer from the obligation to carry out his own tests and trials in order to determine the concrete suitability of the products for the intended purpose.

Murrplastik accepts no responsibility for the available information being up-to-date, correct or complete. Neither do we accept responsibility for the quality of this information.

Murrplastik accepts no liability for damage caused as a result of using our products.

Murrplastik reserves the right to make technical changes and improvements through constant further development of products and services.

Our General Terms and Conditions apply.