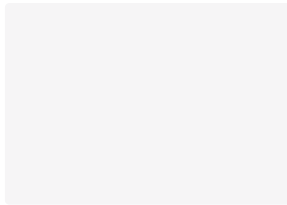
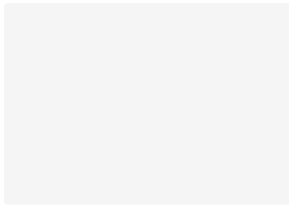
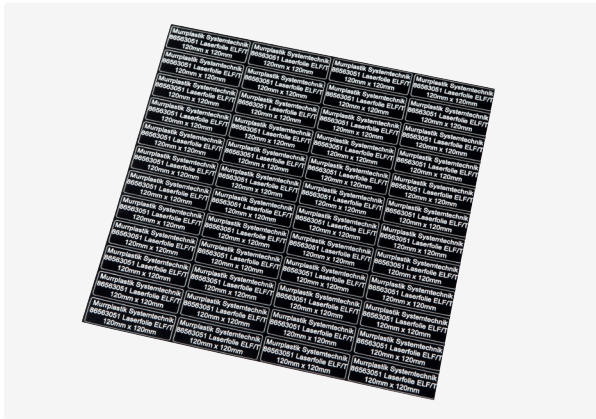




ELF/T foil laser label



Product information

The double-layer ELF laser label foil is ideal for the production of custom adhesive labels and displays a reliable, permanent adhesion on Polyolefine (PE/PP), slightly oily or powder coated surfaces.

Complete cover of high-contrast base colours. labeling and cutting is done with a Murrplastik laser system.

- Halogen-free polyacrylate foil
- Very good chemical and thermal resistance
- Self-extinguishing after 15 seconds
- Custom configuration of the labels
- Forgery-proof: Cannot be detached without destruction
- External suction system

When laser inscribing ELF/T laser label foil, you must scrub the exhaust air or route it to the outside (observing statutory provisions) as a precautionary measure against the sometimes strong odours that the machine produces, and to not endanger the health of employees. An external suction system can be connected directly to the MP laser labeling system using an adapter.

Information, conformities and approvals



| Article | Order No. | Color | Printable area mm | No. characters/lines | Software Article | PU pcs. |
|---------------------|-----------|---------------|-------------------|----------------------|------------------|---------|
| ELF/T 120x120 SW/WS | 86563051 | Black / White | 119 x 119 | 66 / 35 | A89 | 100 |

Material properties



Polyacrylate |



ELF/T foil laser label

Adhesive properties



350T Acrylate adhesive film with adhesive

Thermal properties



Temperature / temperature range -40 °C – 120 °C
short termshort term: 270 °C

General technical data

Single-line and multi-line labelling

External suction system mandatory

Assembly method



Adhesive system

Labelling technology



Laser