



Type SAT-GF



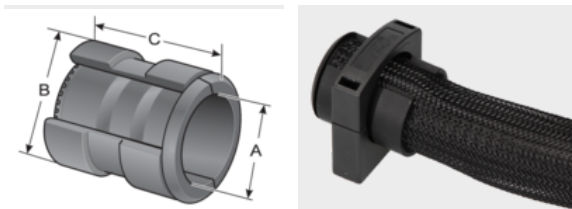
Product information

The SAT-GF serves as an end piece for the braided conduits GF and GF-P. It consists of an outer sleeve and a divisible inner sleeve and can therefore also be retrofitted. The braided conduit can thus also be combined with the UHE conduit holder or with the m-fix conduit fitting by means of the SAT-GF connector.

Advantages:

- Subsequent and tool-free assembly
- Gapless insertion of the braided conduit into a housing
- Cable protection with low weight

Information, conformities and approvals



Article	Order No.	Color	Suitable for GF	Suitable for GF-P	A mm	B mm	C mm	PU pcs.
SAT-GF M16/P11	83651606	Black	8 / 10 / 12	10 / 12	8.6	14.5	27	50
SAT-GF M20/P16	83651608	Black	16	16 / 20	13.8	20.5	27	50
SAT-GF M25/P21	83651610	Black	20 / 22	22	18	28	33	50
SAT-GF M32/P29	83651612	Black	30	22 / 30	23.1	33.5	33	25
SAT-GF M40/P36	83651614	Black	40	30 / 40	29.1	41.8	46	25
SAT-GF M50/P48	83651616	Black	50	40 / 50	41.1	53.8	53	25

Material properties



mod. polyamide PA 6

Thermal properties



Temperature / temperature range
-40 °C - 110 °C / short term: 140 °C



Type SAT-GF

Fire properties



Fire classification

acc. to UL94: V0 self-extinguishing



Fire properties as per EN 45545-2

C.I.T. R22 / R23 HL3 :0,58 EN 17084
LOI R22 / R23 HL3 :≥ 32 % ISO 4589-2
Ds (max.) R22 / R23 HL3 :57 ISO 5659-2 (25 KW/m²)



Fire properties as per NFPA

ASTM E 162
ASTM E 1354
ASTM E 662
Boeing BSS 7239
Boeing BSS 7242
Bombardier SMP 800-C

Chemical resistances



Resistant to:

Alcohol
Greases
Fuels
Mineral oils

Technical information



Halogen-free

Conformity



ECE 324 R 118

Approvals and operating permits



EU railway approval

Compatibility/combination possibilities of murrplastik products

Holder / Conduit	EW	EW...S	EWX	EW-LS	EWT
USH	✓	✓	✓	✓	✓
UHE	✓	✓	✓	✓	✓
UH-S	✓	✓	✓	✓	✓
UH + BL	✓	✓	✓	✓	✓

Fitting / Conduit	EW	EW...S	EWX	EW-LS	EWT
M-FIX	✓	✓	✓	✓	✓
M-TEC	✓	✓	✓	✓	✓
M-TOP	✓	✓	✓	✓	✓
M-PRO	✓	✓	✓	✓	✓
KFW/D	✓	✓	x	✓	✓
KFW/X	x	x	✓	x	x
SVT	✓	x	x	✓	✓
SVT/X	x	x	✓	x	x

Other products / Conduit	EW	EW...S	EWX	EW-LS	EWT
PR/SV	✓	x	x	✓	✓
AT	✓	✓	✓	✓	✓
SVG	✓	x	x	✓	✓
VT	✓	✓	✓	✓	✓
YTPE-F	✓	✓	✓	✓	✓

SAT-GF / Holder	USH	UHE	UH-S	UH + BL
SAT-GF	x	✓	✓	x

SAT-GF / Fitting	M-FIX	M-TEC	M-TOP	M-PRO
SAT-GF	✓	✓	x	✓