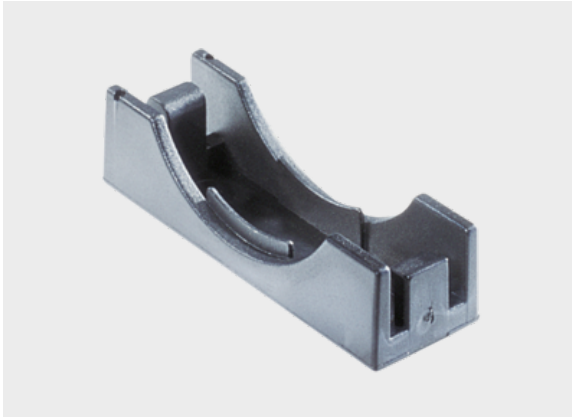




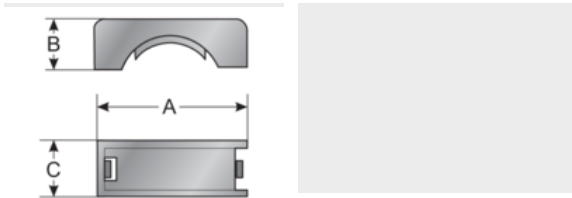
Type BL (clamping bracket for types UH and UHG)



Product information

The BL clamping bracket can be used for types UH and UHG and is made from specially modified polyamide. The material is halogen, phosphor and cadmium-free. The bracket can be used to achieve additional support of the conduit clamp for high loads.

Information, conformities and approvals



Article	Order No.	Color	UV	Suited for holder	A mm	B mm	C mm	PU pcs.
BL 09	83621406	Black	✓	UH 09 / UHG 09	29	10	12.5	100
BL 11	83621408	Black	✓	UH 11 / UHG 11	29	11	12.5	100
BL 16	83621410	Black	✓	UH 16 / UHG 16	34	12	15	100
BL 21	83621412	Black	✓	UH 21 / UHG 21	41	13	15.5	100
BL 29	83621414	Black	✓	UH 29 / UHG 26	50	14	16	50
BL 36	83621416	Black	✓	UH 36 / UHG 36	60	17	18	50
BL 48	83621418	Black	✓	UH 48 / UHG 48	72	19	18.5	50
BL 09	83621146	Gray	✗	UH 09 / UHG 09	29	10	12.5	100
BL 11	83621148	Gray	✗	UH 11 / UHG 11	29	11	12.5	100
BL 16	83621150	Gray	✗	UH 16 / UHG 16	34	12	15	100
BL 21	83621152	Gray	✗	UH 21 / UHG 21	41	13	15.5	100
BL 29	83621154	Gray	✗	UH 29 / UHG 26	50	14	16	50
BL 36	83621156	Gray	✗	UH 36 / UHG 36	60	17	18	50



Type BL (clamping bracket for types UH and UHG)

Article	Order No.	Color	UV	Suited for holder	A mm	B mm	C mm	PU pcs.
BL 48	83621158	Gray	X	UH 48 / UHG 48	72	19	18.5	50

Material properties



UL listed material mod. polyamide PA 6 mod. polyamide PA 6

Thermal properties



Temperature / temperature range

-40 °C - 110 °C / short term: 140 °C

Fire properties



Fire classification

acc. to UL94: V0 self-extinguishing



Fire properties as per EN 45545-2

C.I.T. R22 / R23 HL3 :0,58 NF X 70-100-1/-2 600°C (1112 °F)
LOI R22 / R23 HL3 :≥ 32 % ISO 4589-2
Ds (max.) R22 / R23 HL3 :57 ISO 5659-2 (25 KW/m²)



Fire properties as per NFPA

ASTM E 162
ASTM E 1354
ASTM E 662
Boeing BSS 7239
Boeing BSS 7242
Bombardier SMP 800-C

Chemical resistances



Resistant to:

Alcohol
Greases
Fuels
Mineral oils

Technical information



Halogen-free



Type BL (clamping bracket for types UH and UHG)

Conformity



RoHS (EC Directive 2011/65/EU)



ECE 324 R 118

Approvals and operating permits



EU railway approval



cURus approval

Classification

ETIM 9: EC000368
ECLASS 14: 27430315

General information



Made in Germany