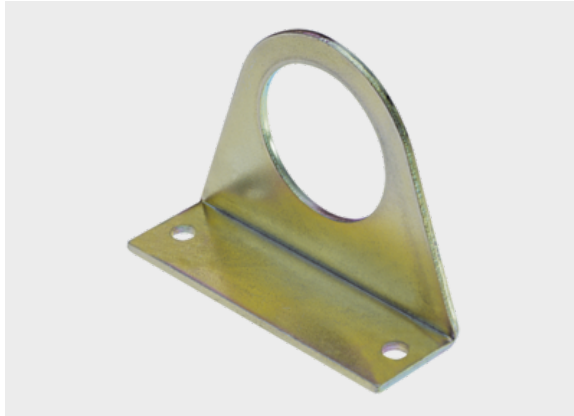




## Type BWM (fastening bracket)



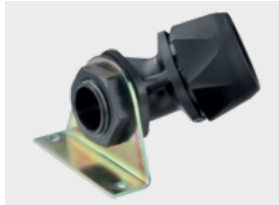
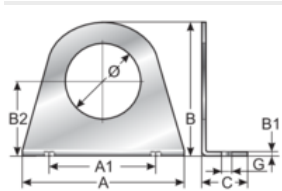
### Product information

The type BWM fastening bracket is made of sheet steel with zinc plating. It is used as a universal holder for fastening fittings to equipment and machinery. The fastening bracket features the following advantages:

- Quick and easy fastening
- For Pg and metric fittings
- Fastening of fitting secured with lock nut

### Information, conformities and approvals

RoHS



Article	Order No.	Thread	A mm	B mm	C mm	G mm	A1 mm	B1 mm	Ø mm	PU pcs.
BWM-M12x1,5	83721660	M12x1,5	35	31.5	12	4.5	25	1.5	12.4	25
BWM-M16x1,5	83721662	M16x1,5	50	38	20	4.5	40	2	17	25
BWM-M20x1,5	83721664	M20x1,5	50	38	20	4.5	40	2	20.5	25
BWM-M25x1,5	83721666	M25x1,5	60	47.5	20	4.5	50	2	26	25
BWM-M32x1,5	83721668	M32x1,5	70	57.5	20	4.5	60	2	32.9	25
BWM-M40x1,5	83721670	M40x1,5	80	67.5	20	4.4	70	2	40.9	25
BWM-M50x1,5	83721672	M50x1,5	90	78.5	20	4.5	80	2	51	25
BWM 09	83721610	PG 09	35	31.5	12	4.5	25	1.5	15.3	25
BWM 11	83721612	PG 11	35	31.5	12	4.5	25	1.5	18.8	25
BWM 16	83721614	PG 16	50	38	20	4.5	39.5	2	23	25
BWM 21	83721616	PG 21	60	47.5	20	4.5	50	2	28.5	25
BWM 29	83721618	PG 29	70	57.3	20	4.5	60.3	2	37.5	25
BWM 36	83721620	PG 36	80	67.8	20	4.5	70.2	2	47.5	25



## Type BWM (fastening bracket)

Article	Order No.	Thread	A mm	B mm	C mm	G mm	A1 mm	B1 mm	Ø mm	PU pcs.
BWM 48	83721622	PG 48	90	78.6	20	4.5	80	2	60	25

### Material properties



Galvanised sheet steel

### Conformity



RoHS (EC Directive 2011/65/EU)

### Classification

ETIM 9: EC001458  
ECLASS 14: 27430309