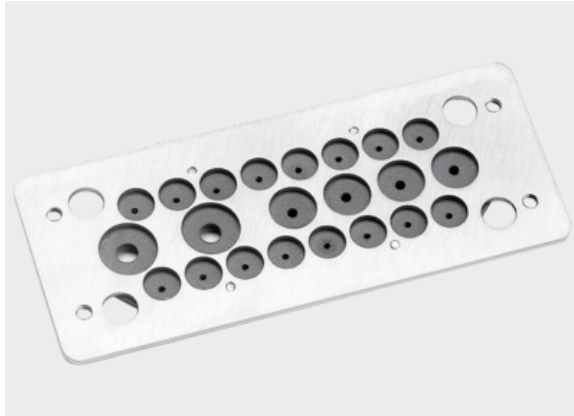




## Cable entry plate type KDP EMC Module



### Product information

The Murrplastik KDP 24 EMV module is designed to dissipate line and field induced interference. The KDP 24 EMV modules are used in conjunction with the cable entry plates type KDP/X 24 and KDP/N 24. In order to ensure optimum performance, the EMC module is assembled in combination with the KDP/... 24 cable entry plate. While the EMC module makes direct contact with the enclosure wall on the inside of the enclosure, the KDP/... 24 cable entry plate provides mechanical protection against dust and liquids from the environment.

The special advantages of the KDP 24 EMV modules are:

- Cable-friendly 360° shield contacting
- Large contact area with short distance
- Very easy assembly
- Compact and slim design
- Visible contact area
- Stainless steel construction

### Information, conformities and approvals



Article	Order No.	Color	Suitable for	PU pcs.
KDP 24/10 EMV module	87664008	Material color	KDP/xx 24/10	1
KDP 24/11 EMV module	87664010	Material color	KDP/xx 24/11	1
KDP 24/12 EMV module	87664020	Material color	KDP/xx 24/12	1
KDP 24/13 EMV module	87664030	Material color	KDP/xx 24/13	1
KDP 24/14 EMV module	87664040	Material color	KDP/xx 24/14	1
KDP 24/17 EMV module	87664050	Material color	KDP/xx 24/17	1
KDP 24/17-1 EMV-Modul	87664051	Material color	KDP/xx 24/17-1	1
KDP 24/22 EMV module	87664060	Material color	KDP/xx 24/22	1
KDP 24/23 EMV module	87664070	Material color	KDP/xx 24/23	1
KDP 24/29 EMV module	87664080	Material color	KDP/xx 24/29	1

### Classification

ETIM 9: EC002623  
ECLASS 14: 27182804  
UNSPSC 26.0801: 39121613



---

## Cable entry plate type KDP EMC Module

---

---