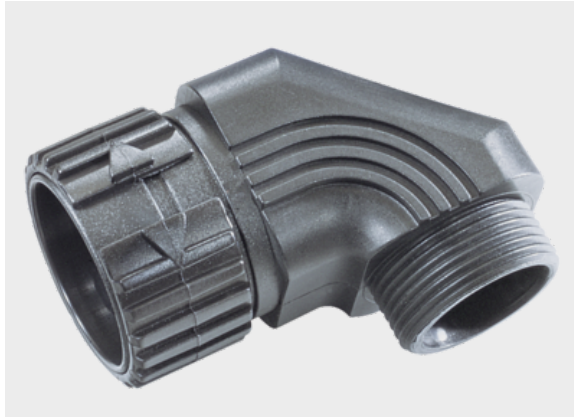




Type WSV 90° (angle plug-in fitting)



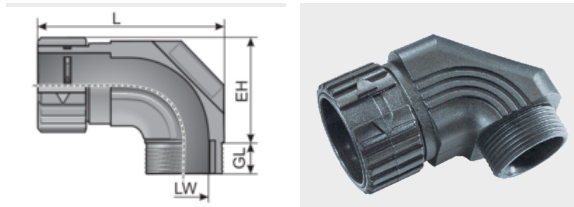
Product information

The WSV conduit fittings are made of specially modified polyamide 6. The materials are halogen, phosphor and cadmium-free.

The affordable MSV conduit fittings feature the following advantages:

- No parts can get lost, delivered completely assembled
- Cost reduction through simple assembly work, insert conduit and done
- Simple opening mechanism
- Tightness of IP 54 for static and dynamic application, IP 65 with additional mounting of an O-ring

Information, conformities and approvals



Article	Order No.	Color	UV	Connecting thread	Suitable for Murrflex	EH mm	GL mm	LW mm	PU pcs.
WSV M16x1,5/9	83605050	Black	✓	M16x1,5	M12/P09	26	7.5	10	50
WSV M20x1,5/11	83605052	Black	✓	M20x1,5	M16/P11	29	8	12	50
WSV M25x1,5/16	83605054	Black	✓	M25x1,5	M20/P16(S)	32	10	16	50
WSV M32x1,5/21	83605056	Black	✓	M32x1,5	M25/P21(S)	39	11	22	25
WSV M40x1,5/29	83605058	Black	✓	M40x1,5	M32/P29(S)	51	12	28	25
WSV M50x1,5/36	83605060	Black	✓	M50x1,5	M40/P36(S)	70	15	35	10
WSV M63x1,5/48	83605062	Black	✓	M63x1,5	M50/P48(S)	96	15	49	10
WSV M16x1,5/9	83605010	Gray	✗	M16x1,5	M12/P09	26	7.5	10	50
WSV M20x1,5/11	83605012	Gray	✗	M20x1,5	M16/P11	29	8	12	50
WSV M25x1,5/16	83605014	Gray	✗	M25x1,5	M20/P16(S)	32	10	16	50
WSV M32x1,5/21	83605016	Gray	✗	M32x1,5	M25/P21(S)	39	11	22	25
WSV M40x1,5/29	83605018	Gray	✗	M40x1,5	M32/P29(S)	51	12	28	25
WSV M50x1,5/36	83605020	Gray	✗	M50x1,5	M40/P36(S)	70	15	35	10



Type WSV 90° (angle plug-in fitting)

Article	Order No.	Color	UV	Connecting thread	Suitable for Murrflex	EH mm	GL mm	LW mm	PU pcs.
WSV M63x1,5/48	83605022	Gray	✗	M63x1,5	M50/P48(S)	96	15	49	10
WSV PG09	83601450	Black	✓	PG 09	M12/P09	28.5	8	13	50
WSV PG11	83601452	Black	✓	PG 11	M16/P11	28.5	8	13	50
WSV PG13.5/16	83601454	Black	✓	PG 13,5	M20/P16(S)	32	10	16	50
WSV PG16	83601456	Black	✓	PG 16	M20/P16(S)	32	10	16	50
WSV PG21	83601458	Black	✓	PG 21	M25/P21(S)	38.5	11.5	22	25
WSV PG29	83601460	Black	✓	PG 29	M32/P29(S)	50.5	12	28	25
WSV PG36	83601462	Black	✓	PG 36	M40/P36(S)	70	15.5	35	10
WSV PG48	83601464	Black	✓	PG 48	M50/P48(S)	96	16	49	10
WSV PG09	83601410	Gray	✗	PG 09	M12/P09	28.5	8	13	50
WSV PG11	83601412	Gray	✗	PG 11	M16/P11	28.5	8	13	50
WSV PG13.5/16	83601414	Gray	✗	PG 13,5	M20/P16(S)	32	10	16	50
WSV PG16	83601416	Gray	✗	PG 16	M20/P16(S)	32	10	16	50
WSV PG21	83601418	Gray	✗	PG 21	M25/P21(S)	38.5	11.5	22	25
WSV PG29	83601420	Gray	✗	PG 29	M32/P29(S)	50.5	12	28	25
WSV PG36	83601422	Gray	✗	PG 36	M40/P36(S)	70	15.5	35	10
WSV PG48	83601424	Gray	✗	PG 48	M50/P48(S)	96	16	49	10
WSV NPT-1/2"/16 ¹⁾	83602056	Black	✓	1/2"	M20/P16(S)	32	10	16	50
WSV NPT-3/4"/21 ¹⁾	83602058	Black	✓	3/4"	M25/P21(S)	39	10	22	25
WSV NPT-1"/29 ¹⁾	83602060	Black	✓	1"	M32/P29(S)	51	12	28	25
WSV NPT-3/4"/21 ¹⁾	83602018	Gray	✗	3/4"	M25/P21(S)	39	10	22	25

¹⁾ Discontinued product!

¹⁾ Discontinued product!



Type WSV 90° (angle plug-in fitting)

Material properties



Fitting: mod. polyamide PA 6 mod. polyamide PA 6

Thermal properties



Temperature / temperature range

-40 °C - 110 °C / short term: 140 °C

Protection class



Protection class

IP54

IP65 with sealing ring DR-NBR

Fire properties



Fire classification

acc. to UL94: V0 self-extinguishing



Fire properties as per EN 45545-2

C.I.T. R22 / R23 HL3 :0,58 NF X70-100-1/-2 600°C (1112 °F)

LOI R22 / R23 HL3 :≥ 32 % ISO 4589-2

Ds (max.) R22 / R23 HL3 :57 ISO 5659-2 (25 KW/m²)



Fire properties as per NFPA

ASTM E 162

ASTM E 1354

ASTM E 662

Boeing BSS 7239

Boeing BSS 7242

Bombardier SMP 800-C

Chemical resistances



Resistant to:

Alcohol

Greases

Fuels

Mineral oils

Technical information



Halogen-free

Conformity



RoHS (EC Directive 2011/65/EU)



Type WSV 90° (angle plug-in fitting)

Conformity



ECE 324 R 118

Approvals and operating permits



EU railway approval



cURus approval

Classification

ETIM 9: EC001176
ECLASS 14: 27430312
UNSPSC 26.0801: 40183103

General information



Made in Germany